

PARTS LIST

BRUSHCUTTERS

BC3500DLM
BC3500DWM
BC4500DLM
BC4500DWM

NOTE :

1. Use KOMATSU ZENOAH genuine parts as specified in the parts list for repair and/or replacement.
2. KOMATSU ZENOAH does not warrant the machines, which have been damaged by the use of any parts other than those specified by the company.
3. When placing parts orders for repair and/or replacement, check if the model name and the serial number are applicable to those specified in the parts list, then use parts number described in the parts list.
4. The contents described in the parts list are accurate as of the date and may change due to improvement.
5. The parts for the machine shall be supplied ten (10) years after the machine is discontinued. [It is possible that some specific parts may be subject to change of their delivery term and list price within the limit of ten (10) years after the machine is discontinued. It is also possible that some parts may be available even after the limit of ten (10) years.]

September 2006

APPLICABLE SERIAL NUMBERS:

BC3500DLM/DWM : DRIVE UNIT 50100000 and up	ENGINE UNIT 50100000 and up
BC4500DLM/DWM : DRIVE UNIT 200001 and up	ENGINE UNIT 100101 and up

Fig.1 CUTTER GROUP

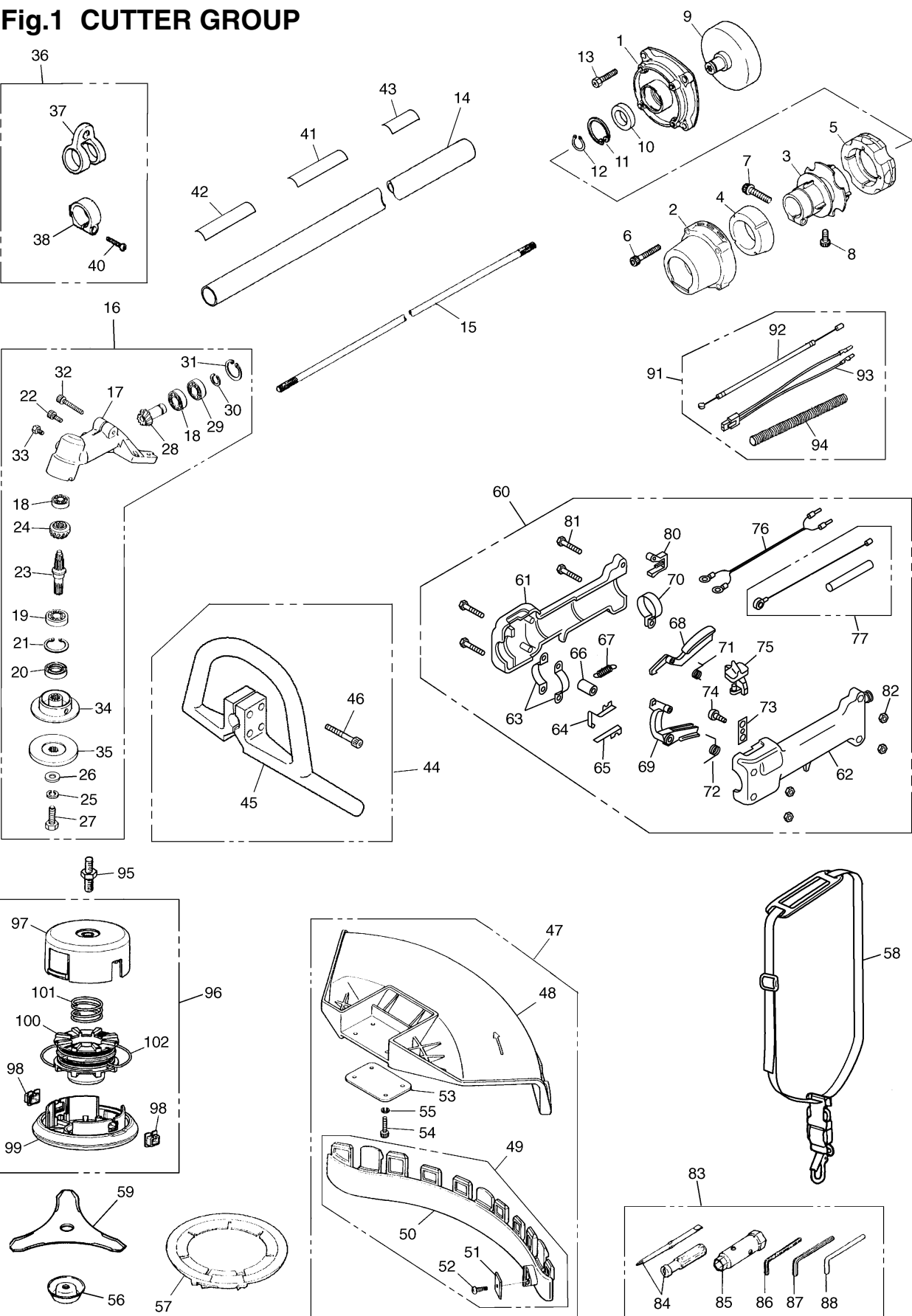


Fig.1 CUTTER GROUP

Key#	PART NUMBER	DESCRIPTION	Q'TY /UNIT	NOTE	Key#	PART NUMBER	DESCRIPTION	Q'TY /UNIT	NOTE
1	4050-11110	HOUSING	1		65	K3300-000020	• PLATE (B)	1	
2	4050-11150	CAP	1		66	K5100-000240	• COLLAR	1	
3	4050-11210	JOINT	1		67	K5100-000220	• SPRING	1	
4	4050-11250	ABSORBER-F	1		68	K2300-000260	• SAFETY LEVER	1	
5	4050-11260	ABSORBER-R	1		69	K2300-000250	• THROTTLE LEVER	1	
6	01252-30530	BOLT	4		70	K3200-000400	• CLAMP (B)	1	
7	01252-30630	BOLT	1		71	K5100-000230	• SPRING	1	
8	01252-30510	BOLT	1		72	K5100-000210	• SPRING	1	
9	848B7151A1	DRUM	1		73	K2300-000270	• PLATE	1	
10	T3149-11350	BEARING	1		74	B1122-C2910H	• SCREW	1	
11	04065-03515	RING	1		75	K2300-000280	• SWITCH	1	
12	04064-01510	RING	1		76	K5200-000090	• CORD	1	
13	3544-11510	BOLT	4		77	K5100-000270	• CABLE COMP.	1	
14	848B725821	PIPE COMP.	1	ø26x1500	80	K2300-000390	• LID	1	
15	3520-12213	SHAFT, spline ø7x7teeth	1	ø7x1536	81	B1176-090530	• SCREW	4	
16	6522-13000	GEARCASE ASSY	1		82	B1181-04054506	• NUT	4	
17	6522-13110	• GEARCASE	1		83	T3113-91000	TOOL KIT	1	
18	06000-06000	• BEARING	2		84	1030-91340	• DRIVER	1	
19	06000-06202	• BEARING	1		85	3144-91160	• SOCKET	1	
20	3130-13141	• SEAL	1		86	T3147-91510	• WRENCH	1	
21	04065-03515	• RING, SNAP	1		87	T3113-91520	• WRENCH	1	
22	01252-30510	• BOLT	1		88	3540-91110	• BAR	1	
23	3540-13212	• SHAFT, gear	1		91	T1013-83000	CABLE ASSY	1	
24	3540-13220	• GEAR	1		92	T1013-83100	• CABLE	1	
25	3544-13280	• WASHER	1		93	2247-73200	• CORD	1	
26	01643-31032	• WASHER	1		94	2319-73310	• TUBE	1	
27	3540-13290	• BOLT	1	M10(L)	95	6041-99230	SHAFT-M10	1	
28	6522-13310	• PINION	1		96	T3189-15102	TAP HEAD COMP.	1	
29	06001-06000	• BEARING	1		97	T3189-15112	• CASE	1	
30	3180-13330	• RING	1		98	T3189-15191	• EYELET	2	
31	04065-02612	• RING	1		99	T3189-15132	• COVER	1	
32	3540-13260	• BOLT	1		100	T3189-15142	• CORD HOLDER	1	
33	0224-40610	• BOLT	1		101	T3189-15160	• SPRING	1	
34	6251-13240	• HOLDER(A)	1		102	T3189-15180	• CORD	1	
35	3540-13251	• HOLDER(B)	1						
36	9366-17101	HANGER ASSY	1						
37	9366-17110	• HANGER	1						
38	9366-17120	• CLAMP	1						
40	0263-90525	• SCREW	1						
41	T3149-12510	PLATE, name	1						
42	T3149-12590	PLATE, number	1						
43	6425-12552	PLATE, caution	1						
44	T3112-14000	HANDLE ASSY	1						
45	T3112-14110	• HANDLE	1						
46	0263-90530	• SCREW	4						
47	6489-24000	GUARD ASSY	1						
48	6489-24110	• GUARD	1						
49	6489-24200	• PLATE COMP.	1						
50	6489-24210	• PLATE	1						
51	6489-24220	• BLADE	1						
52	0277-10412	• SCREW	1						
53	6489-24120	• PLATE	1						
54	01252-30516	• BOLT	4						
55	01601-20513	• WASHER	4						
56	3540-13283	COVER	1						
57	6251-15910	COVER	1						
58	T3300-17100	STRAP ASSY	1						
59	6298-E3390	SAW	1						
60	T3112-18000	GRIP ASSY	1						
61	K2300-000240	• GRIP (R)	1						
62	K2300-000230	• GRIP (L)	1						
63	K3200-000390	• CLAMP (A)	1						
64	K3300-000010	• PLATE (A)	1						

Fig.2 CUTTER GROUP

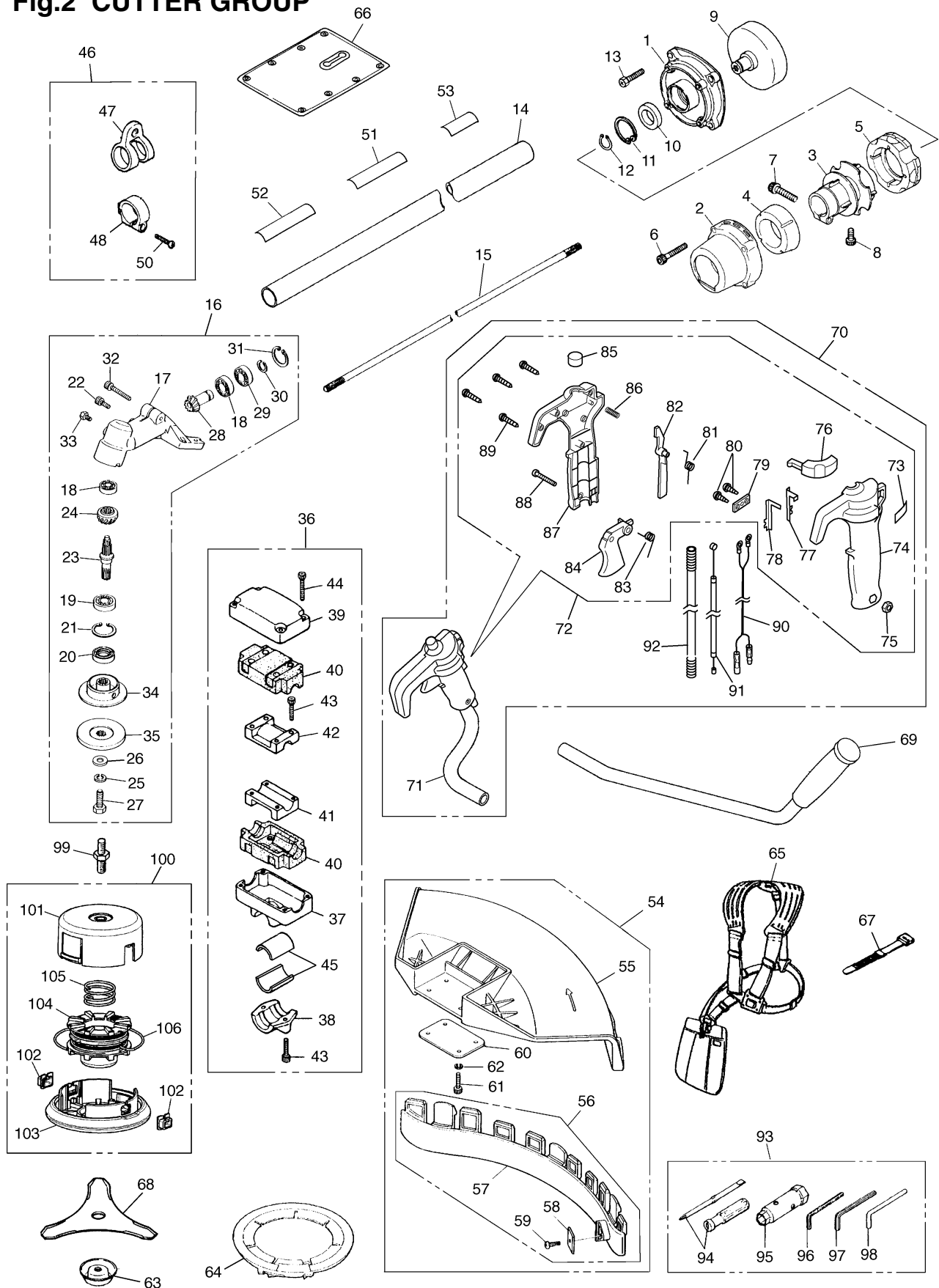


Fig.2 CUTTER GROUP

Key#	PART NUMBER	DESCRIPTION	Q'TY /UNIT	NOTE	Key#	PART NUMBER	DESCRIPTION	Q'TY /UNIT	NOTE
1	4050-11110	HOUSING	1		65	6220-17202	HARNESS ASSY	1	
2	4050-11150	CAP	1		66	4050-17110	PROTECTOR	1	
3	4050-11210	JOINT	1		67	3540-93120	BAND	1	
4	4050-11250	ABSORBER-F	1		68	6298-E3390	SAW	1	
5	4050-11260	ABSORBER-R	1		69	T3111-14300	HANDLE-L COMP.	1	
6	01252-30530	BOLT	4		70	T3113-14100	HANDLE-R COMP.	1	
7	01252-30630	BOLT	1		71	T3111-14110	• HANDLE-R	1	
8	01252-30510	BOLT	1		72	K6010-000550	• GRIP&LEV, COMP.	1	
9	848B7151A1	DRUM	1		73	K2200-000040	•• LABEL	1	
10	T3149-11350	BEARING	1		74	K2300-000050	•• GRIP (L)	1	
11	04065-03515	RING	1		75	B1181-040545	•• NUT	1	
12	04064-01510	RING	1		76	K2300-000080	•• SWITCH	1	
13	3544-11510	BOLT	4		77	K5100-000030	•• SPRING	1	
14	848B725821	PIPE COMP.	1	ø26x1500	78	K5100-000040	•• SPRING	1	
15	3520-12213	SHAFT, spline ø7x7teeth	1	ø7x1536	79	K2300-000090	•• HOLDER	1	
16	6522-13000	GEARCASE ASSY	1		80	B1122-C2910H	•• SCREW, M3x10	2	Tapping
17	6522-13110	• GEARCASE	1		81	K5100-000020	•• SPRING	1	
18	06000-06000	• BEARING	2		82	K2300-000070	•• LEVER	1	
19	06000-06202	• BEARING	1		83	K5100-000010	•• SPRING	1	
20	3130-13141	• SEAL	1		84	K2300-000060	•• LEVER	1	
21	04065-03515	• RING, SNAP	1		85	K1300-000060	•• PLUG	1	
22	01252-30510	• BOLT	1		86	K5100-000050	•• SPRING	1	
23	3540-13212	• SHAFT	1		87	K2300-000040	•• GRIP (R)	1	
24	3540-13220	• GEAR	1		88	B1111-A0530H	•• SCREW, M5x30	1	
25	3544-13280	• WASHER	1		89	B1122-C4220H	•• SCREW, M4x20	5	Tapping
26	01643-31032	• WASHER	1		90	K5200-000070	• CORD	1	
27	3540-13290	• BOLT	1	M10(L)	91	K5100-000130	• CABLE	1	
28	6522-13310	• PINION	1		92	K5200-000080	• TUBE	1	
29	06001-06000	• BEARING	1		93	T3113-91000	TOOL KIT	1	
30	3180-13330	• RING	1		94	1030-91340	• DRIVER	1	
31	04065-02612	• RING	1		95	3144-91160	• SOCKET	1	
32	3540-13260	• BOLT	1		96	09007-00425	• WRENCH	1	
33	0224-40610	• BOLT	1		97	09007-00528	• WRENCH	1	
34	6251-13240	• HOLDER(A)	1		98	3540-91110	• BAR	1	
35	3540-13251	• HOLDER(B)	1		99	6041-99230	SHAFT-M10	1	
36	3530-14900	BRACKET ASSY	1		100	T3189-15102	TAP HEAD COMP.	1	
37	3540-14910	• BRACKET	1		101	T3189-15112	• CASE	1	
38	3540-14920	• CAP-L	1		102	T3189-15191	• EYELET	2	
39	3540-14930	• CAP-U	1		103	T3189-15132	• COVER	1	
40	3540-14140	• ABSORBER	2		104	T3189-15142	• CORD HOLDER	1	
41	3540-14150	• CLAMP	1		105	T3189-15160	• SPRING	1	
42	3540-14160	• CLAMP	1		106	T3189-15180	• CORD	1	
43	01252-30525	• BOLT	6						
44	01252-30530	• BOLT	4						
45	3530-14171	• SPACER	2						
46	9366-17101	HANGER ASSY	1						
47	9366-17110	• HANGER	1						
48	9366-17120	• CLAMP	1						
50	0263-90525	• SCREW	1						
51	T3150-12510	PLATE, name	1						
52	T3150-12590	PLATE, number	1						
53	6425-12552	PLATE, caution	1						
54	6489-24000	GUARD ASSY	1						
55	6489-24110	• GUARD	1						
56	6489-24200	• PLATE COMP.	1						
57	6489-24210	•• PLATE	1						
58	6489-24220	•• BLADE	1						
59	0277-10412	•• SCREW	1						
60	6489-24120	• PLATE	1						
61	01252-30516	• BOLT	4						
62	01601-20513	• WASHER	4						
63	3540-13283	COVER	1						
64	6251-15910	COVER	1						

Fig.3 ENGINE GROUP

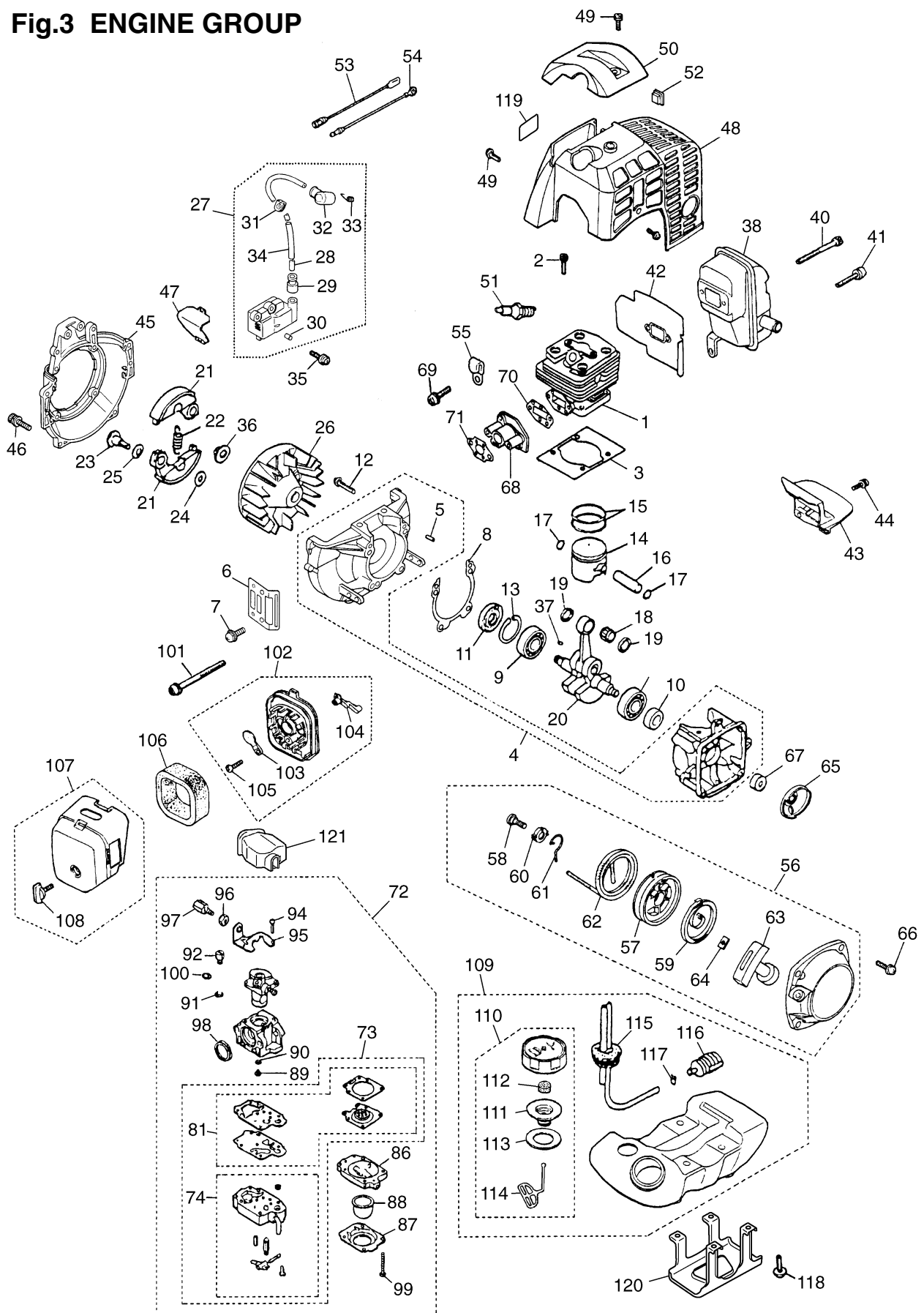


Fig.3 ENGINE GROUP

Key#	PART NUMBER	DESCRIPTION	Q'TY /UNIT	NOTE	Key#	PART NUMBER	DESCRIPTION	Q'TY /UNIT	NOTE
1	T1151-12110	CYLINDER	1		66	4500-75511	SCREW	4	
2	1850-12130	BOLT	4		67	4700-75310	COLLAR	1	
3	4500-13120	GASKET, base	1		68	4500-13161	INSULATOR	1	
4	4500-21101	CRANKCASE COMP.	1		69	4500-13181	SCREW	2	
5	2629-21130	• PIN	3		70	4500-13150	GASKET, insulator	1	
6	4500-22110	GUARD	1		71	4500-13130	GASKET, carburetor	1	
7	0263-90514	SCREW	1		72	T1196-81000	CARB ASS'Y WYJ-319	1	
8	4500-21140	GASKET, case	1		73	T1196-06030	• REBUILT KIT	1	
9	06030-06201	BEARING	2		74	1850-81450	•• BODY ASS'Y	1	
10	4810-21210	OIL SEAL	1						
11	1650-21220	OIL SEAL	1		81	T1196-06020	•• GASKET KIT	1	
12	01252-30530	BOLT	4						
13	04065-03212	SNAP RING	1		86	1850-81490	• BODY, purge	1	
14	4700-41110	PISTON	1		87	1850-81520	• COVER, pump	1	
15	1650-41210	RING	2		88	1751-81510	• PUMP, priming	1	
16	1030-41310	PIN	1		89	T1108-81910	• JET #43.5	1	
17	1300-41320	RING	2		90	1751-81240	• O-RING	1	
18	T2100-41410	BEARING	1		91	1751-81130	• RING	1	
19	2850-41510	WASHER	2		92	1881-81140	• SWIVEL	1	
20	4500-42000	CRANKSHAFT COMP.	1						
21	1400-51111	SHOE, clutch	2		94	1752-81110	• SCREW	2	
22	1651-51220	SPRING	1		95	5500-81120	• BRACKET	1	
23	1200-51211	SCREW	2		96	1751-81180	• NUT, adjuster	1	
24	1200-51230	WASHER	2		97	5730-81170	• SCREW, adjuster	1	
25	1200-51241	WASHER	2		98	1881-81130	• RING	1	
26	T1153-71110	ROTOR	1		99	1850-81530	• SCREW	4	
27	T1153-71200	COIL ASS'Y	1		100	5500-81160	• WASHER	1	
28	4500-71220	• CORD	1		101	0263-90550	SCREW	2	
29	2616-71320	• CAP	1		102	T1184-82101	BODY ASS'Y	1	
30	T1153-71250	• PIN	2		103	T1184-82130	• PLATE, choke	1	
31	5500-72130	• GROMMET	1		104	4500-82140	• LEVER, choke	1	
32	5500-72110	• CAP, plug	1		105	2630-33610	• SCREW	1	
33	5500-72120	• SPRING	1		106	4500-82170	ELEMENT	1	
34	T1512-71320	• TUBE	1		107	4500-82202	COVER ASS'Y	1	
35	3350-14150	BOLT	2		108	5500-82221	• KNOB	1	
36	1650-43230	NUT	1		109	T1013-85002	TANK ASS'Y	1	
37	1000-43240	KEY	1		110	T1015-85202	• CAP ASS'Y	1	
38	4700-15110	MUFFLER ASS'Y	1		111	4500-85300	•• HOLDER ASS'Y	1	
					112	5601-85260	•• FILTER	1	
40	01252-30560	BOLT	2		113	4500-85220	•• PACKING	1	
41	3310-31720	BOLT	1		114	4820-85260	•• STOPPER	1	
42	4700-15211	GASKET	1		115	5500-85300	• PIPE COMP.	1	
43	4500-15221	PLATE	1		116	3302-85400	• FILTER ASS'Y	1	
44	0263-90514	SCREW	1		117	1260-85460	• CLIP	1	
45	T1117-31111	COVER	1		118	0263-90525	SCREW	4	
46	3310-12281	BOLT	4		119	T1716-31120	LABEL, cover	1	
47	4500-31210	PLATE	1		120	T1184-31911	GUARD	1	
48	4500-32110	COVER	1		121	4500-81910	COVER	1	
49	4500-32120	SCREW	4						
50	4500-32210	GUARD	1						
51	3699-90332	SPARKPLUG BPMR7A	1						
52	1852-72121	GROMMET	1						
53	T1153-71240	CORD	1						
54	T1006-73230	CORD, earth	1						
55	8488K40010	CLAMP	1						
56	4500-75100	RECOIL ASS'Y	1						
57	4500-75120	• REEL	1						
58	4500-75150	• SCREW	1						
59	1850-75130	• SPRING, spiral	1						
60	4500-75180	• COLLAR	1						
61	4500-75190	• ARM	1						
62	4500-75160	• ROPE	1						
63	1140-75320	• KNOB	1						
64	5500-75170	• PLATE, stopper	1						
65	4500-75210	PULLEY	1						

Fig.4 CUTTER GROUP

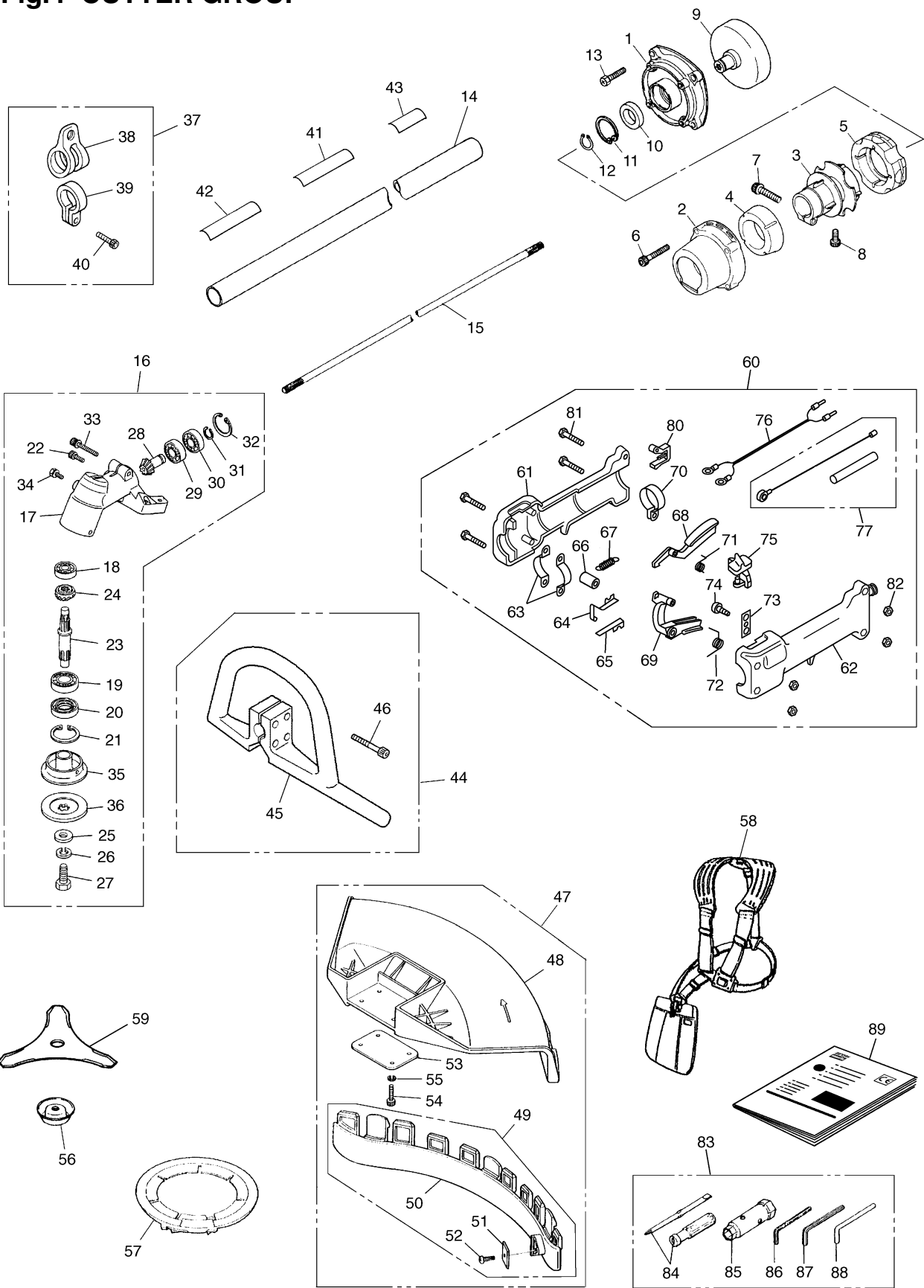


Fig.4 CUTTER GROUP

Key#	PART NUMBER	DESCRIPTION	Q'TY /UNIT	NOTE	Key#	PART NUMBER	DESCRIPTION	Q'TY /UNIT	NOTE
1	4050-11110	HOUSING	1		65	K3300-000020	• PLATE (B)	1	
2	4050-11150	CAP	1		66	K5100-000240	• COLLAR	1	
3	T3042-11210	JOINT	1		67	K5100-000220	• SPRING	1	
4	4050-11250	ABSORBER-F	1		68	K2300-000260	• SAFETY LEVER	1	
5	4050-11260	ABSORBER-R	1		69	K2300-000250	• THROTTLE LEVER	1	
6	01252-30530	BOLT	4		70	K3200-000360	• CLAMP (B)	1	
7	01252-30630	BOLT	1		71	K5100-000230	• SPRING	1	
8	01252-30510	BOLT	1		72	K5100-000210	• SPRING	1	
9	4050-11311	DRUM	1		73	K2300-000270	• PLATE	1	
10	T3149-11350	BEARING	1		74	B1122-C2910H	• SCREW	1	
11	04065-03515	RING	1		75	K2300-000280	• SWITCH	1	
12	04064-01510	RING	1		76	K5200-000090	• CORD	1	
13	3544-11510	BOLT	4		77	K5100-000270	• CABLE COMP.	1	
14	T3151-12100	PIPE COMP.	1	ø28x1500	80	K2300-000390	• LID	1	
15	6340-12211	SHAFT	1	ø8x1540	81	B1176-090530	• SCREW	4	
16	6562-13000	GEARCASE ASSY	1		82	B1181-04054506	• NUT	4	
17	6562-13110	• GEARCASE	1		83	T3113-91000	TOOL KIT	1	
18	06000-06000	• BEARING	1		84	1030-91340	• DRIVER	1	
19	06000-06202	• BEARING	1		85	3144-91160	• SOCKET	1	
20	3130-13141	• SEAL	1		86	T3147-91510	• WRENCH	1	
21	04065-03515	• RING	1		87	T3113-91520	• WRENCH	1	
22	01252-30510	• BOLT	1		88	3540-91110	• BAR	1	
23	3540-13212	• SHAFT, gear	1		89	T3149-93110	MANUAL	1	
24	3540-13220	• GEAR	1						
25	01643-31032	• WASHER	1						
26	3544-13280	• WASHER	1						
27	3540-13290	• BOLT	1	M10(L)					
28	3540-13311	• PINION	1						
29	06000-06001	• BEARING	1						
30	06001-06001	• BEARING	1						
31	3130-13270	• RING	1						
32	04065-02812	• RING	1						
33	3540-13260	• BOLT	1						
34	0224-40610	• BOLT	1						
35	6251-13240	• HOLDER(A)	1						
36	3540-13251	• HOLDER(B)	1						
37	T3042-17100	HANGER ASSY	1						
38	6520-17110	• HANGER	1						
39	6520-17120	• CLAMP	1						
40	0263-90525	• SCREW	1						
41	T3151-12510	PLATE, name	1						
42	T3151-12590	PLATE, number	1						
43	6425-12552	PLATE, caution	1						
44	T3114-14000	HANDLE ASSY	1						
45	T3114-14110	• HANDLE	1						
46	0263-90530	• SCREW	4						
47	6489-24000	GUARD ASSY	1						
48	6489-24110	• GUARD	1						
49	6489-24200	• PLATE COMP.	1						
50	6489-24210	• PLATE	1						
51	6489-24220	• BLADE	1						
52	0277-10412	• SCREW	1						
53	6489-24120	• PLATE	1						
54	01252-30516	• BOLT	4						
55	01601-20513	• WASHER	4						
56	3540-13283	COVER	1						
57	6251-15910	COVER	1						
58	T3163-17200	HARNESS ASSY	1						
59	6298-E3390	SAW	1						
60	T3114-18000	GRIP ASSY	1						
61	K2300-000240	• GRIP (R)	1						
62	K2300-000230	• GRIP (L)	1						
63	K3200-000350	• CLAMP (A)	1						
64	K3300-000010	• PLATE (A)	1						

Fig.5 CUTTER GROUP

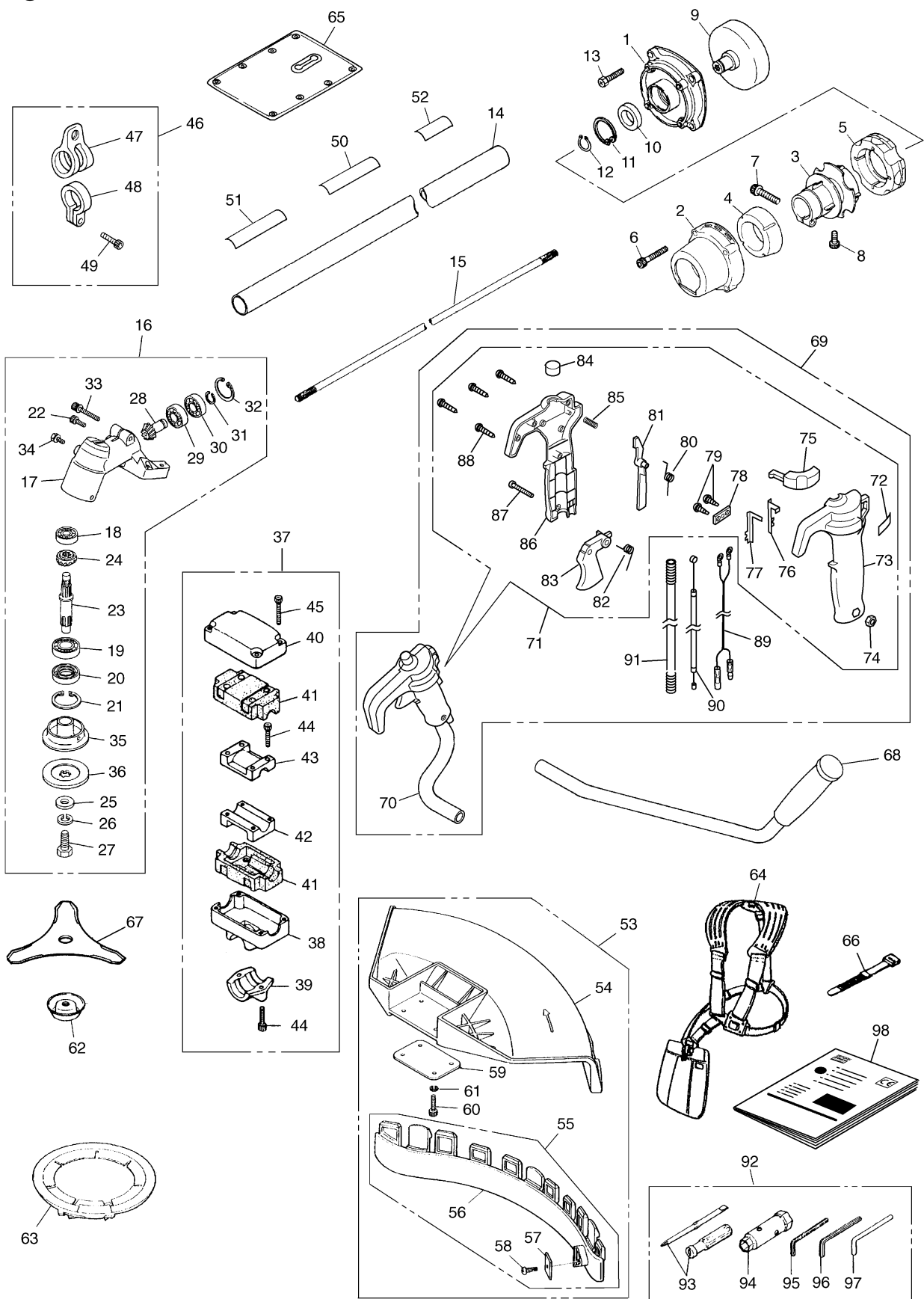


Fig.5 CUTTER GROUP

Key#	PART NUMBER	DESCRIPTION	Q'TY /UNIT	NOTE	Key#	PART NUMBER	DESCRIPTION	Q'TY /UNIT	NOTE
1	4050-11110	HOUSING	1		65	4050-17110	PROTECTOR	1	
2	4050-11150	CAP	1		66	3540-93120	BAND	1	
3	T3042-11210	JOINT	1		67	6298-E3390	SAW	1	
4	4050-11250	ABSORBER-F	1		68	T3111-14300	HANDLE-L COMP.	1	
5	4050-11260	ABSORBER-R	1		69	T3113-14100	HANDLE-R COMP.	1	
6	01252-30530	BOLT	4		70	T3111-14110	• HANDLE-R	1	
7	01252-30630	BOLT	1		71	K6010-000550	• GRIP&LEV, COMP.	1	
8	01252-30510	BOLT	1		72	K2200-000040	•• LABEL	1	
9	4050-11311	DRUM	1		73	K2300-000050	•• GRIP (L)	1	
10	T3149-11350	BEARING	1		74	B1181-040545	•• NUT	1	
11	04065-03515	RING	1		75	K2300-000080	•• SWITCH	1	
12	04064-01510	RING	1		76	K5100-000030	•• SPRING	1	
13	3544-11510	BOLT	4		77	K5100-000040	•• SPRING	1	
14	T3151-12100	PIPE COMP.	1	ø28x1500	78	K2300-000090	•• HOLDER	1	
15	6340-12211	SHAFT	1	ø8x1540	79	B1122-C2910H	•• SCREW, M3x10	2	Tapping
16	6562-13000	GEARCASE ASSY	1		80	K5100-000020	•• SPRING	1	
17	6562-13110	• GEARCASE	1		81	K2300-000070	•• LEVER	1	
18	06000-06000	• BEARING	1		82	K5100-000010	•• SPRING	1	
19	06000-06202	• BEARING	1		83	K2300-000060	•• LEVER	1	
20	3130-13141	• SEAL	1		84	K1300-000060	•• PLUG	1	
21	04065-03515	• RING	1		85	K5100-000050	•• SPRING	1	
22	01252-30510	• BOLT	1		86	K2300-000040	•• GRIP (R)	1	
23	3540-13212	• SHAFT, gear	1		87	B1111-A0530H	•• SCREW, M5x30	1	
24	3540-13220	• GEAR	1		88	B1122-C4220H	•• SCREW, M4x20	5	Tapping
25	01643-31032	• WASHER	1		89	K5200-000070	• CORD	1	
26	3544-13280	• WASHER	1		90	K5100-000130	• CABLE	1	
27	3540-13290	• BOLT	1	M10(L)	91	K5200-000080	• TUBE	1	
28	3540-13311	• PINION	1		92	T3113-91000	TOOL KIT	1	
29	06000-06001	• BEARING	1		93	1030-91340	• DRIVER	1	
30	06001-06001	• BEARING	1		94	3144-91160	• SOCKET	1	
31	3130-13270	• RING	1		95	09007-00425	• WRENCH	1	
32	04065-02812	• RING	1		96	09007-00528	• WRENCH	1	
33	3540-13260	• BOLT	1		97	3540-91110	• BAR	1	
34	0224-40610	• BOLT	1		98	T3149-93110	MANUAL	1	
35	6251-13240	• HOLDER(A)	1						
36	3540-13251	• HOLDER(B)	1						
37	3540-14900	BRACKET ASSY	1						
38	3540-14910	• BRACKET	1						
39	3540-14920	• CAP-L	1						
40	3540-14930	• CAP-U	1						
41	3540-14140	• ABSORBER	2						
42	3540-14150	• CLAMP-A	1						
43	3540-14160	• CLAMP-B	1						
44	01252-30525	• BOLT	6						
45	01252-30530	• BOLT	4						
46	T3042-17100	HANGER ASSY	1						
47	6520-17110	• HANGER	1						
48	6520-17120	• CLAMP	1						
49	0263-90525	• SCREW	1						
50	T3152-12510	PLATE, name	1						
51	T3152-12590	PLATE, number	1						
52	6425-12552	PLATE, caution	1						
53	6489-24000	GUARD ASSY	1						
54	6489-24110	• GUARD	1						
55	6489-24200	• PLATE COMP.	1						
56	6489-24210	•• PLATE	1						
57	6489-24220	•• BLADE	1						
58	0277-10412	•• SCREW	1						
59	6489-24120	• PLATE	1						
60	01252-30516	• BOLT	4						
61	01601-20513	• WASHER	4						
62	3540-13283	COVER	1						
63	6251-15910	COVER	1						
64	T3163-17200	HARNES ASSY	1						

Fig.6 ENGINE GROUP

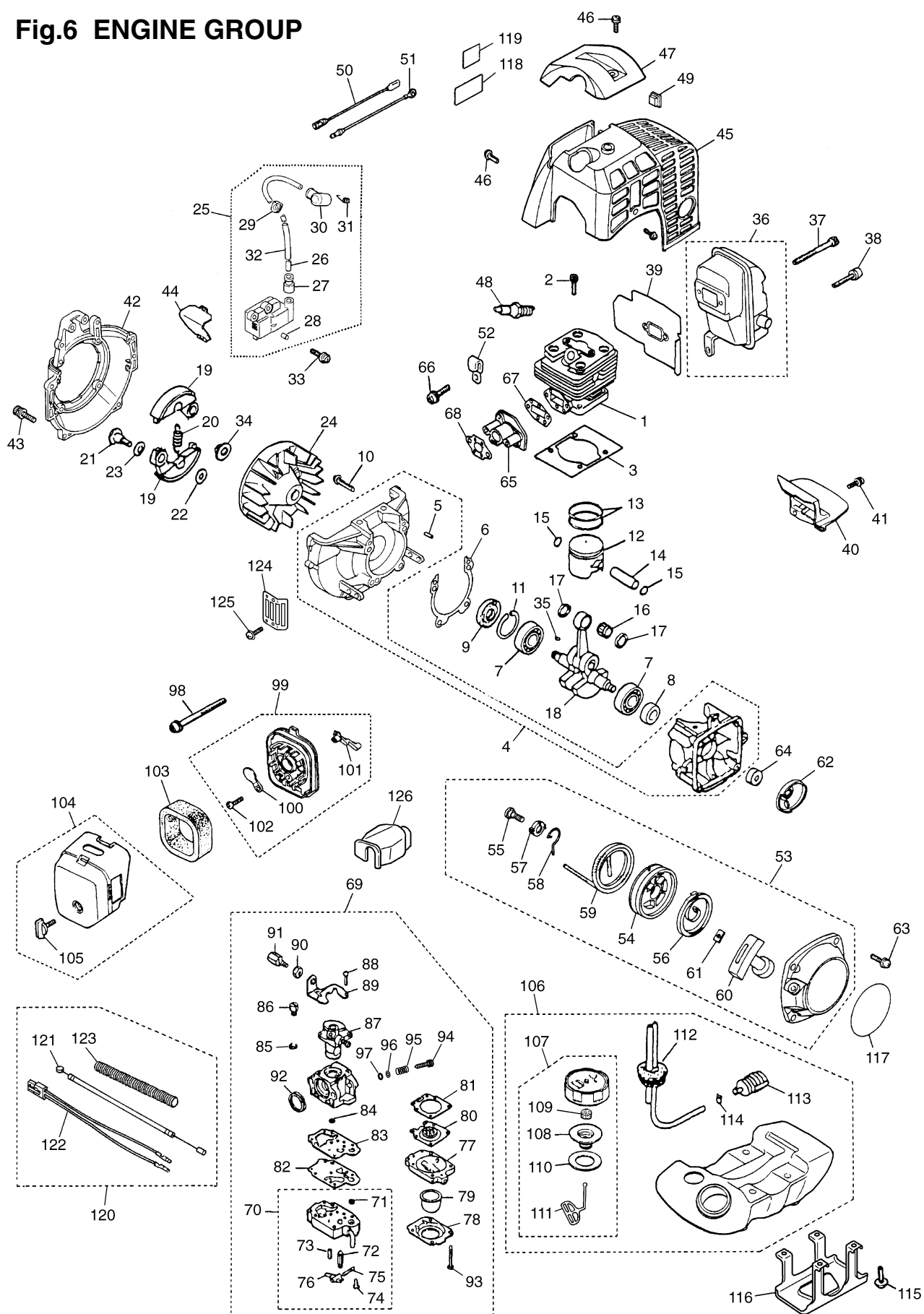


Fig.6 ENGINE GROUP

Key#	PART NUMBER	DESCRIPTION	Q'TY /UNIT	NOTE	Key#	PART NUMBER	DESCRIPTION	Q'TY /UNIT	NOTE
1	4500-12110	CYLINDER	1		66	4500-13181	SCREW	2	M5x20
2	1850-12130	BOLT	4	M5x20	67	4500-13150	GASKET, insulator	1	
3	4500-13120	GASKET, base	1		68	4500-13130	GASKET, carburetor	1	
4	4500-21101	CRANKCASE COMP.	1		69	4500-81001	CARBURETOR ASSY	1	WYK-93
5	2629-21130	• PIN	3		70	1850-81450	• BODY ASSY	1	
6	4500-21140	GASKET, case	1		71	3306-81380	•• SCREEN	1	
7	06030-06201	BEARING	2		72	3356-81310	•• VALVE	1	
8	4810-21210	OIL SEAL	1		73	1850-81270	•• SPRING	1	
9	1650-21220	OIL SEAL	1		74	1850-81220	•• SCREW	1	
10	01252-30530	BOLT	4	M5x30	75	3310-81250	•• PIN	1	
11	04065-03212	SNAP RING	1		76	3310-81230	•• LEVER	1	
12	4500-41110	PISTON	1		77	1850-81490	• BODY, purge	1	
13	1400-41220	RING	2		78	1850-81520	• COVER, pump	1	
14	2850-41310	PIN	1		79	1751-81510	• PUMP, priming	1	
15	1300-41320	RING	2		80	3310-81260	• DIAPHRAGM	1	
16	T2100-41410	BEARING	1		81	1850-81470	• GASKET, diaphragm	1	
17	2850-41510	WASHER	2		82	1065-81420	• DIAPHRAGM, pump	1	
18	4500-42000	CRANKSHAFT COMP.	1		83	1065-81410	• GASKET, pump	1	
19	4500-51111	SHOE, clutch	2		84	5500-81160	• WASHER	1	
20	4500-51220	SPRING	1		85	1751-81130	• RING	1	
21	1200-51211	SCREW	2		86	1881-81140	• SWIVEL	1	
22	1200-51230	WASHER	2		87	4500-81150	• VALVE ASSY	1	
23	1200-51241	WASHER	2		88	1752-81110	• SCREW	2	
24	T1153-71110	ROTOR	1		89	5500-81120	• BRACKET	1	
25	T1153-71200	COIL ASSY	1		90	1751-81180	• NUT, adjuster	1	
26	4500-71220	• CORD	1		91	5730-81170	• SCREW, adjuster	1	
27	2616-71320	• CAP	1		92	1881-81130	• RING	1	
28	T1153-71250	• PIN	2		93	1850-81530	• SCREW	4	
29	5500-72130	• GROMMET	1		94	1484-81610	• NEEDLE, high	1	
30	5500-72110	• CAP, plug	1		95	1491-81160	• SPRING	1	
31	5500-72120	• SPRING	1		96	1881-81190	• WASHER	1	
32	T1512-71320	• TUBE	1		97	1881-81240	• O-RING	1	
33	3350-14150	BOLT	2	M4x20	98	0263-90550	SCREW	2	
34	1650-43230	NUT	1		99	T1184-82101	BODY ASSY	1	
35	1000-43240	KEY	1		100	T1184-82130	• PLATE, choke	1	
36	4500-15110	MUFFLER ASSY	1		101	4500-82140	• LEVER, choke	1	
37	01252-30565	BOLT	2		102	2630-33610	• SCREW	1	
38	3310-31720	BOLT	1	M5x14	103	4500-82170	ELEMENT	1	
39	4700-15211	GASKET, muffler	1		104	4500-82202	COVER ASSY	1	
40	4500-15221	PLATE, muffler	1		105	5500-82221	• KNOB	1	
41	0263-90514	SCREW	1		106	T1015-85003	TANK ASSY	1	
42	T1117-31111	COVER	1		107	T1015-85202	• CAP ASSY	1	
43	3310-12281	BOLT	4	M5x20	108	4500-85300	•• HOLDER ASSY	1	
44	4500-31210	PLATE	1		109	5601-85260	•• FILTER	1	
45	4500-32110	COVER	1		110	4500-85220	•• PACKING	1	
46	4500-32120	SCREW	4		111	4820-85260	•• STOPPER	1	
47	4500-32210	GUARD	1		112	T1015-85300	• PIPE COMP.	1	
48	5933-73110	SPARKPLUG (Champion)	1	BPMR7A	113	3302-85400	• FILTER ASSY	1	
49	1852-72121	GROMMET	1		114	1260-85460	• CLIP	1	
50	T1153-71240	CORD	1		115	1600-86120	SCREW	4	
51	T1006-73230	CORD, earth	1		116	T1184-31911	GUARD	1	
52	1140-72231	CLAMP	1		117	T1117-75411	LABEL, recoil	1	
53	4500-75100	RECOIL ASSY	1		118	1660-31121	LABEL	1	
54	4500-75120	• REEL	1		119	2634-31420	LABEL (CE)	1	
55	4500-75150	• SCREW	1		120	T1013-83000	CABLE ASSY	1	DLM
56	1850-75130	• SPRING, spiral	1		121	T1013-83100	• CABLE	1	DLM
57	4500-75180	• COLLAR	1		122	2247-73200	• CORD	1	DLM
58	4500-75190	• ARM	1		123	2319-73310	• TUBE	1	DLM
59	4500-75160	• ROPE	1		124	4500-22110	GUARD	1	
60	1140-75320	• KNOB	1		125	0263-90514	SCREW	1	M5x4
61	5500-75170	• PLATE, stopper	1		126	4500-81910	COVER	1	
62	4500-75210	PULLEY	1						
63	4500-75511	SCREW	4						
64	4700-75310	COLLAR	1						
65	4500-13161	INSULATOR	1						



KOMATSU ZENOAHI CO.

1-9 Minamidai, Kawagoe, Saitama, 350-1192 Japan

PRINTED IN JAPAN

PRINTED ON RECYCLED PAPER
IMPRIMÉ SUR PAPIER RECYCLÉ
GEDRUCKT AUF RECYCLING PAPIER
STAMPATO SU CARTA RICICLATA
IMPRESO EN PAPEL RECICLADO