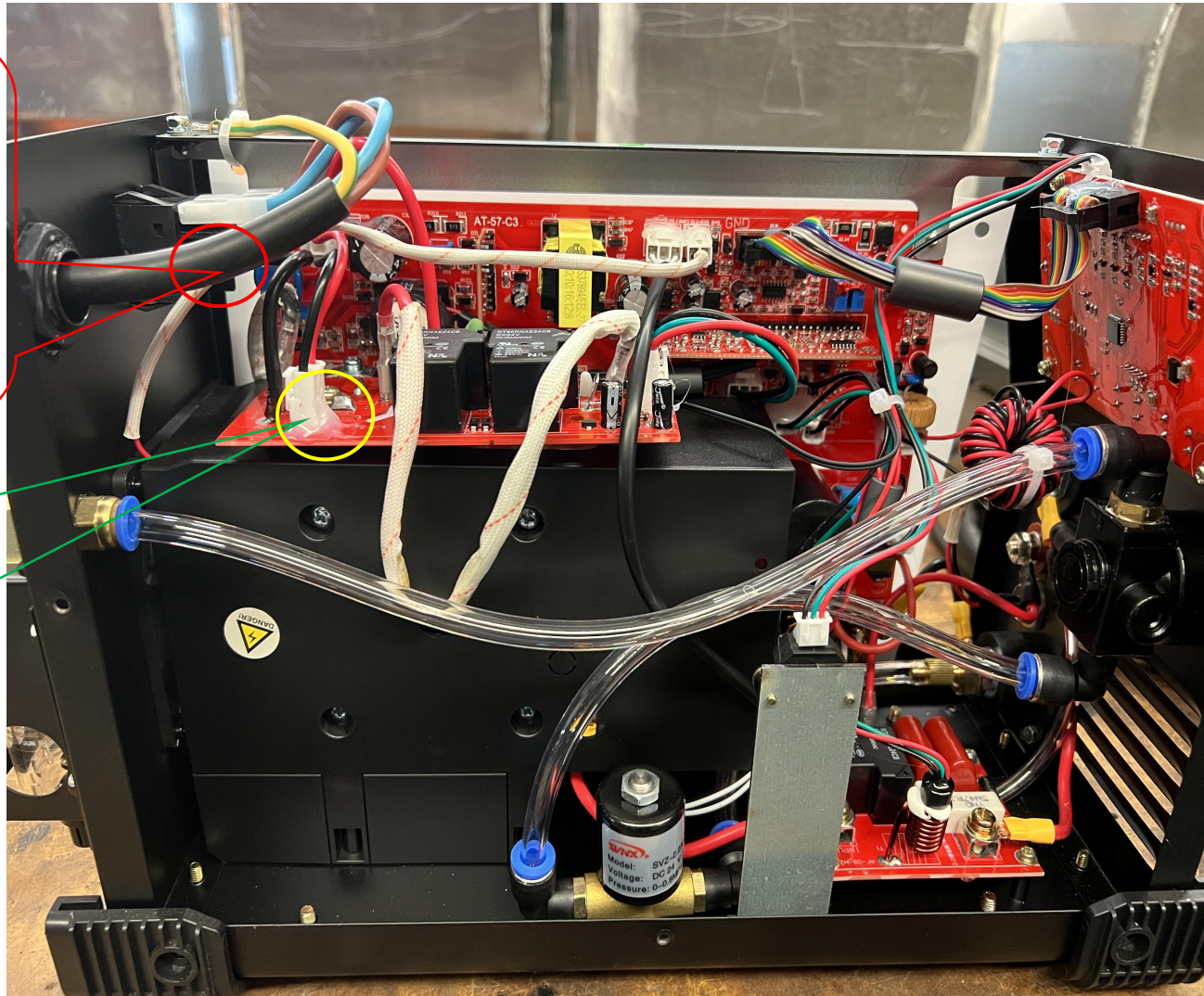
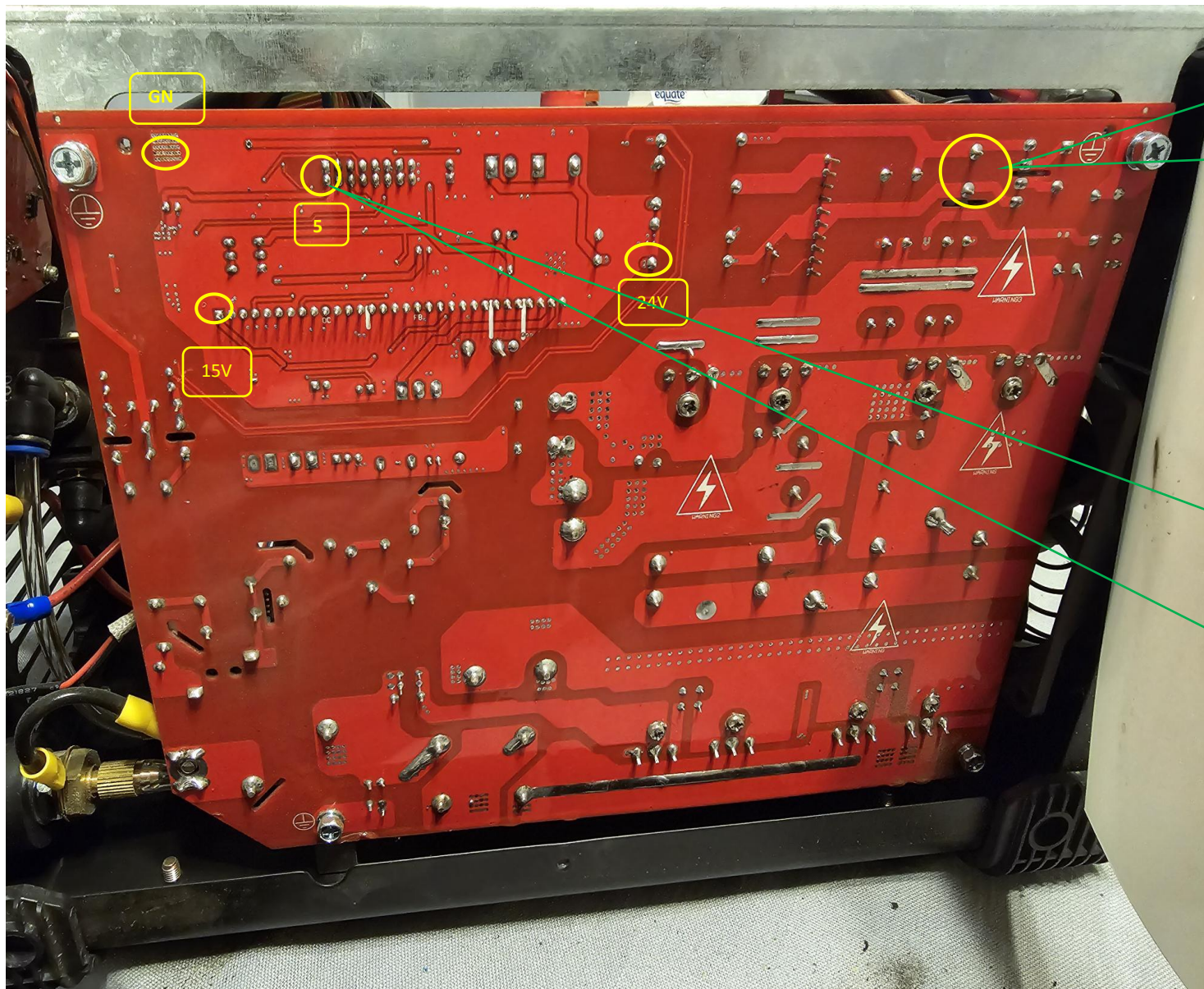


Troubleshooting BTC500DP Unable to Power On

1. Check the switch input power and use a multimeter to measure if there is AC voltage present.

2. Use a multimeter to measure if there is AC voltage at this connector.





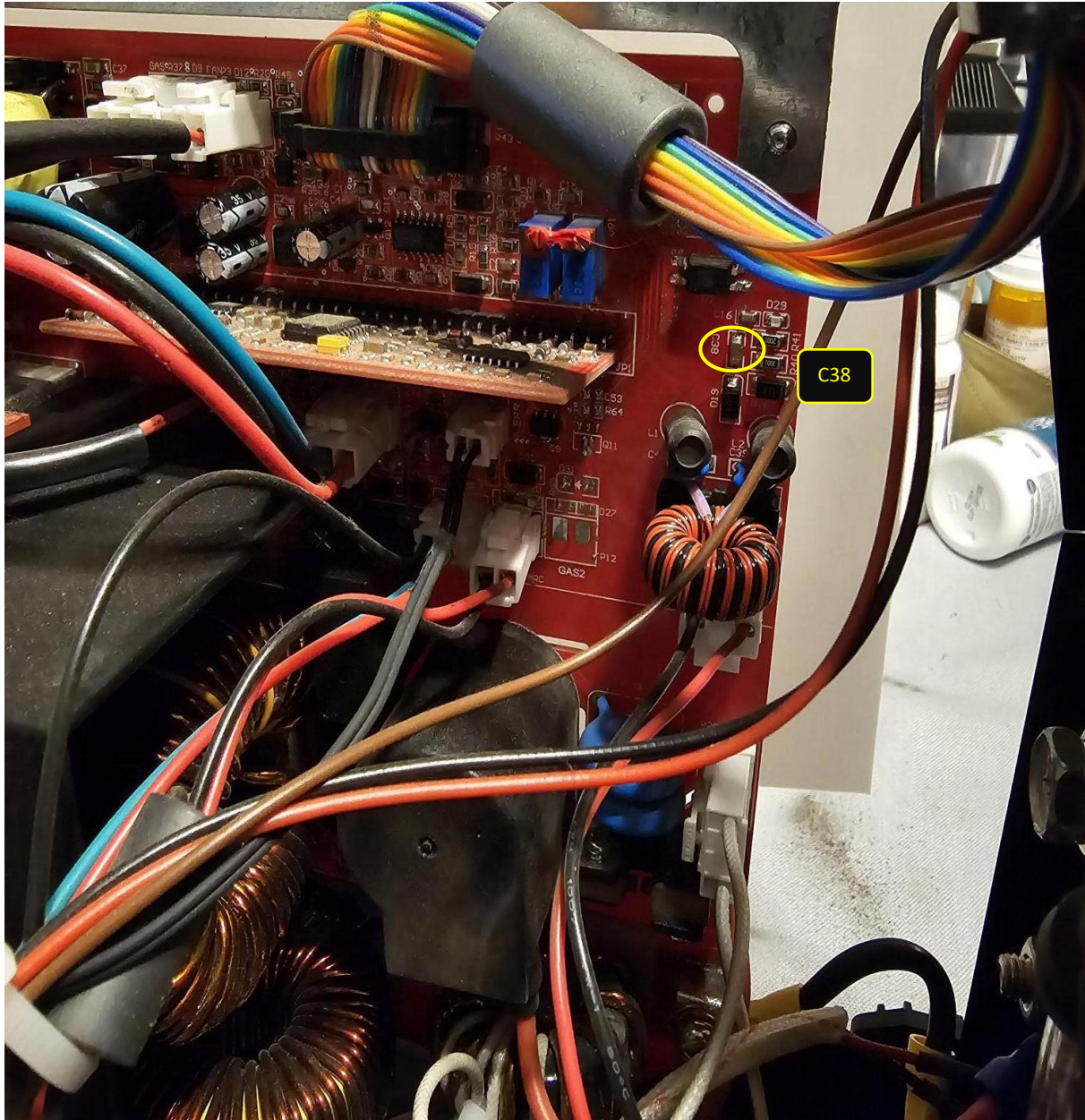
3. Use a multimeter to check for DC voltage between the two terminals of this capacitor.

4. Use the continuity or diode test function of the multimeter to check whether the 24V, 15V, and 5V points are shorted to GND.

Note: The power switch must be turned off to ensure the machine is in a non-operational state during inspection.



5. Use the continuity or diode test function of the multimeter to check for a short circuit between the two terminals of C37 and C38. If a short is found, replace both capacitors. Specifications can be 1206-10UF or substitute with other CBB or electrolytic capacitors; possible replacement models include 4.7UF-50V, 10UF-50V, 22UF-50V.



6. Use the diode setting on the multimeter to check if D21, D22, D24, and D26 are damaged, testing in both directions.

