

Trust and Reliability

FIRST

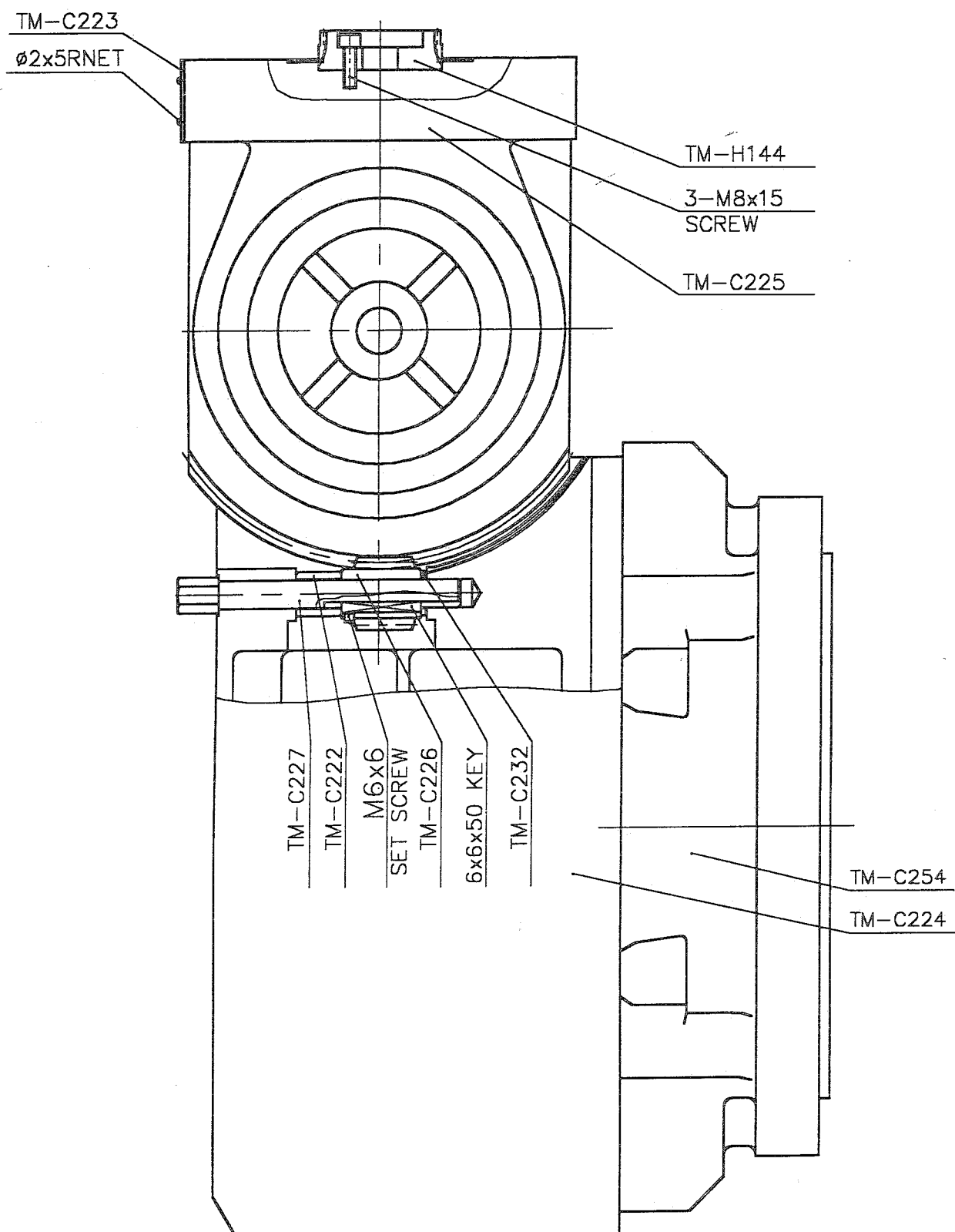
PARTS LIST.

LC-1 1/2 SERIES

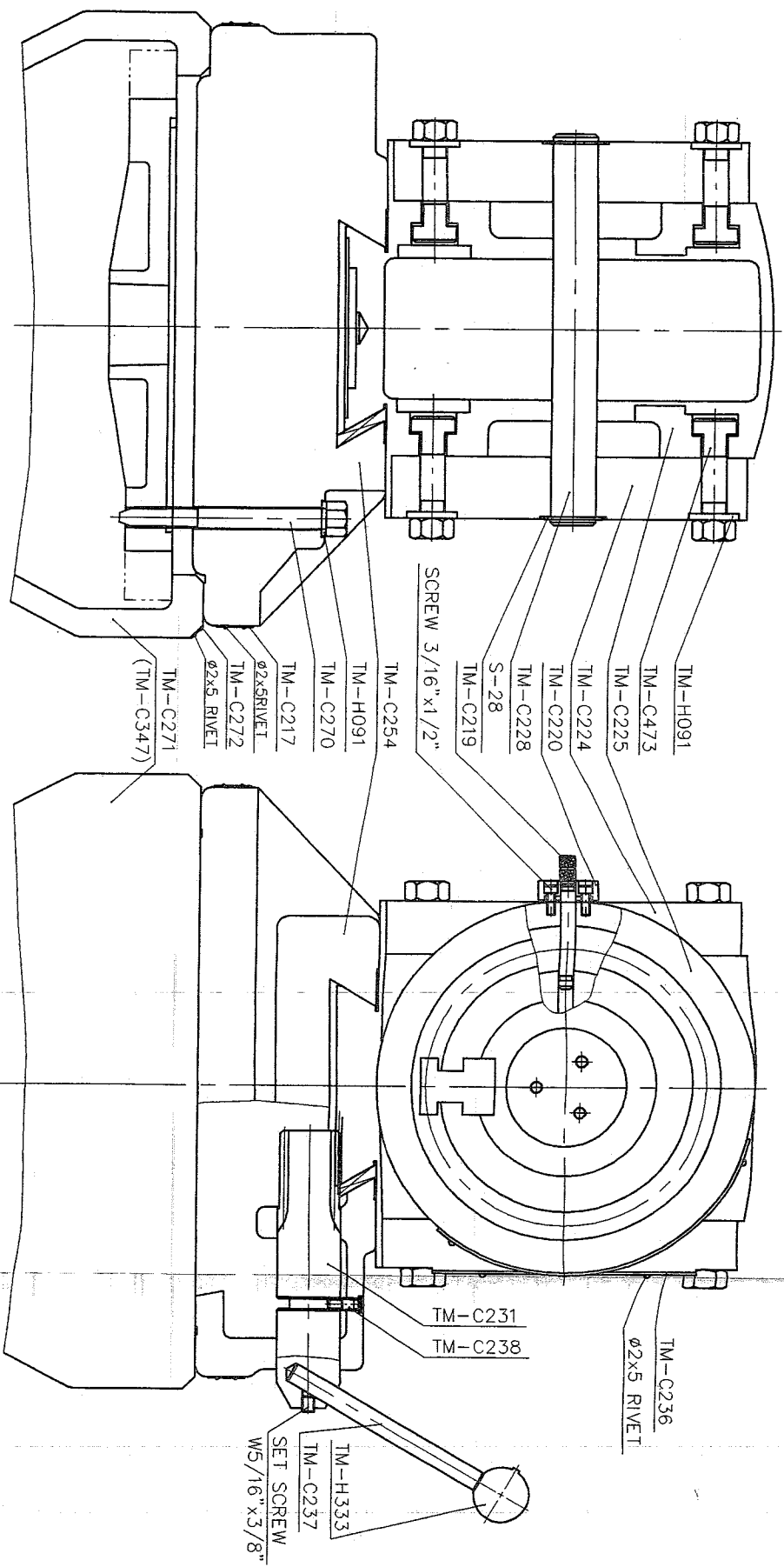
LONG CHANG MACHINERY CO., LTD.

2150-7711-100

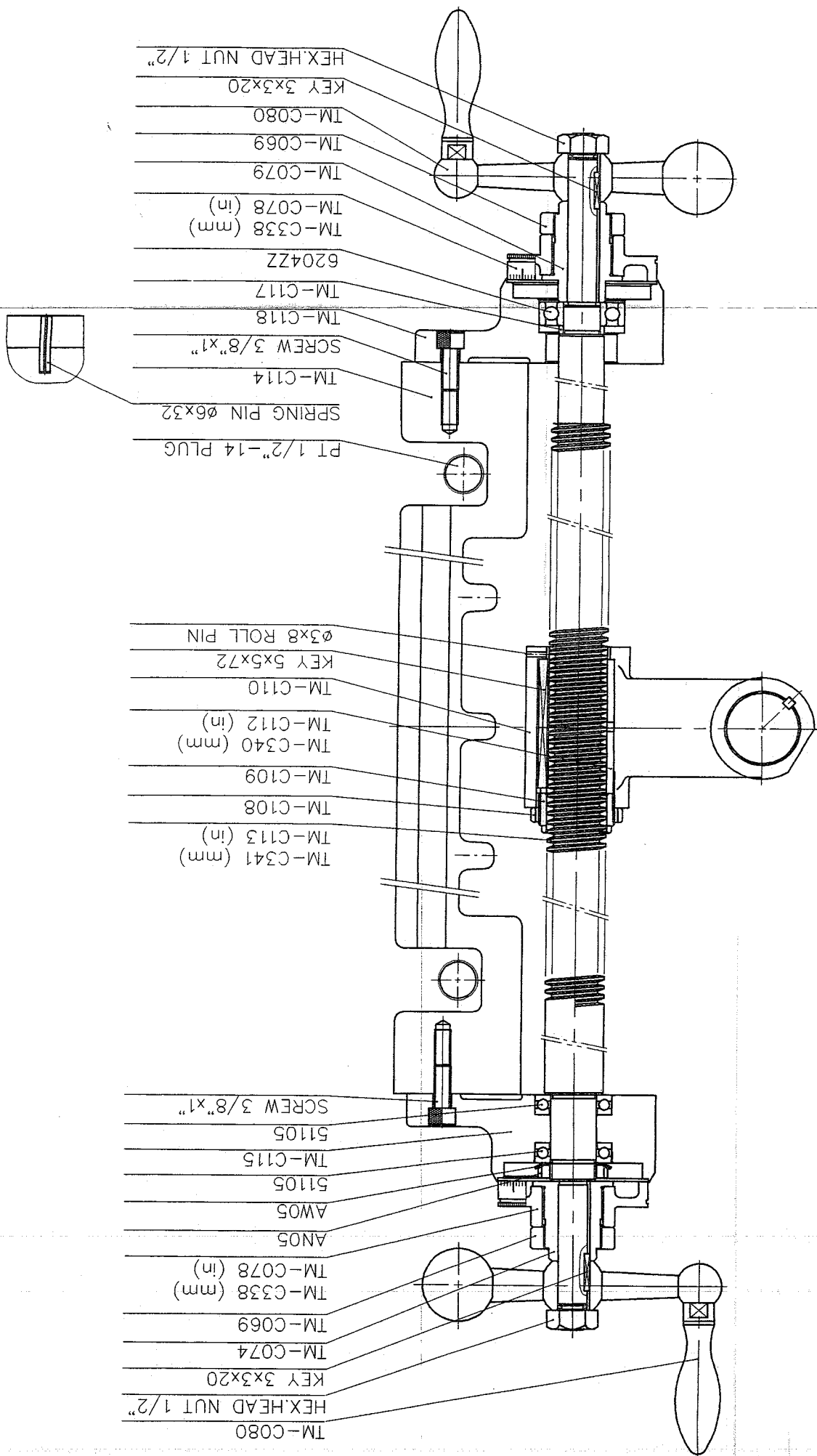
PARTS NO		PC	DESCRIPTION	REMARKS
1	TM-H144	1	GEAR	
2	TM-C222	1	UPPER WORM SPACER	
3	TM-C223	1	SCALE	
4	TM-C224	1	RAM	
5	TM-C225	1	RAM ADAPTER	
6	TM-C226	1	VERTICAL ADJUSTING WORM	
7	TM-C227	1	VERTICAL ADJUSTING WORM SHAFT	
8	TM-C232	1	WORM THRUST WASHER	
9	TM-C254	1	TURRET	
10				
11				
12				
13				
14				
15				
16				
17				
18				
19				
20				
21				
22				
23				
24				
25				
26				
27				
28				
29				
30				
31				
32				
33				
34				



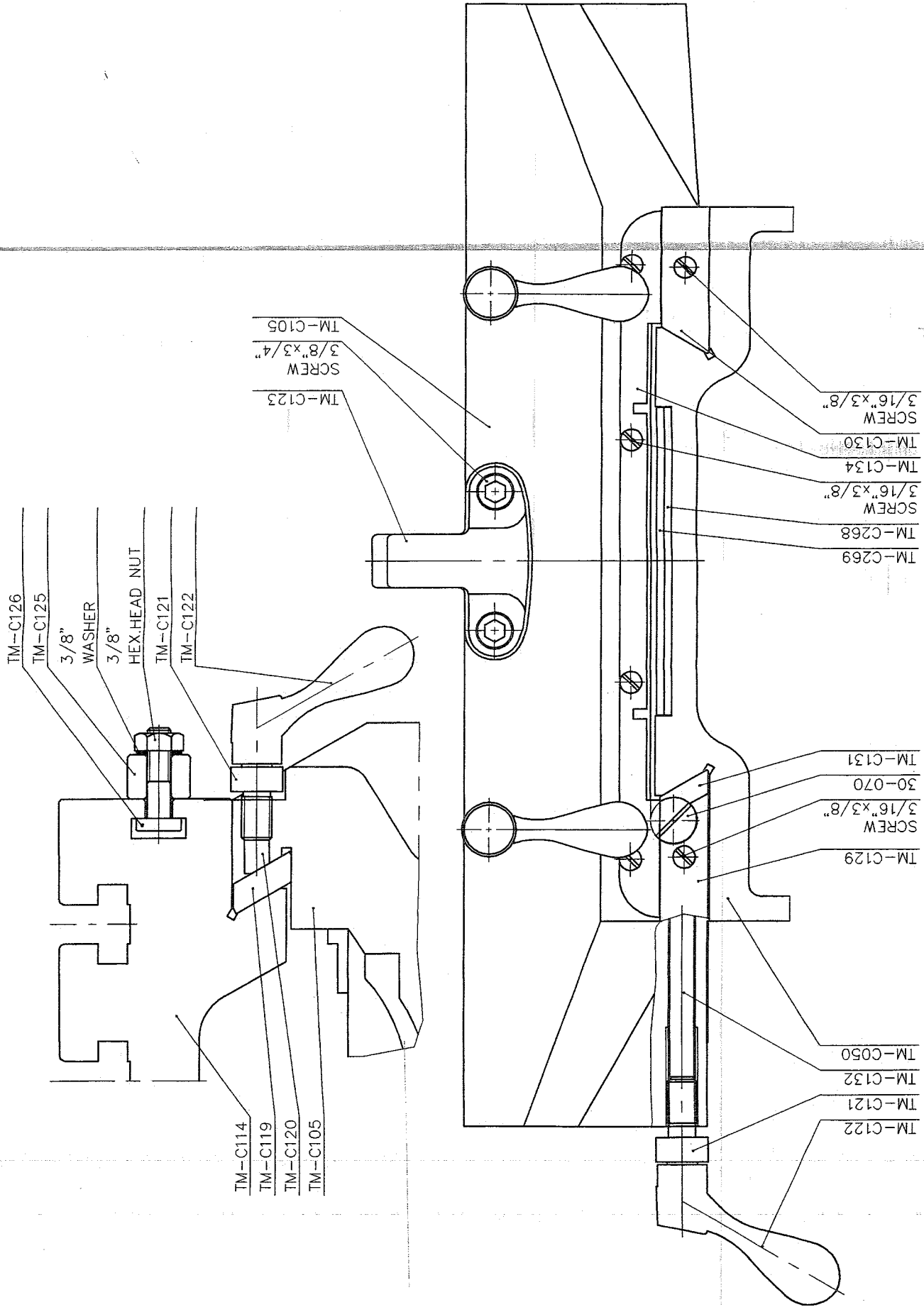
PARTS NO		PC	DESCRIPTION	REMARKS
1	TM-C219	1	HEAD ROTATING STOP PIN	
2	TM-C220	1	STOP PIN BASE	
3	TM-C224	1	RAM	
4	TM-C225	1	RAM ADAPTER	
5	TM-C228	1	ADAPTER PIVOT STUD	
6	TM-C230	2	RAM LOCK BOLT	
7	TM-C231	1	RAM PINION	
8	TM-C233	2	RAM LOCK BOLT HANDLE	
9	TM-C234	2	ADJUSTING BOLT-GIB	
10	TM-C236	1	SCALE	
11	TM-C237	1	RAM PINION HANDLE	
12	TM-C238	1	RAM PINION SCREW	
13	TM-C254	1	TURRET	
14	TM-C270	4	TURRET CLAMP BOLTS	
15	TM-C271	1	COLUMN	
16	TM-C473	6	T-BOLT	
17	TM-C217	1	SCALE	
18	TM-C272	1	SCALE	
19				
20	TM-H091	10	BRAKE LOCK WASHER	
21	TM-H333	1	BLACK PLASTIC BALL HANDLE	
22				
23				
24				
25	2G-H033	2	GRIP	
26				
27				
28				
29				
30				
31				
32				
33				
34				



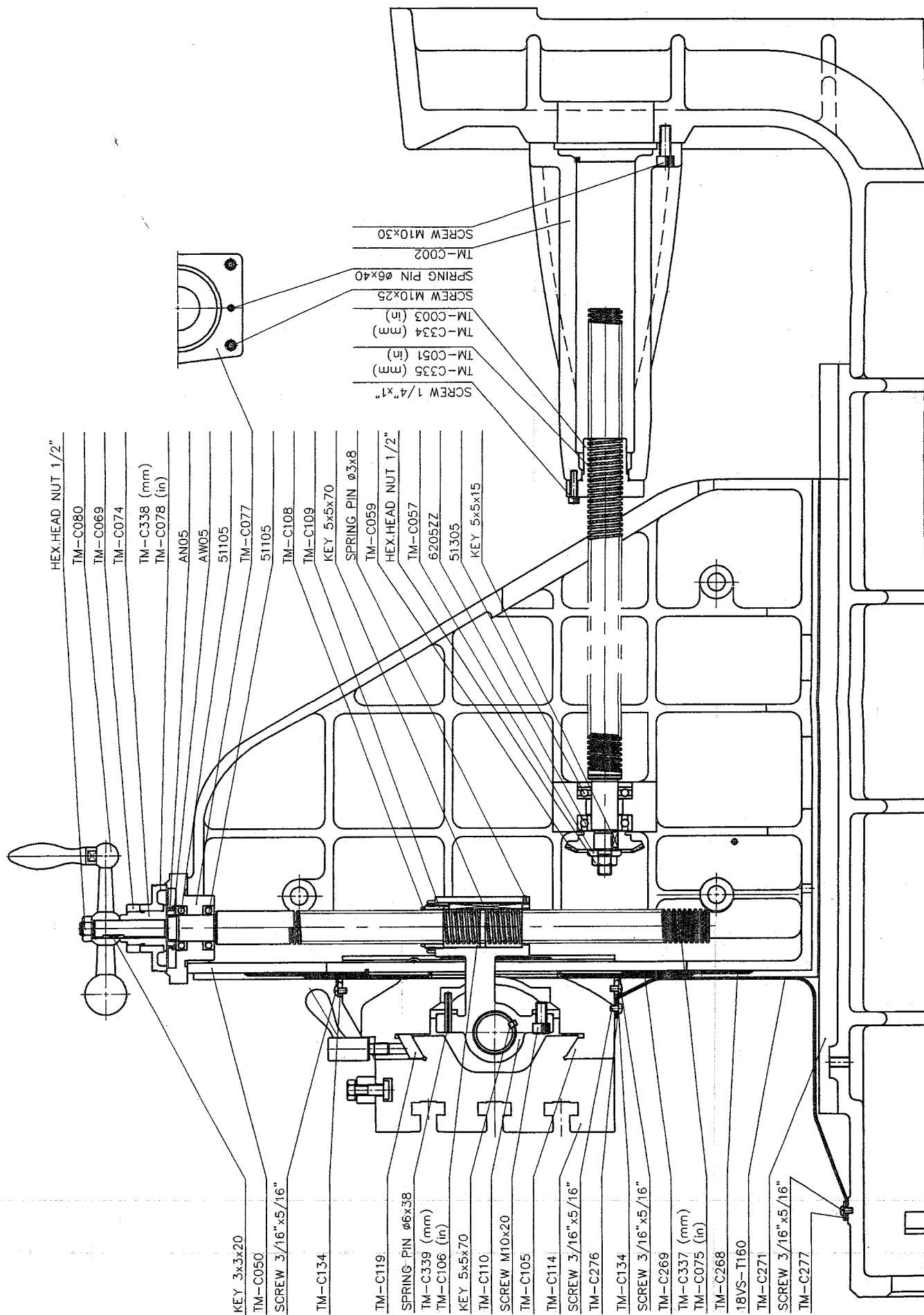
PARTS NO		PC	DESCRIPTION	REMARKS
1	TM-C069	2	DIAL LOCK NUT	
2	TM-C074	1	DIAL HOLDER	
3	TM-C079	1	DIAL HOLDER	
4	TM-C080	2	BALL CRANK HANDLE	
5	TM-C108	1	LOCK SCREW	
6	TM-C109	1	SCREW ADJUSTING NUT	
7	TM-C110	1	FEED NUT BRACKET	
8	TM-C114	1	TABLE	
9	TM-C115	1	LEFT BEARING BRACKET	
10	TM-C117	1	BEARING SPACER	
11	TM-C118	1	RIGHT BEARING BRACKET	
12	TM-C338	2	DIAL WITH 200 GRADUATIONS	
13	TM-C340	1	LONGITUDINAL FEED NUT	
14	TM-C341	1	LONGITUDINAL FEED SCREW	
15				
16				
17				
18				
19				
20				
21				
22				
23				
24				
25				
26				
27				
28				
29				
30				
31				
32				
33				
34				



PARTS NO		PC	DESCRIPTION	REMARKS
1	TM-C050	1	KNEE	
2	TM-C105	1	SADDLE	
3	TM-C114	1	TABLE	
4	TM-C119	1	SADDLE-TABLE GIB	
5	TM-C120	5	TABLE LOCK PLUNGER	
6	TM-C121	2	TABLE LOCK BOLT	
7	TM-C122	4	TABLE LOCK BOLT HANDLE	
8	TM-C123	1	TABLE STOP BRACKET	
9	TM-C125	2	TABLE STOP PIECE	
10	TM-C126	2	STOP PIECE T-BOLT	
11	TM-C129	2	LEFT HAND KNEE-SADDLE WIPER HOLDER	
12	TM-C130	2	RIGHT HAND KNEE-SADDLE WIPER HOLDER	
13	TM-C131	1	SADDLE-KNEE GIB	
14	TM-C132	1	SADDLE LOCK PLUNGER	
15	TM-C134	2	UPPER KNEE-SADDLE WIPER	
16	TM-C268	1	CHIP GUARD COVER PLATE	
17	TM-C269	1	CHIP GUARD COVER PLATE	
18				
19	30A-070		GIB ADJUSTING SCREW	
20				
21				
22				
23				
24				
25				
26				
27				
28				
29				
30				
31				
32				
33				
34				



PARTS NO		PC	DESCRIPTION	REMARKS
1	TM-C002	1	ELEVATING SCREW HOUSING	
2	TM-C334	1	ELEVATING SCREW NUT	
3	TM-C050	1	KNEE	
4	TM-C335	1	ELEVATING SCREW	
5	TM-C057	1	WASHER	
6	TM-C059	1	BEVEL GEAR	
7	TM-C069	4	DIAL LOCK NUT	
8	TM-C074	2	DIAL HOLDER	
9	TM-C337	1	CROSS FEED SCREW	
10	TM-C077	1	CROSS FEED BEARING BRACKET	
11	TM-C338	3	DIAL WITH 200 GRADUATIONS	
12	TM-C080	3	BALL CRANK HANDLE	
13	TM-C105	1	SADDLE	
14	TM-C108	2	LOCK SCREW	
15	TM-C109	2	SCREW ADJUSTING NUT	
16	TM-C110	1	FEED NUT BRACKET	
17	TM-C114	1	TABLE	
18	TM-C119	1	SADDLE-TABLE GIB	
19	TM-C134	2	UPPER KNEE-SADDLE WIPER	
20	TM-C268	1	CHIP GUARD COVER PLATE	
21	TM-C269	1	CHIP GUARD COVER PLATE	
22	TM-C271	1	COLUMN	
23	TM-C276	1	CHIP COVER PLATE	
24	TM-C277	2	CHIP COVER PLATES	
25	TM-C339	2	CROSS FEED NUT	
26	18VS-T160	1	CHIP GUARD RUBBER	
27				
28				
29				
30				
31				
32				
33				
34				



PARTS NO		PC	DESCRIPTION	REMARKS
1	TM-C028	1	HANDLE	
2	TM-C057	1	WASHER	
3	TM-C059	1	BEVEL GEAR	
4	TM-C060	1	BEVEL PINION	
5	TM-C063	1	GEAR SHAFT FOR KNEE	
6	TM-C064	1	BEARING CUP	
7	TM-C065	1	BEARING RETAINER RING	
8	TM-C068	1	DIAL HOLDER	
9	TM-C069	1	DIAL LOCK NUT	
10	TM-C070	1	GEAR SHAFT CLUTCH INSERT	
11	TM-C071	1	ELEVATING CRANK	
12	TM-C335	1	SOCKET HD CAP SCREW	
13	TM-C336	1	DIAL WITH 100 GRADUATIONS	
14				
15				
16				
17				
18				
19				
20				
21				
22				
23				
24				
25				
26				
27				
28				
29				
30				
31				
32				
33				
34				

