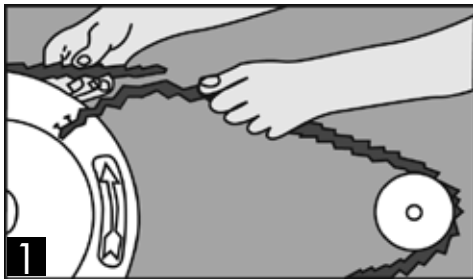




# Installation Instructions

## I. How to measure

1. Pull the belt tight around the pulleys to check hand tight length, overlapping the two holes on end of belt with corresponding studs in the opposite end to determine start length. Fig. 1.
2. Count the total number of links and remove the appropriate number of links to obtain the necessary pre-tension. See Table 1. On multi-belt drives ensure that each belt has the same number of links.

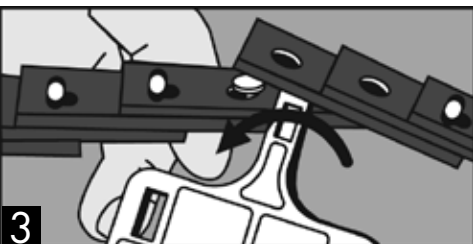
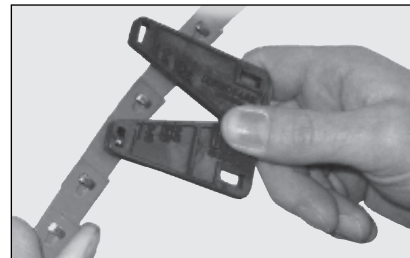


Belt Profile		Links to Remove
NuTLink	Z/10 • A/13 • B/17	1 in 11
	C/22	1 in 13
SuperTLink	SPZ • SPA • SPB • 3V • 5V	1 in 15
	SPC	1 in 17

Table 1

## II. Disassembly

1. To unfasten, turn 2 adjacent stud heads 90°. Fig 2.
2. Insert tool and twist. Fig. 3.

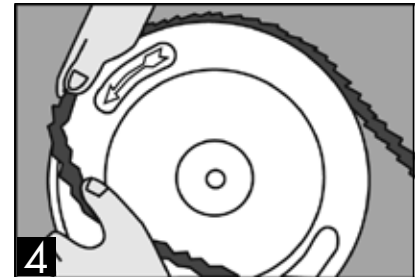
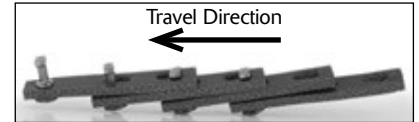


Continued →

Continued from front

## III. Installation

1. The belt must be installed with a specific travel direction as shown. For multiple belt drives install all belts to run in the same direction.
2. Make belt endless, around pulley shafts if necessary, by inserting the stud heads of the last links into the corresponding holes and turning heads 90°.
3. Fit belt into nearest groove of the smallest pulley and roll belt onto the larger pulley by hand turning the drive slowly. Fig. 4. The belt may seem very tight, this is normal. **DO NOT JOG MOTOR.**
4. For close ratio drives additional links may need to be added back in to ease installation. (NOTE: This does not apply if using the Alternative Installation Method.)



## IV. Alternative Installation Method

1. Set motor to mid-position of adjustment range and mark base clearly.
2. Determine required belt length as in I.
3. Push motor forward to minimum centre distance.
4. Install belts as in III.
5. Pull motor back to previously marked mid-position.

## V. Retensioning

Like all high performance V-belts, NuTLink and SuperTLink require the maintenance of correct drive tension to operate efficiently. Experience indicates that drive tension should be checked after 20 – 30 minutes running at full load. A retension may be necessary after 24 hours depending on the severity of the drive. Any initial belt stretch is then taken up. Subsequently, belt tension should be checked periodically and adjusted when necessary.

LEGAL COMPLIANCE NOTICE: For more information regarding the products manufactured, distributed and sold by Fenner Drives and the compliance of such products with applicable domestic law, statutes, rules and regulations relating to human health and the environment (collectively, "Environmental Laws"), including, without limitation, Proposition 65 as enacted by the State of California, please visit [www.fennerdrives.com](http://www.fennerdrives.com). If you are unable to access our website or if you have any further questions about the compliance of our products with Environmental Laws, you are encouraged to contact the Fenner Drives Health and Safety Manager at +1 (717) 665-2421.



[www.fennerdrives.com](http://www.fennerdrives.com)

US  
TEL: +1-800-243-3374  
TEL: +1-717-665-2421  
FAX: +1-717-665-2649

UK  
TEL: +44 (0)870 757 7007  
TEL: +44 (0)1924 482 470  
FAX: +44 (0)1924 482 471