



CE



Easi-Lift Loading Crane 150Kg SWL.



 ***EasiLift* 150**

Operators Handbook

Covering Installations for: Peugeot Boxer, Iveco Daily and Ford Transit







CONTENTS

1.	Safety Information
2.	Introduction
3.	Before Operating the Crane
4.	When Operating the Crane
5.	Maintenance
6.	Components
7.	Reach profile
8.	Dimensions
9.	Electrical
10.	Signage
11.	Certification
12.	Training Registration
13.	Spare Parts and Accessories
14.	Warranty Policy
15.	Fault Finding

This product has been manufactured by:
Bri-Stor Systems Ltd,
Church Lane, Hixon, Stafford, ST180PS

Tel: 01889271202
Email: sales@bri-stor.co.uk
Website: www.bri-stor.co.uk





1. SAFETY INFORMATION

- The requirements of the Machinery Directive 2006/42/EC take precedent over any advice, instruction or information provided in this booklet.
- The operator must follow the latest LOLER and PUWER regulations.
- The Easi-Lift 150 must not be used if it is not supported by valid documentation recording a thorough examination being carried out by a competent person within the last 12 months.
- The Easi-Lift 150 must be serviced and inspected in accordance with the Machinery Directive requirements.
- Persons operating this crane must be trained and competent to do so.
- Read and understand this document before using the crane for the first time.
- Do not use the Easi-Lift 150 for man lifting or riding.
- Do not overload the Easi-Lift 150-refer to the safe warning signs provided.
- During operation of the Easi-Lift 150 access to the area of operation must be restricted to the competent person(s) only and the area guarded and protected as appropriate to the site requirements , roadside operations may require permission and specific warning and guarding precautions.
- Use only correct and certified lifting attachments that have been certified by thorough examination every 6 months minimum.
- Do not leave any load suspended between lifting and lowering operations.
- Always release the crane and stow securely using the fastenings provided when not in use.
- Never leave the crane connected to a load when in transit.
- Keep the Easi-Lift 150 maintained by a competent person.
- Do not modify or re-install this machine without the approval of a competent person.
- Do not adjust or modify this machine or its factory settings without reference to Bri-Stor Systems Ltd.
- Isolate and immobilise this machine before commencing any remedial work.
- **Use only genuine parts and accessories.**

In the case of Machine malfunction call:

Tel:





2. INTRODUCTION

Hello and thank you for purchasing a Bri-Stor Easi-Lift 150 crane.

The Easi-Lift Loading Crane installed within your vehicle has been designed and manufactured by Bri-Stor Systems Ltd Hixon Staffordshire in accordance with the requirements of the Machinery Directive 2006/42/EC.

This booklet has been prepared to ensure that you have all of the necessary information available to safely operate the crane, please read this document thoroughly before operating the crane for the first time.

The crane has been regulated to safely lift a maximum load of **150kg**.

The crane has been overload tested and pre-set before delivery to yourself, subsequent modifications made to the installation will invalidate the certification. Bri-Stor Systems must be requested to provide approval before any changes are made.

As a requirement of the Lifting Operations & Lifting Equipment Regulations 1998 any person operating this crane must be competent to do so. Training must be provided before first use. Should you have queries regarding the operation of the crane please contact:

Tel:

The power supply for the crane will be provided by a 12v dc supplementary battery which is charged through a battery management system that employs a safe engine running system to ensure sufficient charge is available. The operation of the crane is activated to lift and lower by means of a hand-held pendant, Disconnect the pendant and lock away when not required to prevent unauthorised use.





3. BEFORE OPERATING THE CRANE

Ensure that this crane is only operated by trained and competent person(s). Operator(s) must read these instructions and ensure that they are familiar with the crane components and the operating procedures.

Employ any PPE equipment required or stipulated by your company.

Ensure that the cranes and associated lifting accessories Report of Thorough Examination does not exceed 12 months for the Crane and 6 months for the accessories. Ensure all lifting accessories used are correct for the application and correctly applied.

It is the operator's responsibility to inspect the crane installation daily for any defects. Ensure the vehicle is parked correctly in a safe location on firm level ground, inclines may result in uncontrolled swinging of the load, wheel chocks may be required.

Check the location for overhead cables and other hazards including underground cables / pipes etc.

Employ any barriers or safety guarding or other equipment required to safely secure the area, if in doubt a risk assessment may be required.

Check the unit visually for defects or malfunctions. Connect the control lead to the socket located on the hoist unit.

Activate the engine run system.

Disconnect the locking fasteners to enable the crane to operate freely and to its full extent.

Release the hook from its retaining eye and position over the load.

Using the pendant control check the operation of the hoist when unloaded.

The hoist has been fitted with an approved length of wire rope. For your safety and before use check that a minimum of **5 turns of rope are retained on the drum.**

This section of rope is marked with a red dye, if this red section is visible then the rope has extended too far and is unsafe to use. Rewind the rope until the red marked section can no longer be seen.

The crane is now ready to use.





4. WHEN OPERATING THE CRANE

The crane must only be used for vertical lifting of loads never persons, never extend the hoist rope beyond the swing profile of the crane arm, do not drag loads with the crane, dragging loads could result in significant structural damage to the crane and vehicle body and will invalidate your warranty.

Use the handles only to position the jib over the load. Keep hands clear of the knuckle joint.

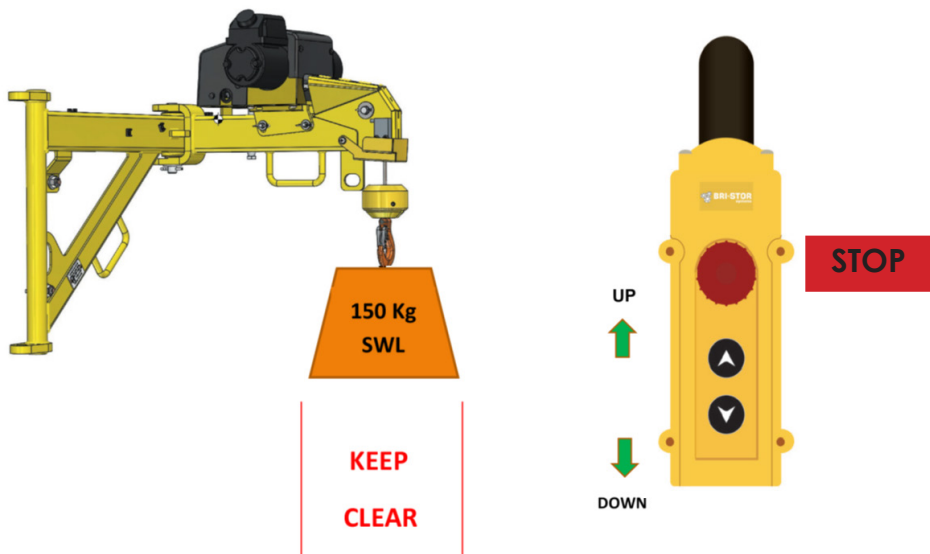
Check the weight of the load you are about to lift, this should not exceed 150kg.

The crane has been load rated to 150kg, should you attempt to lift a heavier load the crane may not lift or may cut out in mid lift, if this happens the hoist lowering function will still be enabled, lower the load to a safe location, reduce the load to a manageable size and continue as normal.

Position the load beneath the crane, lower the hook and attach the load with correct lifting accessory for the application you are using the crane for.

When lifting or positioning the load stand clear, do not steer the crane by pulling or pushing on the wire rope, never stand beneath a lifted or moving load.

When the load has been positioned within the vehicle always remove the hook, stow the crane and secure the load to the vehicle by appropriate means.





5. MAINTENANCE

The Machinery Directive 2006/42/EC takes precedent over any advice given this leaflet.

The Provision and Use of Work Equipment Regulations (PUWER) Regulation 5 states:

- (1) Every employer shall ensure that work equipment is maintained in an efficient state, in efficient working order and in good repair.
- (2) Every employer shall ensure that where any machinery has a maintenance log, the log is kept up to date.

Lifting Operations and Lifting Equipment Regulations 1998 Regulation 9 states:

Subject to paragraph (6), every employer shall ensure that lifting equipment which is exposed to conditions causing deterioration which is liable to result in dangerous situations is –

- (a) thoroughly examined
- (b)
 - (i) in the case of lifting equipment for lifting persons or an accessory for lifting, at least every 6 months;
 - (ii) in the case of other lifting equipment, at least every 12 months; or
 - (iii) in either case, in accordance with an examination scheme; and
 - (iv) each time that exceptional circumstance which are liable to jeopardise the safety of the lifting equipment have occurred; and
- (f)
 - (b) if appropriate for the purpose, is inspected by a competent person at suitable intervals between thorough examinations,
- (g) to ensure that health and safety conditions are maintained and that any deterioration can be detected and remedied in good time.

Planned maintenance schedule;

The following information is advisory as the environmental and service application of the crane may necessitate maintenance checks being undertaken to a schedule specific to that situation but in accordance with the above regulations.





Daily before use and as a minimum;

- Check visually for signs of damage to the crane or its supporting structure.
- Check for loose or missing fasteners
- Check all guarding is present and secure.
- Check the hoist rope for damage, kinks, broken strands or corrosion.
- Check for electrical cable or component damage or malfunction.
- Check the lifting hook and swaging to the rope.

Weekly;

- Check all as daily and clean the supporting structure.

Six-monthly;

- Check all as for Daily and Weekly
- Thoroughly examine the main structural fabrications for distortion, signs of deflection and soundness.
- Inspect all welds for cracking/porosity/corrosion.
- Check the security of all fixings.
- Examine all pivot points for excessive play.
- Examine pins and bushes for wear and replace where needed.
- Check all electrical cables, switches and connectors.

Annually

- A load test must be carried out by a competent person every 12 months out to test the crane safety functions and structural integrity.
- Any signs of potential failure or defects must be rectified and certification issued before the crane is returned to service.





Overload test

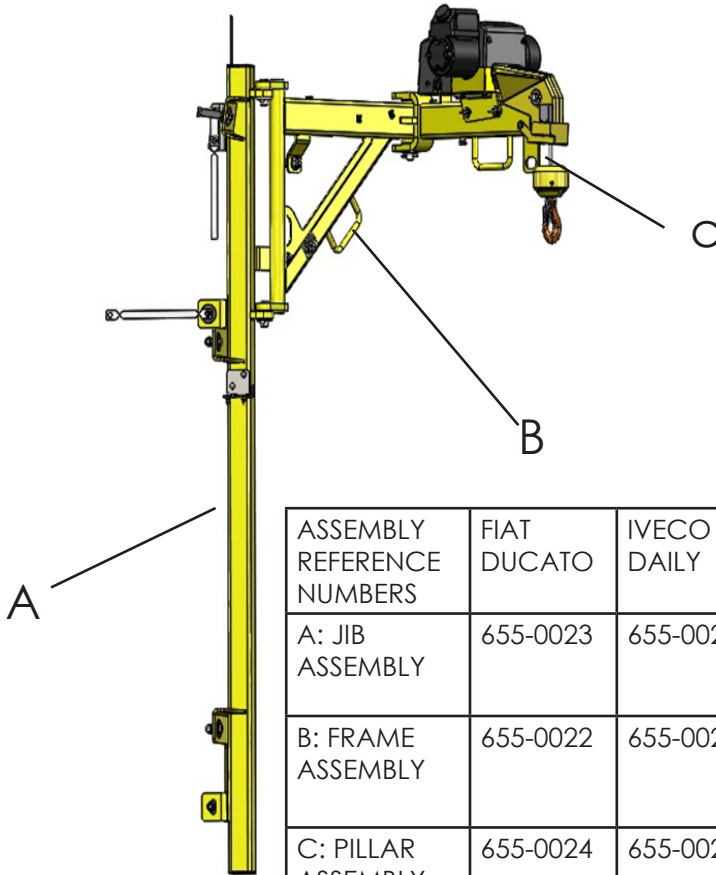
An overload test must be carried out by a competent person in the event of;

- The crane being moved to a new or modified supporting structure
- Any modifications that have been carried out to the Easi-Lift 150 or supporting structure.
- Following any incident which has caused damage to the Easi-Lift 150 or its supporting structure.
- An incident involving injury to persons.





6.COMPONENTS

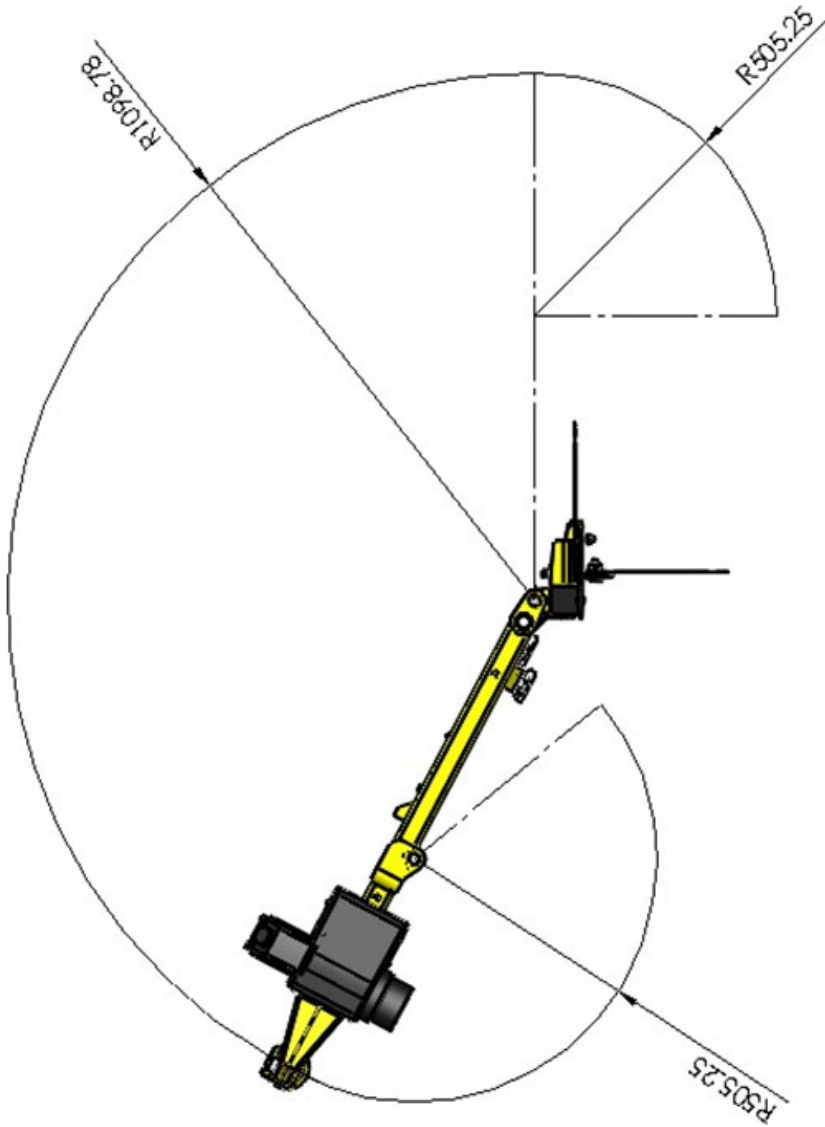


ASSEMBLY REFERENCE NUMBERS	FIAT DUCATO	IVECO DAILY	FORD TRANSIT
A: JIB ASSEMBLY	655-0023	655-0023	655-0023
B: FRAME ASSEMBLY	655-0022	655-0022	655-0022
C: PILLAR ASSEMBLY	655-0024	655-0026	655-0027
D: FULL ASSEMBLY	655-0020	655-0029	655-0028



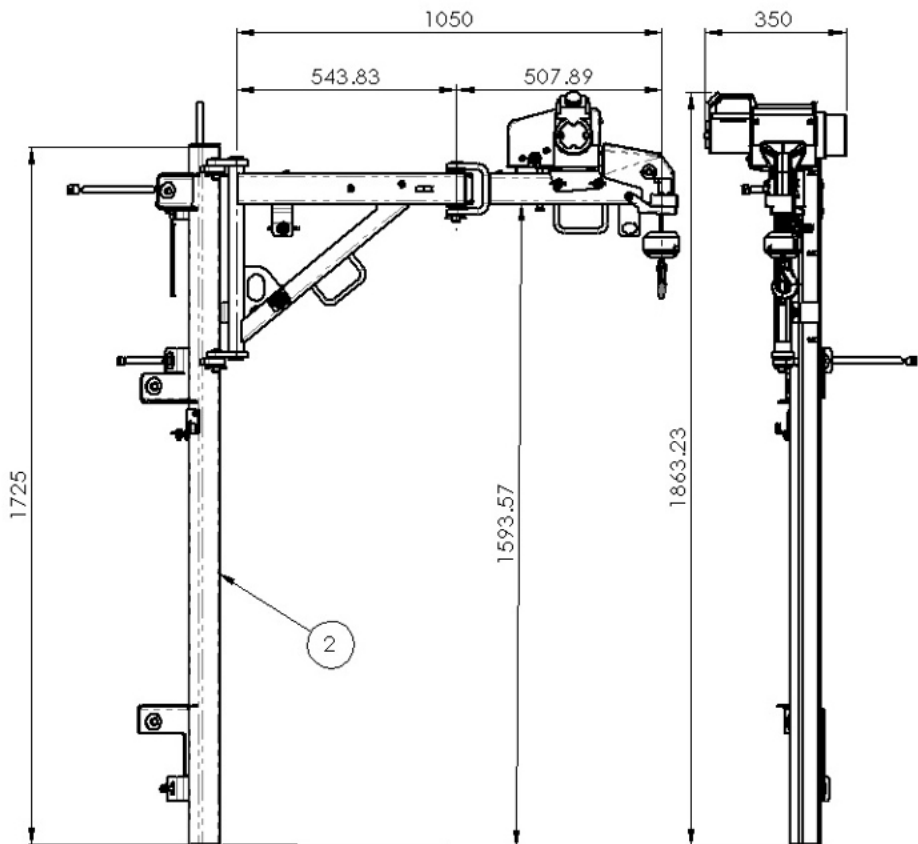


7. REACH PROFILE





8. DIMENSIONS





9. ELECTRICAL

BS ISO 15442:2012+A1:2015 Safety requirements for Loader Cranes.

Regulations

2.4.9 Electrical systems and related phenomena

4.9.1 General

The electrical equipment of loader cranes shall comply, as applicable with IEC 60204-32:2008, including; 4.3.3, DC electrical supply, Clause 12, conductors and cables, and Clause 13, wiring practices. 4.9.2 Electromagnetic compatibility (EMC).

For immunity, the EMC of the electrical system shall comply with IEC 61000-6-2 and, for emissions, with IEC 61000-6-4. When the manufacturer of the crane used certified components for the electrical system which fulfil the requirements of the aforementioned International Standards and these components are installed in accordance with the recommendations of the supplier, testing of the electromagnetic compatibility of the complete electrical system is not necessary.

Installation

4.10.6.1 General

The electrical equipment used for the installation of a loader crane shall comply, where applicable, with the requirements of the following sections of IEC 60204-32:2008:

4.3.2, AC electrical supply;

4.3.3, DC electrical supply;

Clause 12, conductors and cables;

Clause 13, wiring practices.

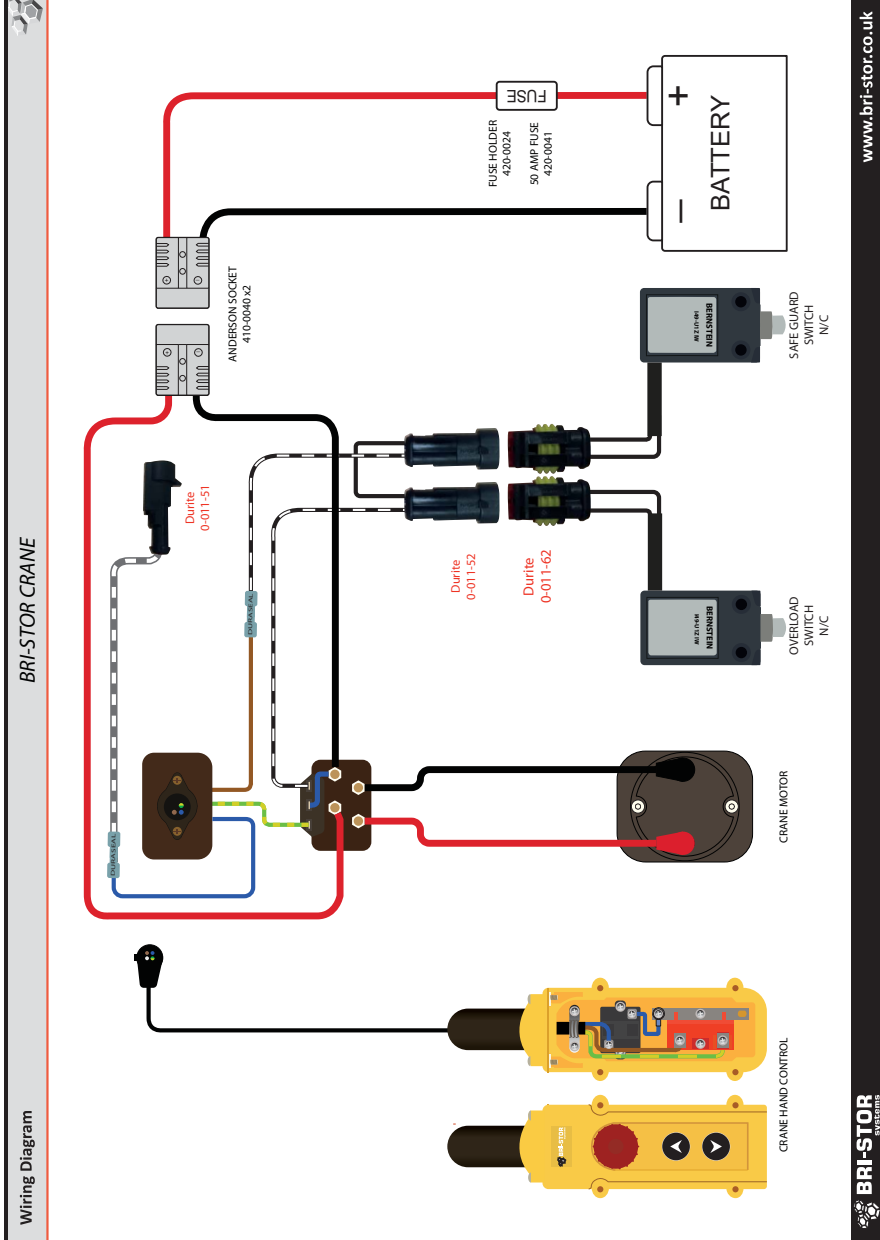
For loader cranes mounted on chassis, any electrical connection to the chassis electrical system shall be made only at the manufacturer's designated connection points 4.10.6.2 Electromagnetic compatibility (EMC).

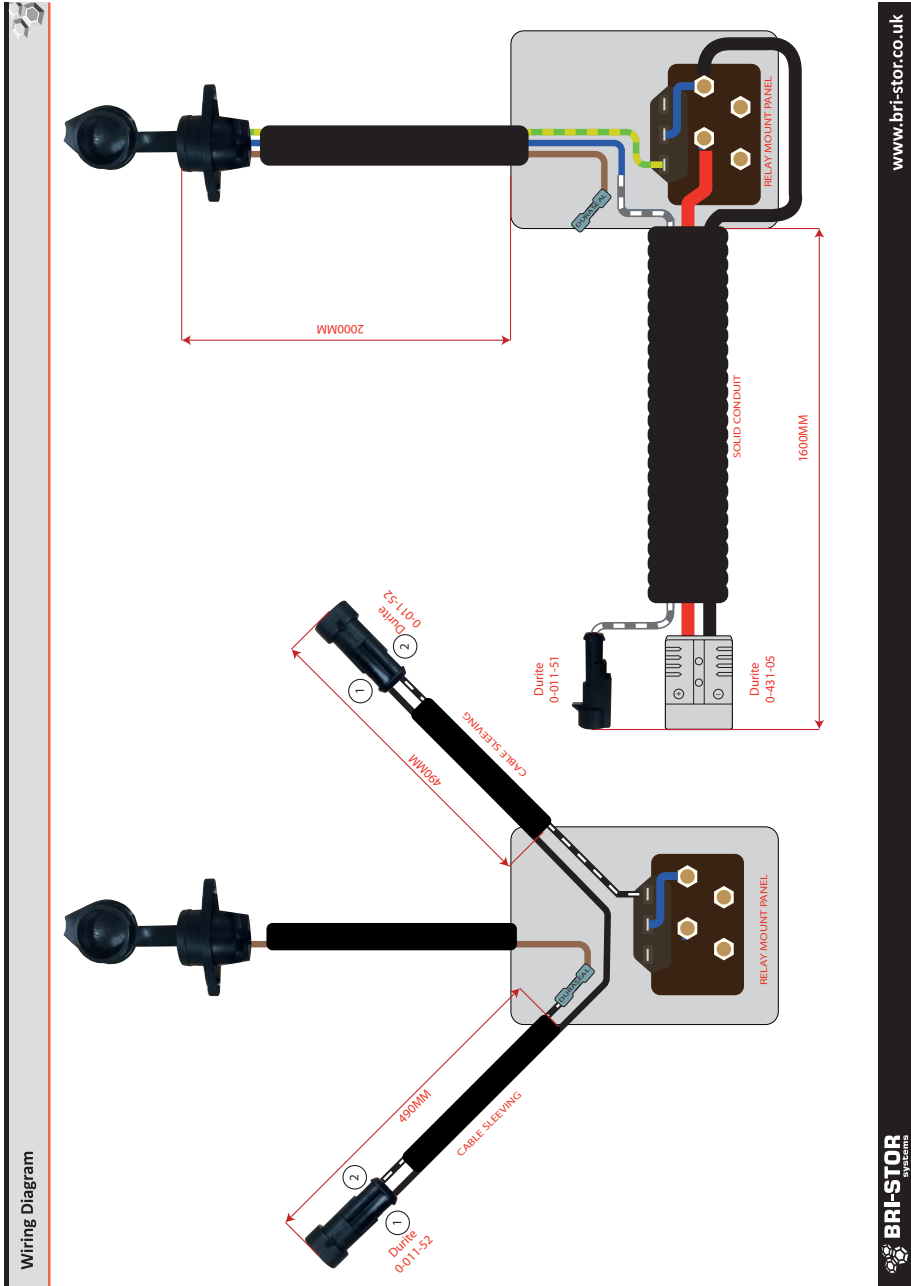
For immunity, the EMC of the electrical system shall comply with IEC 61000-6-2 and, for emissions, with IEC 61000-6-4. When the installer of the crane uses certified components (for any additional items in the electrical system) which fulfil the requirements of the aforementioned: International Standards and these are installed in accordance with the recommendations of the manufacturer, testing of the electromagnetic compatibility of the modified system is not necessary.





Circuit diagram







10. SIGNAGE



BRI-STOR EASI-LIFT 150 CE

PLEASE READ THESE OPERATING INSTRUCTIONS BEFORE USE

- This crane has a safe working load of 150kg, do not attempt to lift loads in excess of this figure.
- The crane should only be operated by trained and competent persons.
- The crane should only be used for straight vertical lifts, never extend the hoist rope beyond the swing profile of the crane arm, dragging loads with the winch is dangerous and will invalidate the warranty.
- The hoist rope is supplied to an approved length.
- For your safety 5 turns of rope must always be retained on the hoist drum before lifting.
- This section of rope is marked with red dye, if this red section becomes visible the rope has extended too far and is unsafe to use.
- Rewind the rope until the red marked section is no longer visible.
- Do not over-extend the rope, it may reverse wind on the drum and will require replacement.
- Only use load rated and certified slings and chains in a safe configuration.
- Use best practice when lifting and traversing loads.
- Take care at all times, never stand beneath a lifted or moving load.
- The crane is load rated to 150kg, should you attempt to lift in excess of this figure the hoist winch will cut out and only allow the lowering function to operate, if this happens lower the load safely to ground level, reduce the load to a manageable weight and continue as normal.
- Never remove the winch cover or attempt to adjust the load rating or electrical functions, this is dangerous and will invalidate your warranty.
- The winch is powered by a 12v dc supplementary battery, ensure this has sufficient charge to complete the duties you require, In the event of an electrical fault or battery failure do not attempt to remove a load mid lift, contact your supervisor/manager for instructions.
- Your operating company should provide you with a schedule or procedure to enable the regular inspection of the crane / hoist rope/ hooks / slings / chains etc. you must ensure these procedures are followed.
- Remove the pendant when stowed to prevent unauthorised use.

THIS CRANE HAS A SAFE WORKING LOAD OF 150 Kg
FOR A SERVICE CONTACT NUMBER PLEASE REFER TO YOUR HANDBOOK

LABEL REF: 888-1978/G

SWL: 150 Kg

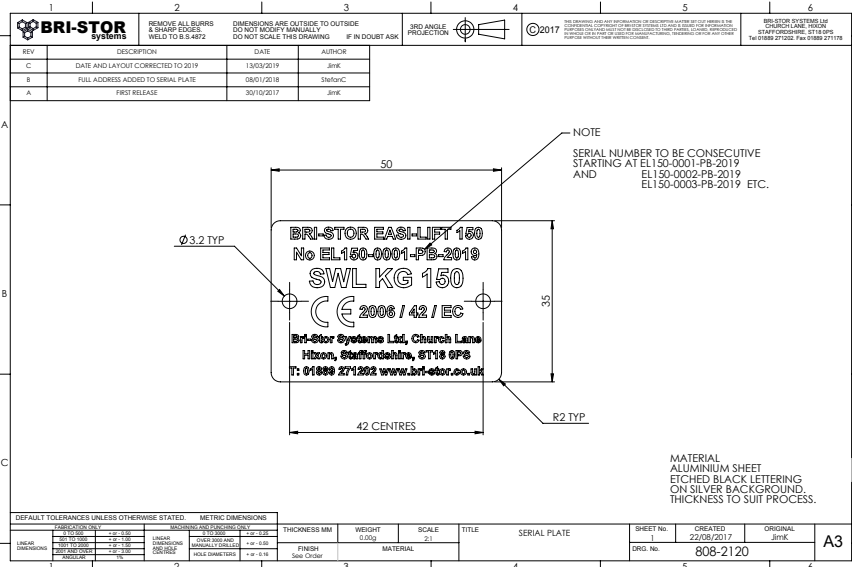
BRI-STOR SYSTEMS LTD CE

PLEASE NOTE
NON SERVICEABLE PARTS
REMOVAL OF THIS COVER WILL
INVALIDATE YOUR WARRANTY





Serial Plate



Serial plate reference numbers

Vehicle Type	Peugeot Boxer	Iveco Daily	Ford Transit
Serial number	EI150-0001-PB-2019	EI150-0001-ID-2019	EI250-0001-FT-2019





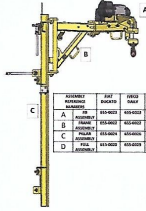
11.CERTIFICATION

Thorough Examination Certificate

TEST CERTIFICATE NUMBER: - BVUK/ETS/6469855/1217/001

Witness of Test and Examination of Vehicle Mounted Pillar Jib Crane



1	2	3	4
Situation and description of hydraulic platform with plant number and distinguishing mark. (Sufficient particulars must be given to identify the equipment)	Type of Test.	Proof load applied.	Safe Working Load to be applied to this equipment. (SWL)
Vehicle Mounted Pillar Jib Crane Serial No:- 0001 (Fiat Ducato) (655-0020) Bri-Stor Ltd 2017 	Dynamic Load + 125% Static +125%	190kgs. 190kgs.	150kg

Company undertaking the test: - Bri-Stor Systems Limited
 Church Lane
 Hixon
 Stafford
 ST18 0PF.

Qualification or Status of Signatory: - Principle Consultant – Crane & Lifting.

Declaration:- I certify that on the 09/10/2017 the above Pillar Jib Crane was tested by a competent person who was employed by Bri-Stor Ltd and that a Thorough examination of the said Pillar Jib Crane after the test showed that it had withstood the proof load without injury or permanent deformation and that the safe working load as shown in column 4 on this certificate is clearly marked.

Signature :-

Date:- 22th December 2017

Nick Green.



Bureau Veritas UK Limited, Registered in England and Wales Company No 01758622
 Parklands, 825 Wilmslow Road, Didsbury Manchester M20 2RE.

BVUKETS6469855/NG/1217





Certificate of Conformity



EC Declaration of Conformity

We Bri-Stor Systems Ltd
Church Lane, Hixon, Stafford ST180PS

Hereby declare that the product(s) identified below conform to the requirements of 2008/1597, The supply of machinery (safety) regulations 2008 and the following Directives and Standards and other Normative Documents where appropriate.

EU directives and Regulations	Machinery Directive 2006/42/EC
	European Council EMC Directive 89/336/EEC
	Electrical Equipment Safety Regulations 1994
Standard(s)	BS ISO 15442:2012+A1 2015 Safety Requirements for Loader Cranes
	BS 7121 Parts 1,2 and 4
	BS EN 982 Safety of Machinery.
	EN 50081-1:1997 -Electromagnetic compatibility, General standard.
	Radiated RF Emissions Class B (30MHz-300MHz)
Normative Documents	DIN 15018 Steel Structures
	BS 2573 Rules for Design
	The Lifting Operations and Lifting Equipment Regulations 1998
	The provision and use of Work Equipment Regulations 1998
All technical information is held within a Design File compiled by Mr J Kirkwood c/o Bri-Stor Systems Ltd	

Model	Bri-Stor Easi-Lift 150kg SWL
Serial Number	EL150
Inspector	
Date of inspection and test	
Next thorough examination due.	
Authorised	AP Humphrey, Managing Director

Issue B Dated 05-03-2019





12. TRAINING REGISTRATION

Date	Trained Operator	Signature	Trained By	Signature

Upon completion of the installation one person will be nominated as a trained operator. Further training will be the responsibility of the owner of the equipment.





13. SPARE PARTS & ACCESSORIES

For any spare parts and accessories call the helpline on:-

Tel:

14. WARRANTY POLICY

Warranty subject to agreed contract.

15. FAULT FINDING

Fault finding should be undertaken by a competent person.







CE



EasiLift 150

Easi-Lift Loading Crane

This product has been manufactured by:

Bri-Stor Systems Ltd

Church Lane

Hixon, Stafford

ST180PS

Telephone 01889 271202
Email: sales@bri-stor.co.uk
Website: www.bri-stor.co.uk

March 2019

