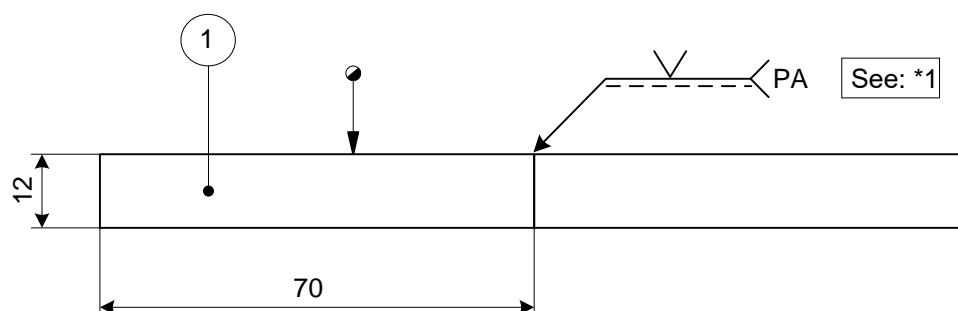
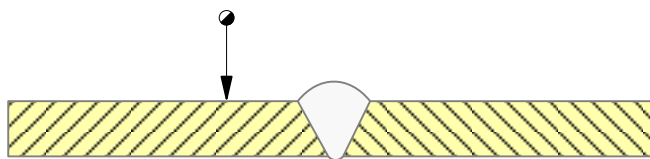
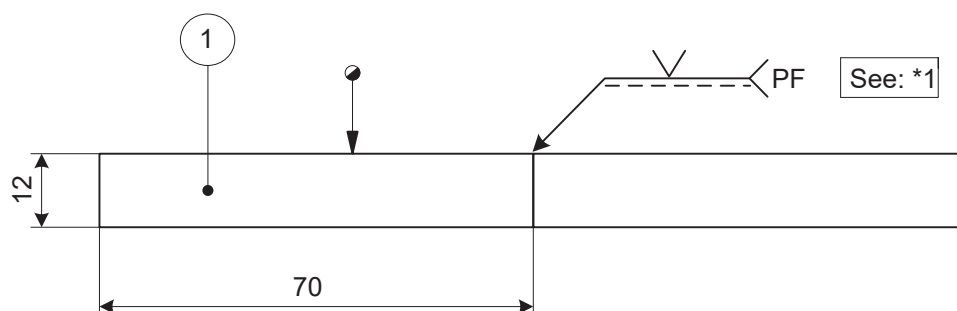
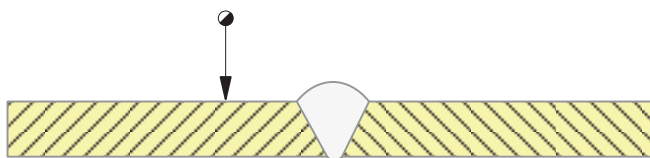


2	2	Strip	30 x 10 – 250	S235		
1	1	Strip	70 x 10 – 250	S235		
Part no.	Number	designation	Dimensions	Material type		
	Welding process: 135 – 136 – 138		examination: Visual and sizes	Institute for Welding Technology		
	Scale: not to scale		Signed:Institute for Welding Technology			
	Unit of measure: mm		Date: 24 – 10 – 2020			
	Max. working time: 60 min.		☉ = Candidate No.			
Workpiece no. Silver	Level: 2	workpiece name : CROSS-PIECE			Rev: May. 2021	A 4



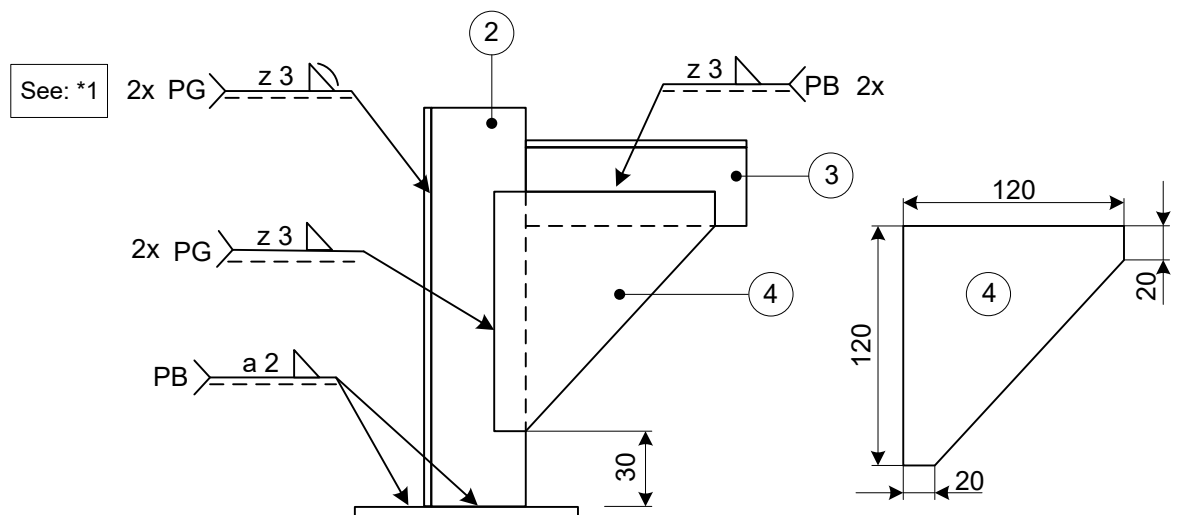
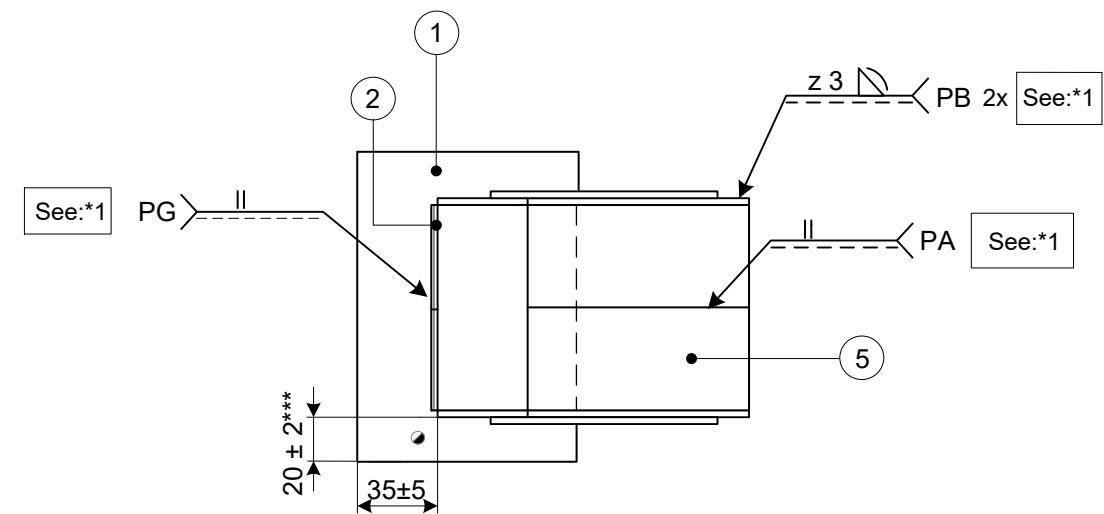
\*1= full penetration

1	2	Strip	70 x 12 – 250 (chamfer 30° one side )	S235	
Part no.	Number	designation	Dimensions	Material type	
	Welding process: 135 – 136 - 138		examination: Visual, measurements and radiographic examination	<b>Institute for Welding Technology</b>	
	Scale: not to scale		Signed: <b>Institute for Welding Technology</b>		
	Unit of measure: mm		Date: 24 – 10 – 2020		
	Max. working time: 35 min.		☉ = Candidate No.		
Workpiece no. <b>Silver</b>	Level: <b>2</b>	workpiece name: <b>PLATE-PLATE WELD JOINT</b>		Rev: May. 2021	A 4



\*1= full penetration

1	2	Strip	70 x 12 – 250 (chamfer 30° one side )	S235	
Part no.	Number	designation	Dimensions	Material type	
	Welding process: 135 – 136 - 138		examination: Visual, measurements and radiographic examination	<b>Institute for Welding Technology</b>	
	Scale: not to scale		Signed: <b>Institute for Welding Technology</b>		
	Unit of measure: mm		Date: 24 – 10 – 2020		
	Max. working time: 35 min.		☉= Candidate No.		
Workpiece no. <b>Silver</b>	Level: <b>2</b>	workpiece name: <b>PLATE-PLATE WELD JOINT</b>		Rev: May. 2021	A 4



\*1= full penetration

\*\* Grind to size yourself according to the desired pre-opening.

\*\*\* Dimensions depend on gap opening, corner support center on baseplate.

5	2	Plate	50 x 3 - 120 **	S235		
4	2	Sketch plate	120 x 3 – 120	S235		
3	2	Plate	50 x 3 – 120	S235		
2	4	Plate	50 x 3 – 200	S235		
1	1	Plate or Strip	100 x 6 – 150	S235		
part no.	Number	designation	Dimensions	Material type		
	Welding process: 135 - 136 – 138		examination: Visual and sizes	Institute for Welding Technology		
	Scale: not to scale		Signed: <b>Institute for Welding Technology</b>			
	Unit of measure: mm		Date: 24 – 10 – 2020			
	Max. working time: 60 min.		☉ = Candidate No.			
Workpiece no. <b>Silver</b>	Level: <b>2</b>	workpiece name: <b>CORNER BRACKET</b>			Rev: May. 2021	A 4