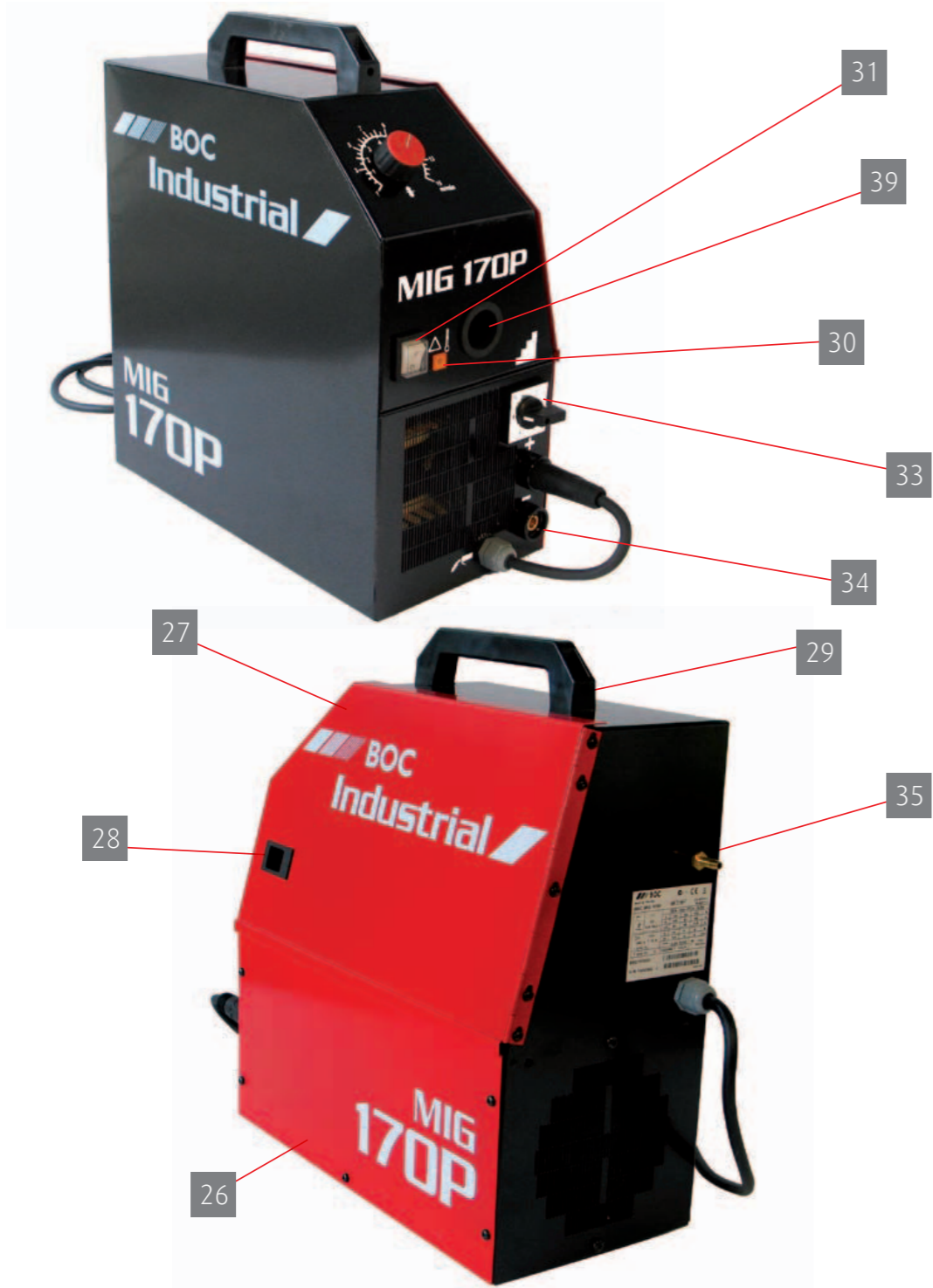


Specifications BOC MIG 170P/190C



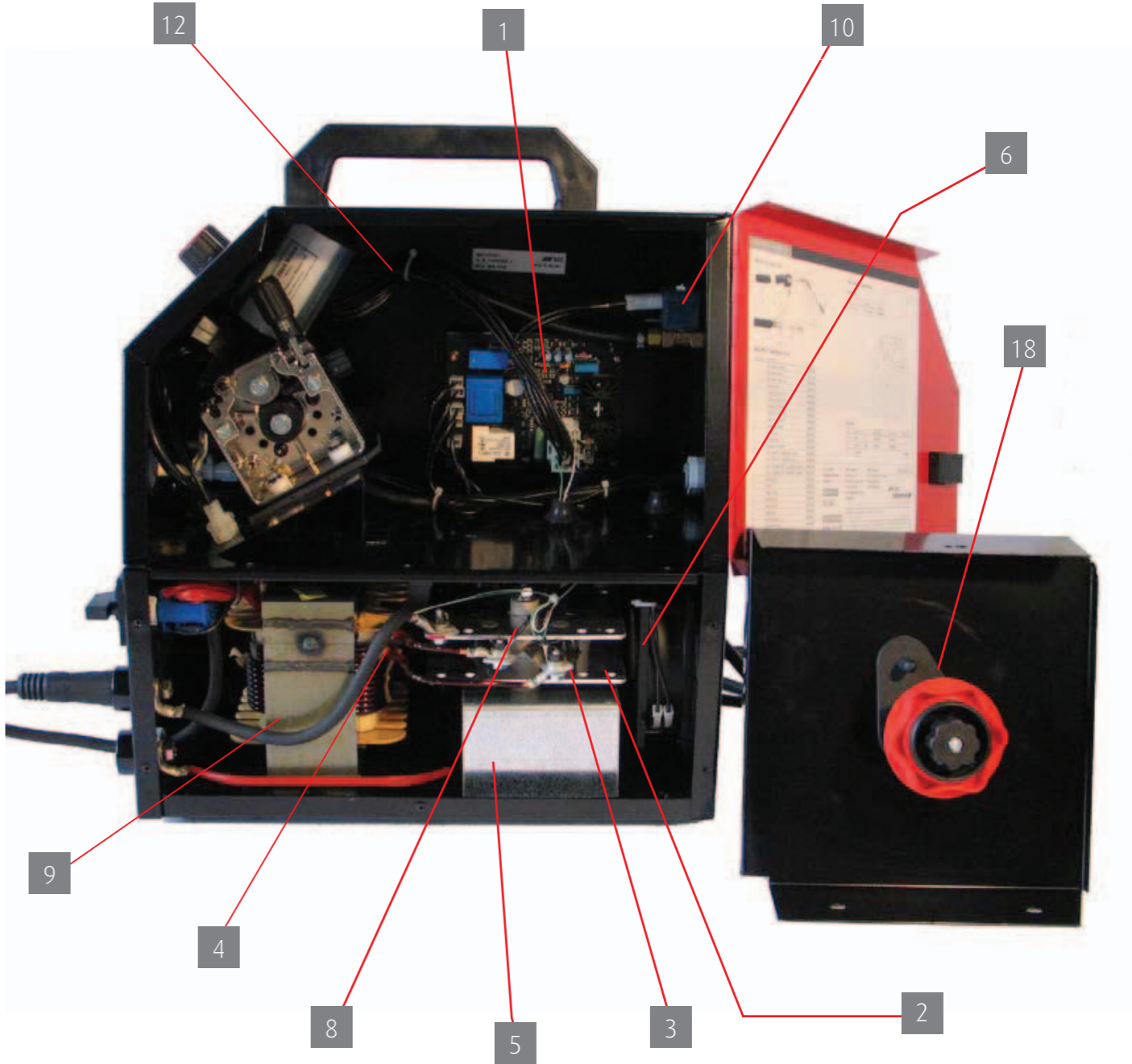
| Model No. | 170P | 190C |
|---|--------------|--------------|
| Part No. | B621117001 | B621119001 |
| Supply Voltage (V) | 220-240 | 220-240 |
| Frequency (Hz) | 50/60 | 50/60 |
| Phase | 1 | 1 |
| Rated primary current (A) | 15 | 15 |
| Supply Fuse (recommended A) | 20 | 20 |
| Primary cable length (m) | 2 | 3 |
| Welding current (Amps) | 35-150 | 35-190 |
| Duty Cycle | 23% @140A | 15% @ 175A |
| Output Voltage OCV (V) | 19.5 - 34.2 | 16-35 |
| Voltage Steps | 6 | 8 |
| Inductance Settings | N/A | N/A |
| Remote interconnection cable length (m) | N/A | N/A |
| BOC gun/length (m) | MG17i/3 | MG17i/3 |
| Wire Feed Speed (m/min) | 0-15 | 0-15 |
| Wire Diameter (mm) | Solid | 0.6 - 0.8 |
| | Soft | 0.6 - 0.9 |
| | Flux Cored | 0.8 - 1.2 |
| Weight (Kg) | 27 | 46 |
| Dimensions HxWxL (cm) | 48 x 21 x 53 | 66 x 38 x 86 |

Parts Details BOC MIG 170P



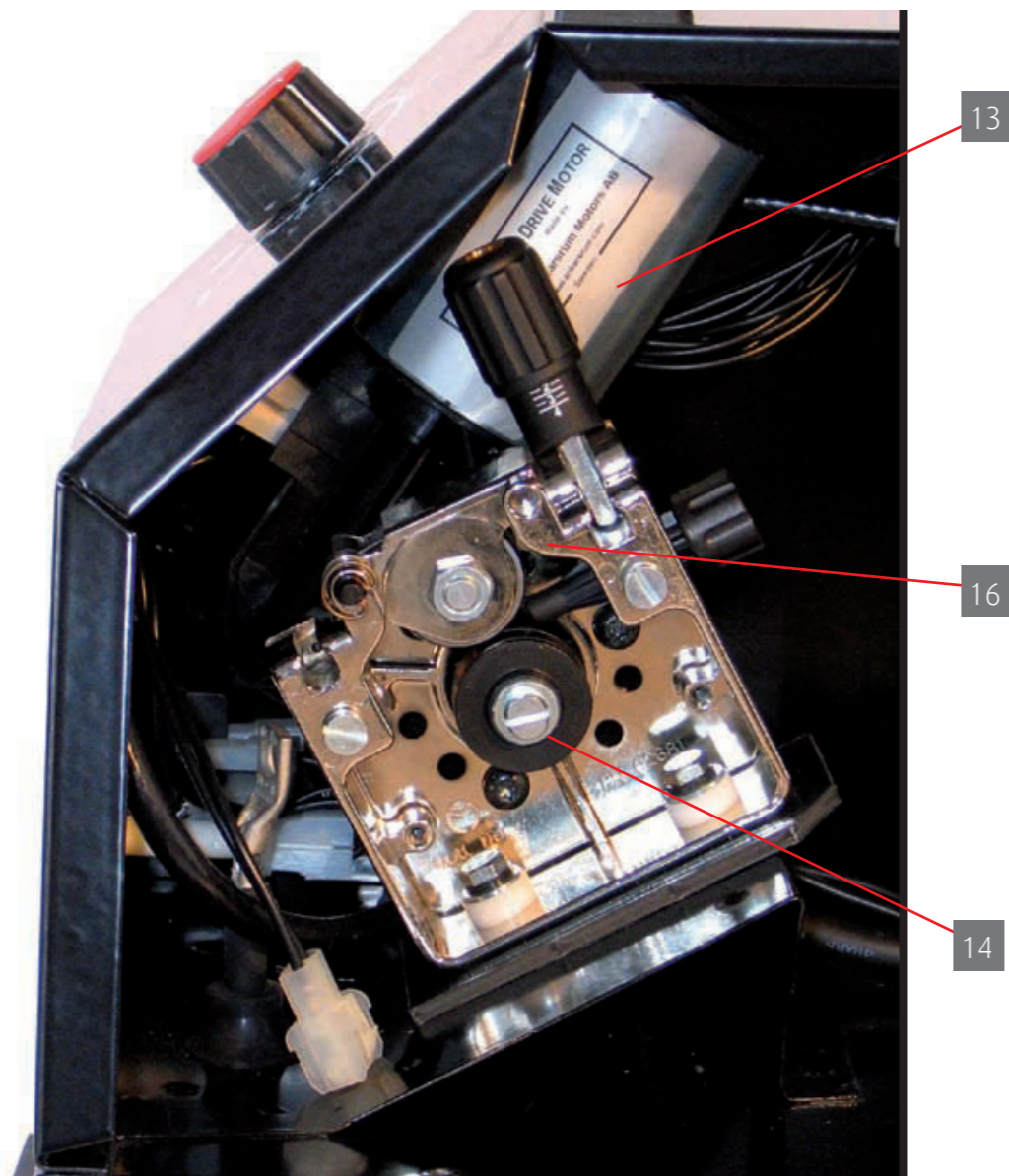
| NO. | PART NO. | DESCRIPTION |
|-----|----------|------------------------|
| 26 | 3145440 | SIDE PLATE RIGHT |
| 27 | 3145430 | DOOR |
| 28 | 9549064 | SLIDE LOCK |
| 29 | 2062900 | PLASTIC HANDLE |
| 30 | 9775728 | THERMAL OVERLOAD LIGHT |
| 31 | 9761221 | ON/OFF SWITCH |
| 33 | 9760313 | VOLTAGE SWITCH |
| 34 | 9771509 | MACHINE SOCKET DIX 25 |
| 35 | 9568913 | HOSE CONNECTOR |
| 39 | 9791650 | TORCH INLET RING |

Parts Details BOC MIG 170P - Internal



| NO. | PART NO. | DESCRIPTION |
|-----|-----------|---|
| 1 | 4292610 | CONTROL CARD FOR SERIAL NUMBERS UP TO 1222675 |
| 1.1 | SP000437 | CONTROL CARD FOR SERIAL NUMBERS OVER 1222675 |
| 2 | 9755671 | CAPACITOR |
| 3 | 4292420 | INSULATION / CAPACITOR |
| 4 | 9750158 | RECTIFIER |
| 5 | 3144920 | CHOKE |
| 6 | 954421501 | COOLING FAN |
| 8 | 4291990 | PTC RESISTOR |
| 9 | 3145410 | TRANSFORMER |
| 10 | 956300201 | SOLENOID VALVE |
| 12 | 9370157 | GAS HOSE |
| 18 | 2062070 | HUB FOR WIRE REEL |

Parts Details BOC MIG 170P - Internal Zoom



| NO. | PART NO. | DESCRIPTION |
|-----|----------|-----------------------------|
| 13 | 9541084 | MOTOR / GEARBOX WIRE FEEDER |
| 14 | 9542001 | CHASSIS WIRE FEEDER |
| 16 | 9542004 | REAR GUIDE TUBE COOP |

Parts Details BOC MIG 190C



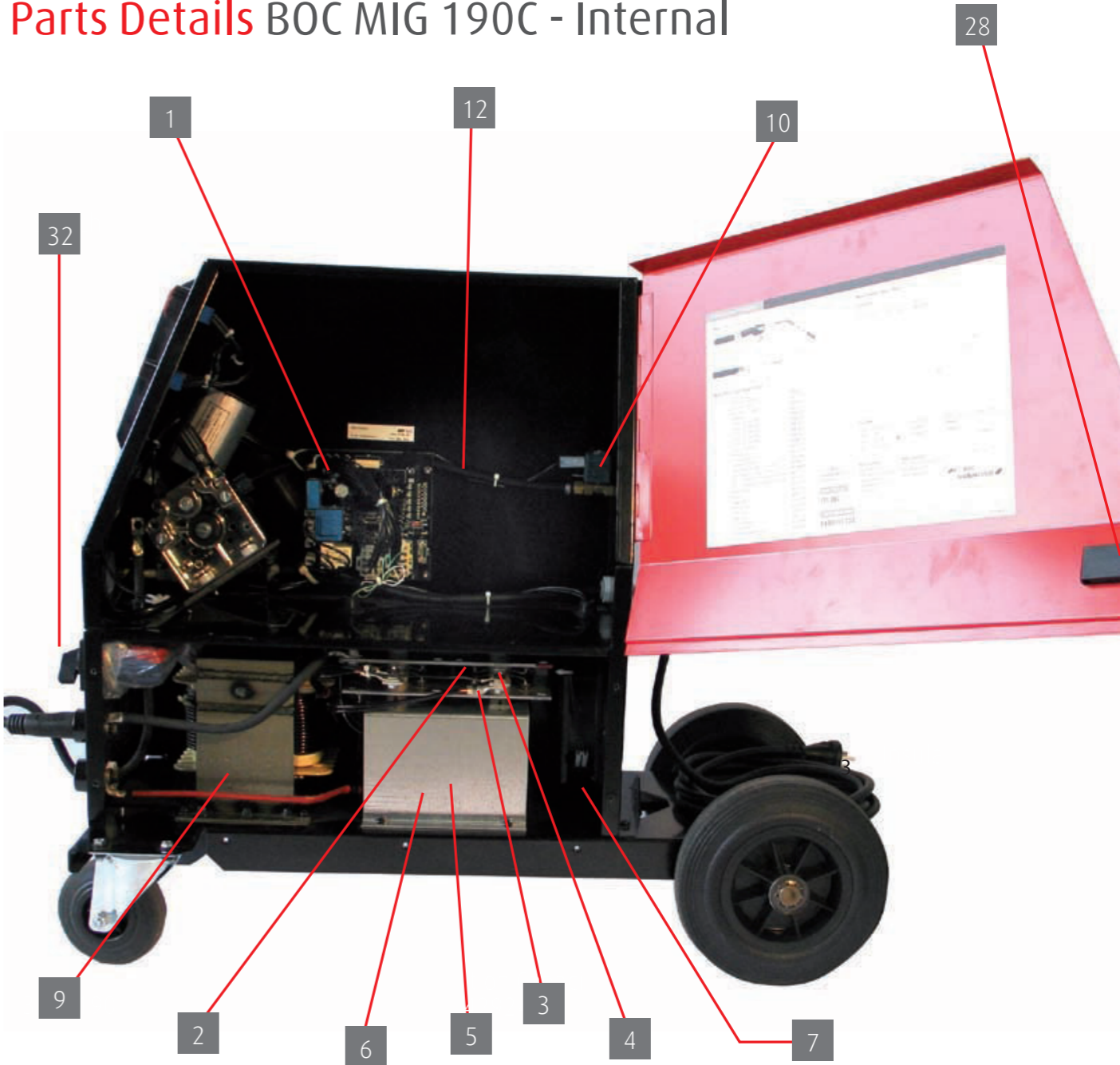
| NO. | PART NO. | DESCRIPTION |
|-----|----------|------------------------|
| 29 | 2062900 | HANDLE |
| 30 | 9775728 | THERMAL OVERLOAD LIGHT |
| 31 | 9761221 | ON/OFF SWITCH |
| 32 | 9760315 | VOLTAGE SWITCH |
| 33 | 9759111 | KNOB D36 WIRE SPEED |
| 34 | 9791650 | INLET RING |
| 37 | 9547770 | WHEEL, CASTOR |
| 38 | 9761350 | 2T / SPOT / 4T SWITCH |
| 39 | 9771509 | MACHINE SOCKET DIX 25 |

Parts Details BOC MIG 190C



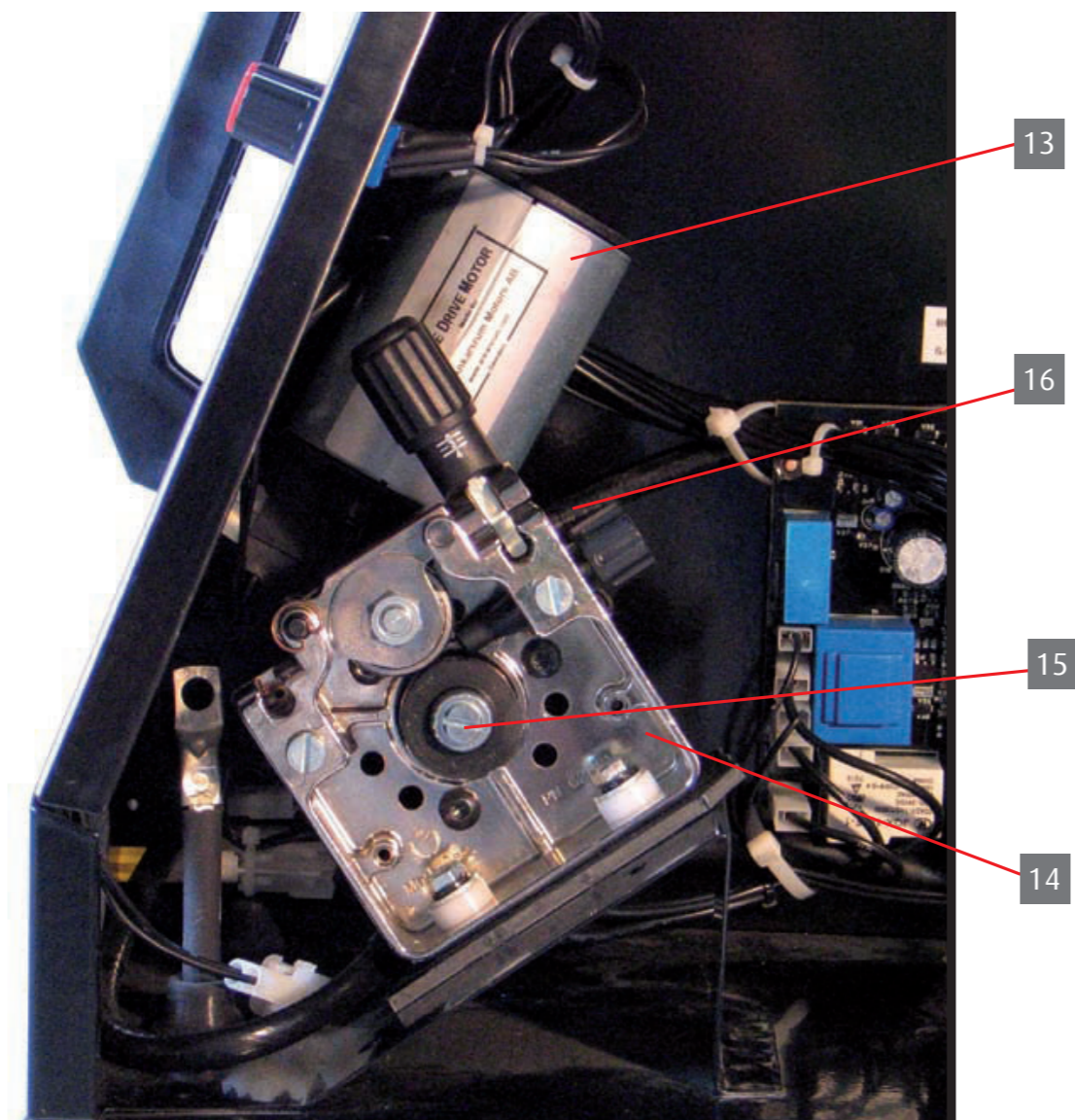
| NO. | PART NO. | DESCRIPTION |
|-----|----------|-------------------------|
| 26 | 3145440 | SIDE PLATE RIGHT |
| 27 | 3145430 | DOOR PLATE |
| 35 | 9547105 | REAR WHEEL |
| 36 | 9568913 | HOSE CONNECTOR |
| 42 | 9425220 | LOCKING RING SHAFT D 20 |

Parts Details BOC MIG 190C - Internal



| NO. | PART NO. | DESCRIPTION |
|-----|-----------|------------------------|
| 1 | 4292610 | CONTROL CARD A001 |
| 2 | 9755671 | CAPACITOR |
| 3 | 4292420 | INSULATION / CAPACITOR |
| 4 | 9750157 | RECTIFIER |
| 5 | 4291990 | PTC RESISTOR |
| 6 | 3144920 | CHOKE |
| 7 | 954421501 | COOLING FAN |
| 9 | 3145410 | TRANSFORMER |
| 10 | 956300201 | SOLENOID VALVE |
| 12 | 9370157 | PLASTIC HOSE 5/8,2 |
| 28 | 9549064 | SLIDE LOCK |
| 32 | 9760315 | VOLTAGE SWITCH |

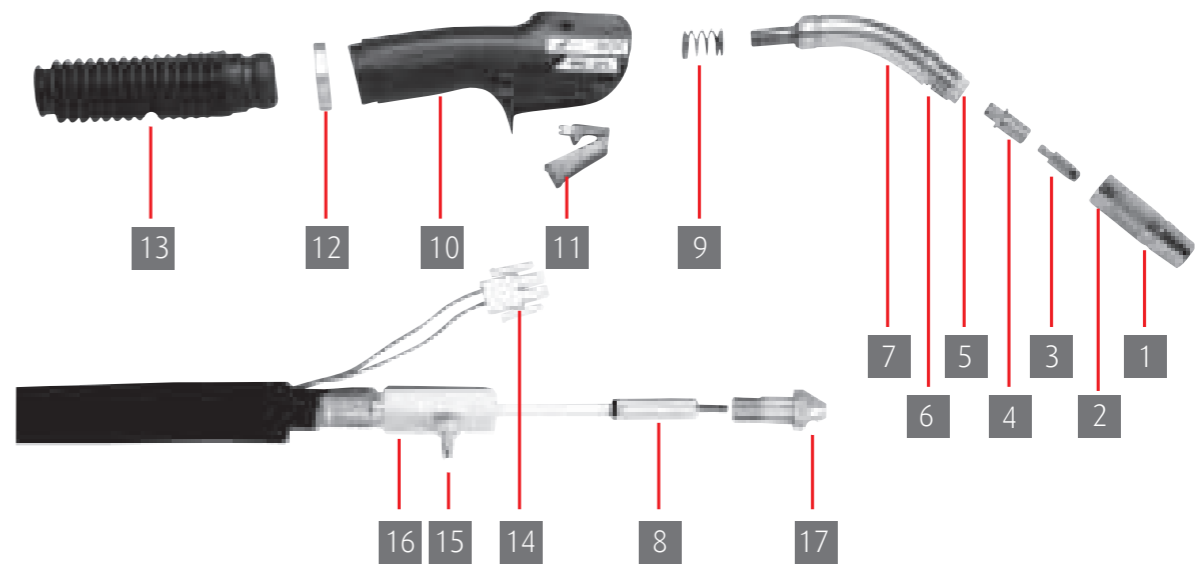
Part Details BOC MIG 190C - Internal Zoom



| NO. | PART NO. | DESCRIPTION |
|-----|----------|--------------------------------|
| 13 | 9541084 | MOTOR / GEARBOX WIRE FEEDER |
| 14 | 9542001 | CHASSIS WIRE FEEDER |
| 15 | 9592110 | FASTENING SCREW M4 FEED ROLLER |
| 16 | 9542004 | REAR GUIDE TUBE COOP |

Parts Details BOC MG 17i Torch Gun

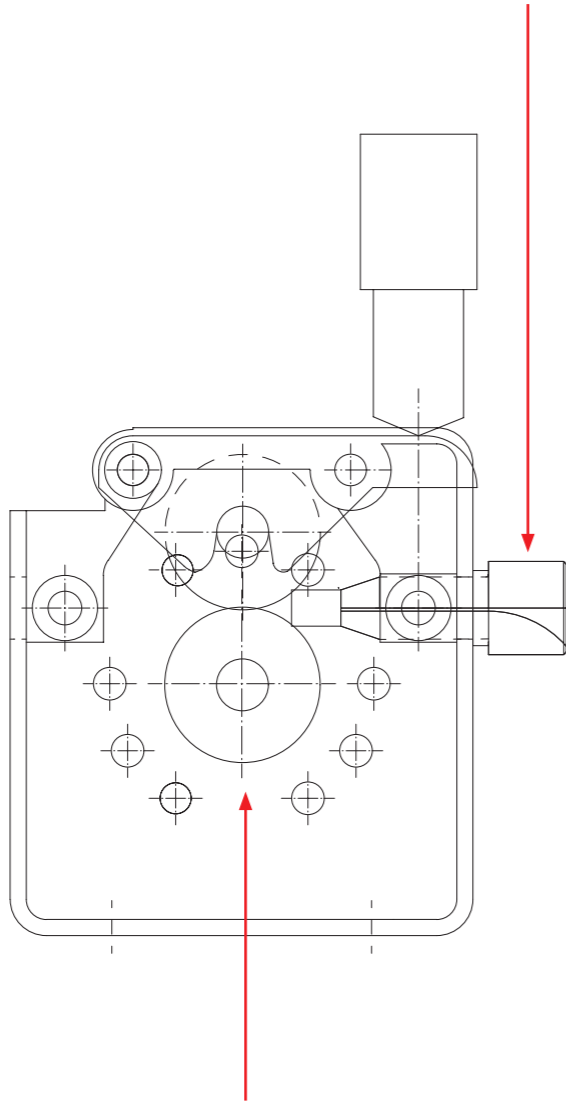
MG17i (Part No. BMGI702/3)



| NO. | PART NO. | DESCRIPTION |
|-----|----------|--|
| 1 | B9580101 | GAS NOZZLE - STANDARD |
| | B4113470 | GAS NOZZLE - SPOT |
| | B958010E | GAS NOZZLE - THICK WALL |
| 2 | B9591010 | INSULATING BRUSH |
| 3 | B9876634 | CONTACT TIP 0.6MM/M6 |
| | B9876635 | CONTACT TIP 0.8MM/M6 |
| | B9876633 | CONTACT TIP 0.9MM/M6 |
| | B9876636 | CONTACT TIP 1.0MM/M6 |
| | B9876637 | CONTACT TIP 1.2MM/M6 |
| 4 | B9580173 | CONTACT TIP ADAPTER |
| 5 | B9591079 | INSULATING RING |
| 6 | B4275240 | LOCKING SPRING |
| 7 | B4153040 | GOOSENECK 45 DEGREE |
| 8 | B4188579 | LINER-STEEL 0.6-0.8MM/3M (WHITE) |
| | B4188589 | LINER-STEEL 0.9-1.2MM/3M (RED) |
| | B4302100 | LINER-DL TEFLON 0.8-1.6MM/3M AL (SILVER) |
| | B4302730 | LINER-DL TEFLON 0.8-1.0MM/3M SS (SILVER) |
| 9 | B4276270 | SWIVEL SPRING |
| 10 | B4305230 | HANDLE |
| 11 | B4290120 | TRIGGER SWITCH |
| 12 | B4302790 | RETAINING RING |
| 13 | B3146300 | CABLE SUPPORT |
| 14 | B9770456 | TRIGGER PLUG |
| 15 | B4291250 | GAS HOSE NIPPLE |
| 16 | B4290960 | CONNECTION BLOCK |
| 17 | B4290970 | TAPERED POSITIONING NUT (TLP) |

Parts Details Wirefeeder

| WIRE. | PART NO. | DIAMETER |
|----------------|----------|-----------|
| FE SS MC FC AL | B9542004 | 0.6-1.2MM |



| WIRE | FEED ROLL TYPE | 0.6MM/0.8MM | 0.9-1.0MM/1.2MM | 1.4M/1.6MM |
|-------|----------------|-------------|-----------------|------------|
| FE SS | PLAIN | B9483070 | B9483070 | - |
| FC | KNURLED | B9483073 | B9483073 | - |
| AL | U-GROOVE | - | - | B9483072 |

Troubleshooting BOC MIG 170P/190C

General Maintenance

Maintenance of a BOC MIG power source will normally consist of general cleaning of the unit with a soft brush and a vacuum cleaner, and checking of wearing for parts like switches, connectors, potentiometers and fuses.

NOTE: If you use compressed air for cleaning, there is a risk that dirt is packed even more tightly into gaps of connectors and components, so be careful with those parts!

Maintenance of the wire feeder and MIG torch will normally consist of general cleaning and changing of consumable parts such as the contact tip, the contact tip adapter, the gas nozzle, the wire conduit, feeding rolls, guide tubes and the gear wheel.

The number of machines in stock will determine to what extent consumable and spare parts will be stocked.

WARNING

Watch out for the mains voltage! Disconnect the power source from the mains voltage before removing cover plates or any testing or measurement and before troubleshooting, look for signs for over-heating, fractures and damages from internal components and power semiconductors.

| Fault Description | Possible Cause | Solution |
|---|---|---|
| The welding quality is poor: <ul style="list-style-type: none">- The arc is not stable- There is increased spatter- The arc start is poor- There is not enough arc current | <ul style="list-style-type: none">a. One phase is missing from the input power supplyb. There is a lack of shielding gas or the wrong type of gas is being usedc. The gas hose of the torch is leaking or the connection is loosed. The on/off switch or the contactor is faultye. The main transformer is faultyf. There is a broken diode in the rectifier | <ul style="list-style-type: none">a. Check all phases from the terminal block. Change the mains fuse if required or tighten the mains cableb. Check the operation of the solenoid valvec. Check and repair the MIG torch, or replace if requiredd. Measure the output of the on/off switch. If it is OK, check the contactore. Check that the voltages are symmetrical on the secondary of the main transformer. The voltage value depends on the machine type and the settings of the step switchesf. Check and replace the rectifier if required |
| The welding stops intermittently or there are some occasional disturbances during welding | <ul style="list-style-type: none">a. The switch on the MIG torch is faultyb. The connection in the control wires of the torch or in the connector block are faulty | <ul style="list-style-type: none">a. Check and replace the switch if requiredb. Check the control wires and the connectors and repair if required |
| The machine is overheating because the fan does not start | <ul style="list-style-type: none">a. The fan or the control board is faulty | <ul style="list-style-type: none">a. Check the 24V DC voltage from the fan connector X3/3 and X3/4. If it is OK, replace the fan. If it is not, replace the control board |
| The wire feed unit does not work | <ul style="list-style-type: none">a. The 8amp fuse has blownb. The motor is faultyc. The control voltages for the control board are inactive | <ul style="list-style-type: none">a. Replace the 8amp fuse. If the fuse burns once more, the control board is faultyb. Check the control voltage (max. c 24V DC) for the motor and connectors X4/12 - X4/13 on the control board. If the control voltage is correct, the control board is in order. Replace the motorc. Check the voltages, connectors X3/2 - X3/8 and X3/10 - X3/9 on the control board. If the voltages are incorrect, the transformer is faulty |

Troubleshooting BOC MIG 170P/190C

| Fault Description | Possible Cause | Solution |
|--|--|---|
| The solenoid valve is inactive | a. The solenoid valve or the control board is faulty | a. Check the 24V DC from the connector X3/5 and X3/6. Replace the control board or solenoid valve |
| The wire feed speed set value cannot be adjusted | a. The potentiometer is faulty | a. Check and replace the 10K_ set value potentiometer if required |

Parts List BOC MIG 170P

| NO. | PART NO. | DESCRIPTION |
|-----------------|-----------|---|
| INTERNAL | | |
| 1 | 4292610 | CONTROL BOARD FOR SERIAL NUMBERS UP TO 1222675 |
| 1.1 | SP000437 | CONTROL BOARD FOR SERIAL NUMBERS OVER 1222675 |
| 1.2 | 9772526 | FUSE 8A (NOT SHOWN) |
| 2 | 9755671 | CAPACITOR |
| 3 | 4292420 | INSULATION / CAPACITOR |
| 4 | 9750158 | RECTIFIER |
| 5 | 3144920 | CHOKE |
| 6 | 954421501 | COOLING FAN |
| 7 | 9754141 | POTENTIOMETER WIRE FEED (NOT SHOWN) |
| 8 | 4291990 | PTC RESISTOR |
| 9 | 3145410 | TRANSFORMER |
| 10 | 956300201 | SOLENOID VALVE |
| 11 | 9568911 | HOSE CONNECTOR INTERNAL TO SOLENOID (NOT SHOWN) |
| 12 | 9370157 | HOSE |
| WIRE FEED | | |
| 13 | 9541084 | MOTOR / GEARBOX WIRE FEEDER |
| 14 | 9542001 | CHASSIS WIRE FEEDER |
| 15 | 9592110 | FASTENING SCREW M4 FEED ROLLER |
| 16 | 9542004 | REAR GUIDE TUBE COOP |
| 17 | 4289880 | WIRE HUB KIT (ITEMS 18-25) |
| 18 | 2062070 | HUB FOR WIRE REEL |
| 19 | 3133500 | CLAMP |
| 20 | 4267970 | BRAKE PIECE |
| 21 | 4267560 | WASHER D 47/17 |
| 22 | 9420116 | WASHER M16 DIN 125 A ZN |
| 23 | 4270940 | PRESS SPRING |
| 24 | 9425216 | WASHER D16 |
| 25 | 4265820 | CLAMPING UNIT M16 |
| PANELS | | |
| 26 | 3145440 | SIDE PLATE RIGHT |
| 27 | 3145430 | DOOR PLATE |
| 28 | 9549064 | SLIDE LOCK |
| 29 | 2062900 | PLASTIC HANDLE |
| CONTROLS | | |
| 30 | 9775728 | THERMAL OVERLOAD LIGHT |
| 31 | 9761221 | ON/OFF SWITCH |
| 32 | 9759111 | KNOB D36 WIRE SPEED |
| 33 | 9760313 | VOLTAGE SWITCH |
| 34 | 9771509 | MACHINE SOCKET DIX 25 |
| 35 | 9568913 | HOSE CONNECTOR |
| CABLES & CLAMPS | | |
| 36 | BOC10101 | WORK CLAMP |
| 38 | 7901220 | WORK LEAD 16 MM2 3M |
| 39 | 9791650 | TORCH INLET RING |

Parts List BOC MIG 190C

| NO. | PART NO. | DESCRIPTION |
|-----------------|-----------|---|
| INTERNAL | | |
| 1 | 4292610 | CONTROL BOARD |
| 1.1 | 9772526 | FUSE 8A (NOT SHOWN) |
| 2 | 9755671 | CAPACITOR |
| 3 | 4292420 | INSULATION / CAPACITOR |
| 4 | 9750157 | RECTIFIER |
| 5 | 4291990 | PTC RESISTOR |
| 6 | 3144920 | CHOKE |
| 7 | 954421501 | COOLING FAN |
| 8 | 9754141 | POTENTIOMETER WIRE FEED & TIMER (NOT SHOWN) |
| 9 | 3145410 | TRANSFORMER |
| 10 | 956300201 | SOLENOID VALVE |
| 11 | 9568911 | HOSE CONNECTOR INTERNAL TO SOLENOID (NOT SHOWN) |
| 12 | 9370157 | PLASTIC HOSE 5/8,2 |
| WIRE FEED | | |
| 13 | 9541084 | MOTOR / GEARBOX WIRE FEEDER |
| 14 | 9542001 | CHASSIS WIRE FEEDER |
| 15 | 9592110 | FASTENING SCREW M4 FEED ROLLER |
| 16 | 9542004 | REAR GUIDE TUBE COOP |
| 17 | 4289880 | WIRE HUB KIT (ITEMS 18-25) |
| 18 | 2062070 | HUB FOR WIRE REEL |
| 19 | 3133500 | CLAMP |
| 20 | 4267970 | BRAKE PIECE |
| 21 | 4267560 | WASHER D 47/17 |
| 22 | 9420116 | WASHER M16 DIN 125 A ZN |
| 23 | 4270940 | PRESS SPRING |
| 24 | 9425216 | WASHER D16 |
| 25 | 4265820 | CLAMPING UNIT M16 |
| PANELS | | |
| 26 | 3145440 | SIDE PLATE RIGHT |
| 27 | 3145430 | DOOR PLATE |
| 28 | 9549064 | SLIDE LOCK |
| 29 | 2062900 | HANDLE |
| CONTROLS | | |
| 30 | 9775728 | THERMAL OVERLOAD LIGHT |
| 31 | 9761221 | ON/OFF SWITCH |
| 32 | 9760315 | VOLTAGE SWITCH |
| 33 | 9759111 | KNOB D36 WIRE SPEED |
| 34 | 9791650 | INLET RING |
| 35 | 9547105 | REAR WHEEL |
| 36 | 9568913 | HOSE CONNECTOR |
| 37 | 9547770 | WHEEL, CASTOR |
| 38 | 9761350 | 2T / SPOT / 4T SWITCH |
| 39 | 9771509 | MACHINE SOCKET DIX 25 |
| CABLES & CLAMPS | | |
| 40 | BOC10101 | WORK CLAMP |
| 41 | 7901220 | WORK LEAD 16 MM2 |
| 42 | 9425220 | LOCKING RING SHAFT D 20 |