



**2000 series**

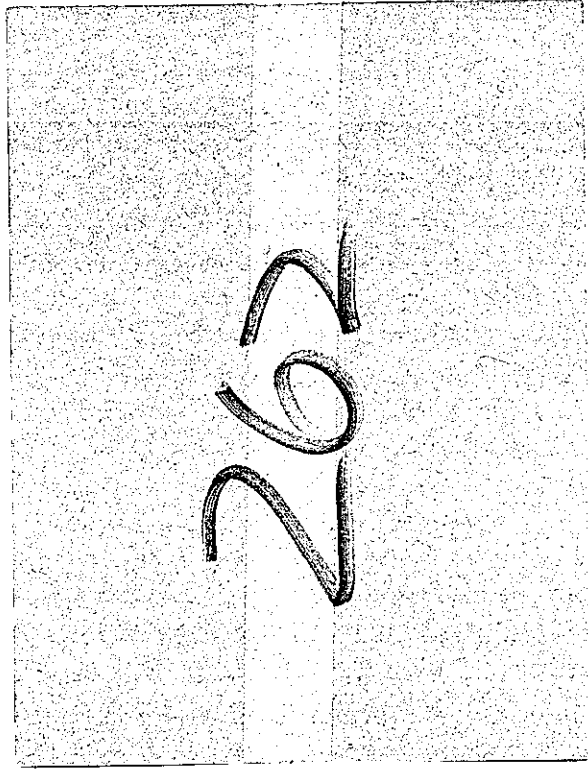
**V85A**

Serial No: E002/0001-Up

Issue 2

June 89

**C20160/262**



2000

Series

Serial No. E082-UP

Issue 2

June .89

A	CONT. MODS. NOTES	SECT. ALL. I	CRANK CASE & CYLS.	RUNNING GEAR	CYL. HEADS	VALVES 180° 2nd	VALVES DE- LY- 2nd	UN- LOAD
B	EXTERN. COMPS.	INST. PANEL	GOVERNOR	FLANGE MT. UNIT	RECEIVER MT. UNIT	X	X	X
C								
D								
E								
F								
G								
1								
2								
3								
4								
5								
6								
7								
8								
9								
10								
11								
12								
13								
14								

# A1

## CONTENTS

V85A

Serial Number: E002/0001-Up February 1971

<b>Description</b>	<b>Frame</b>
Modifications/Notes	A2
Sectional Arrangement	A3
Crankcase & Cylinders	A4, A5
Running Gear	A6, A7
Cylinder Heads	A8, A9
Valves	A10 — A13
Unloader	A14
External Components	B1, B2
Instrument Panel	B3
Governor	B4, B5
Flange Mounted Unit	B6, B7
Receiver Mounted Unit	B8, B9

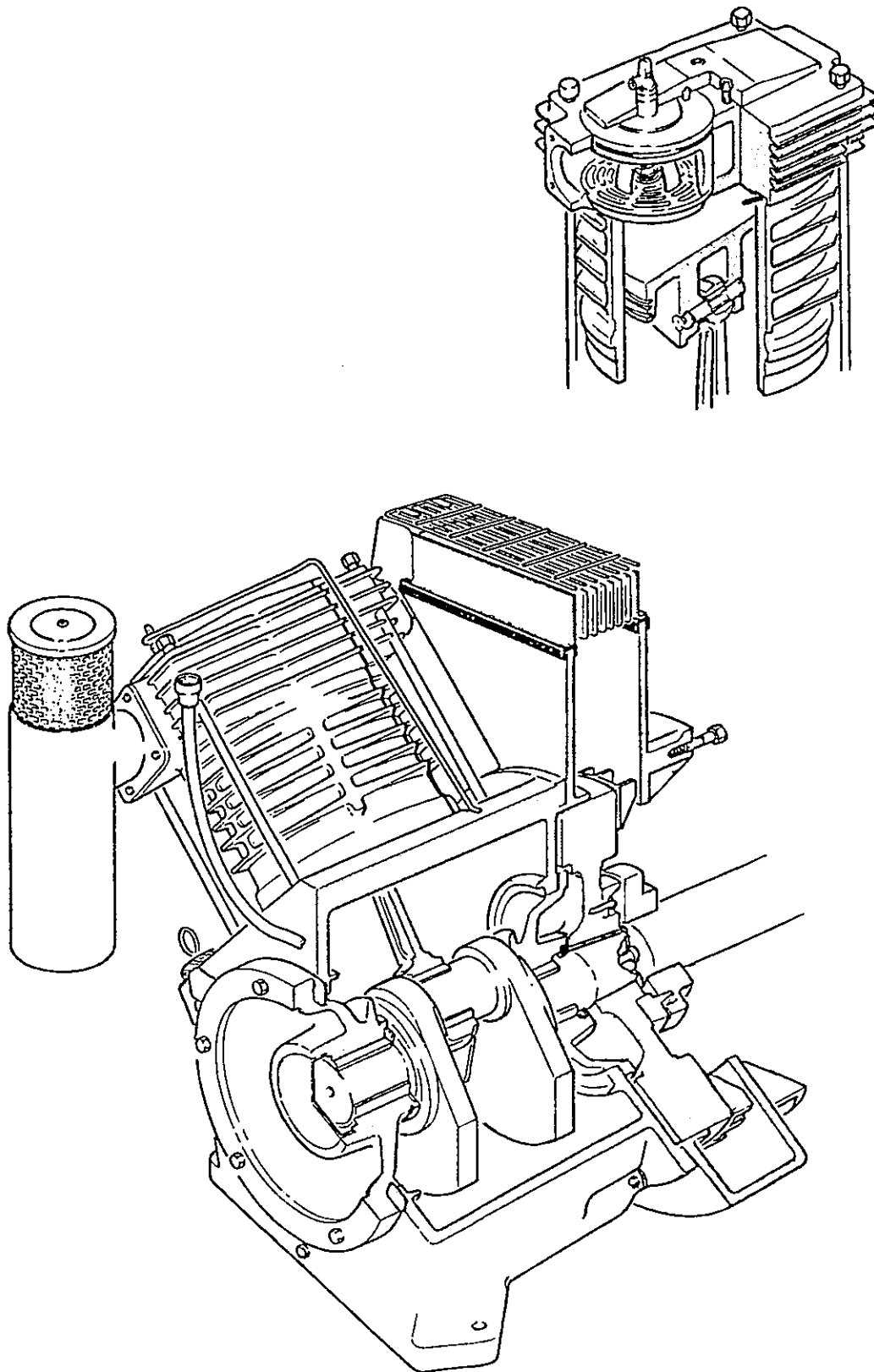
# A2

## MODIFICATIONS/NOTES

### NOTE

Part Number changes are identified by a number in brackets (2) to the left of the Reference Number. This number indicates the issue when the change was introduced.

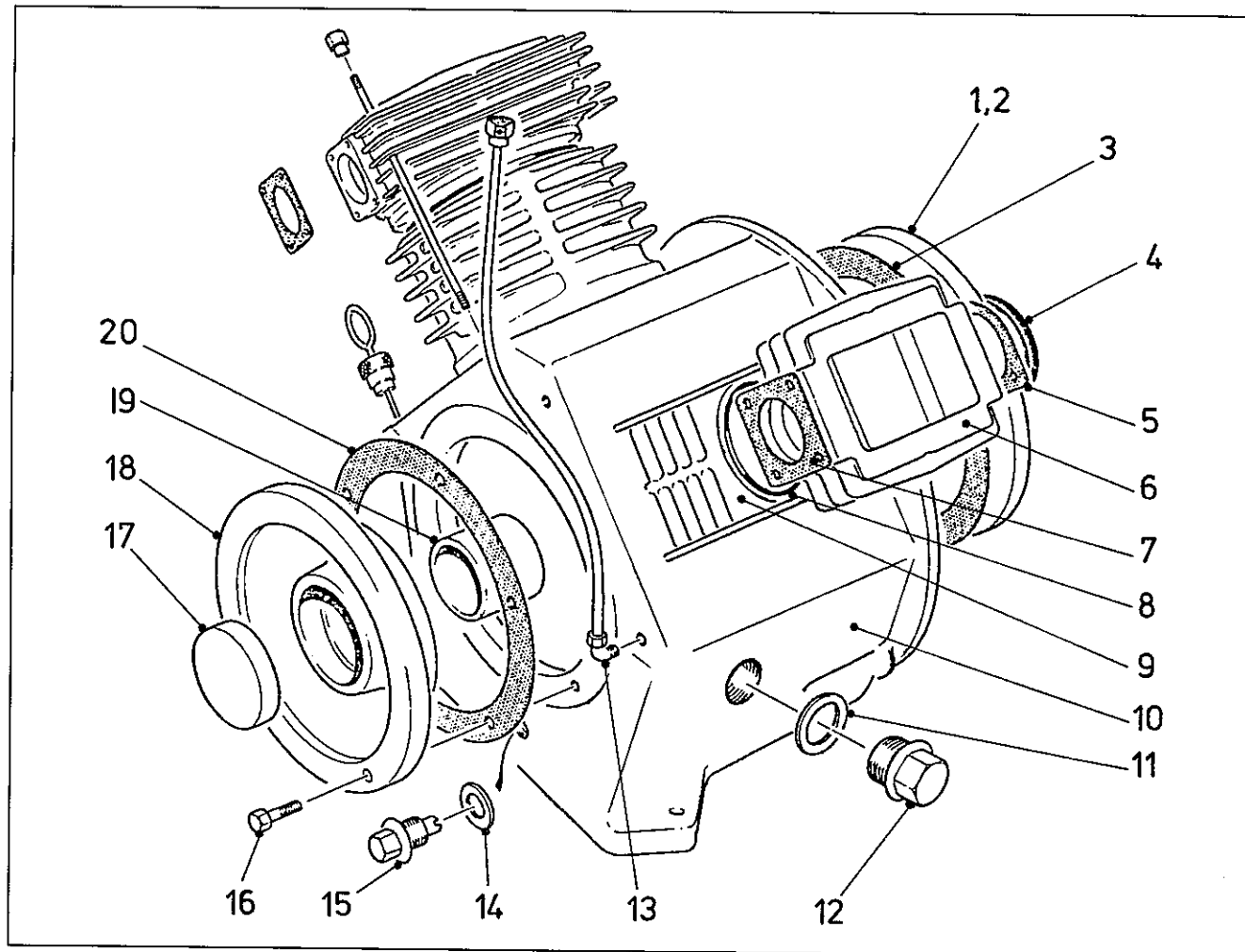
# A3



SECTIONAL ARRANGEMENT

# A4

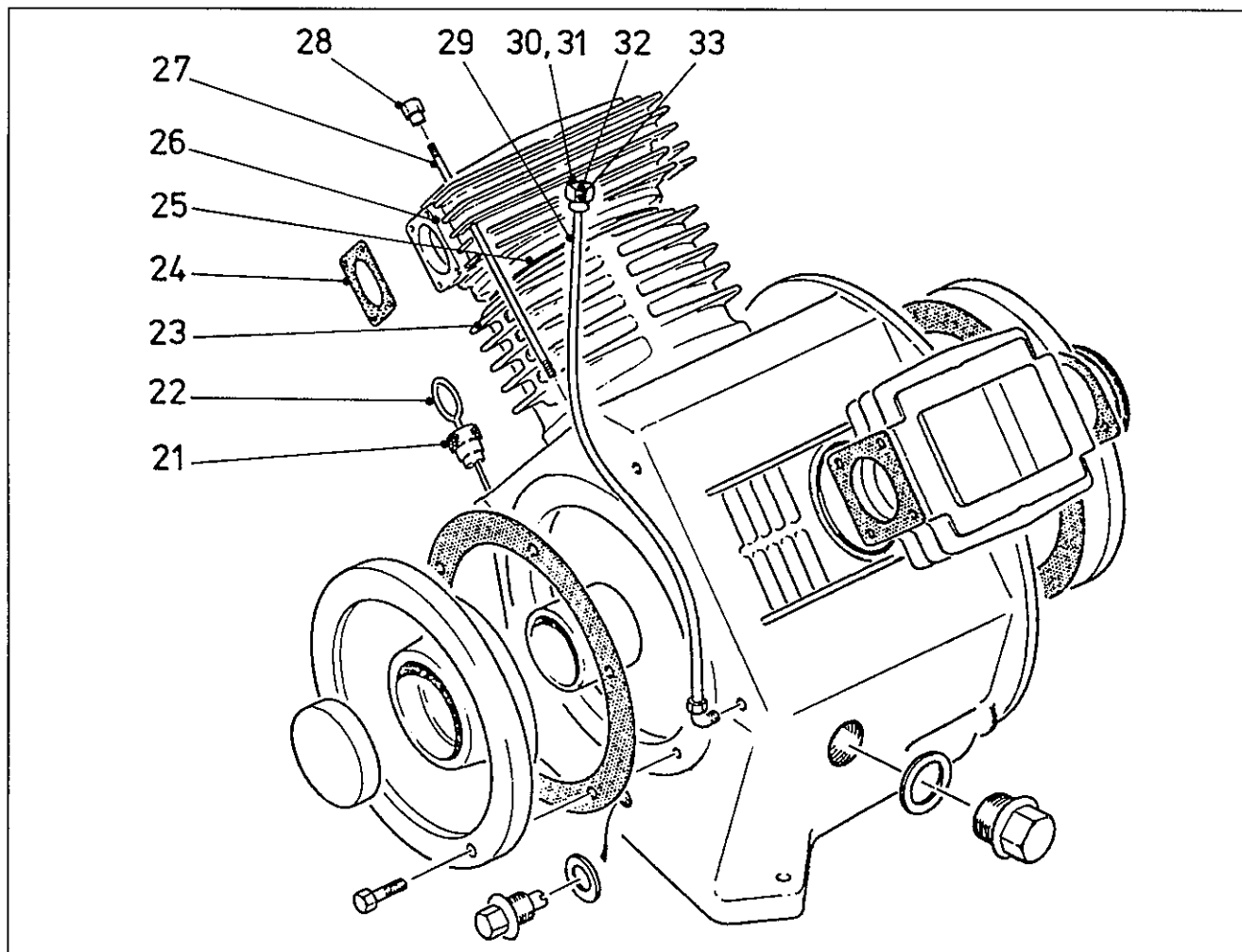
## CRANKCASE & CYLINDERS



Ref. No.	Part No.	Qty	Description
1	C11400/59	1	Housing, Bearing (Ref. Nos. 2, 3, 4 & 19)
2	C11400/26	1	Housing, Bearing
3	C11400/53	1	Joint
4	A6450/95	2	'O' Ring
5	C11400/65	1	Joint
6	C11400/94A	1	Cylinder - Head - 2nd Stage
7	C11400/154	1	Joint
8	A10347/15	1	'O' Ring
9	C11400/166	1	Cylinder - 2nd Stage
10	C11400/3	1	Crankcase
11	A1442/7	1	Washer, Fibre
12	A3764/14	1	Plug
13	A10356/445	1	Stud
14	A1442/3	1	Washer, Fibre
15	A10300/22	1	Plug, Magnetic Drain
16	95000/257	12	Screw
17	C11400/101	1	Plug
18	C11400/26	2	Housing, Bearing
19	C11400/23	1	Bearing, Main
20	C11400/54	1	Joint

# A5

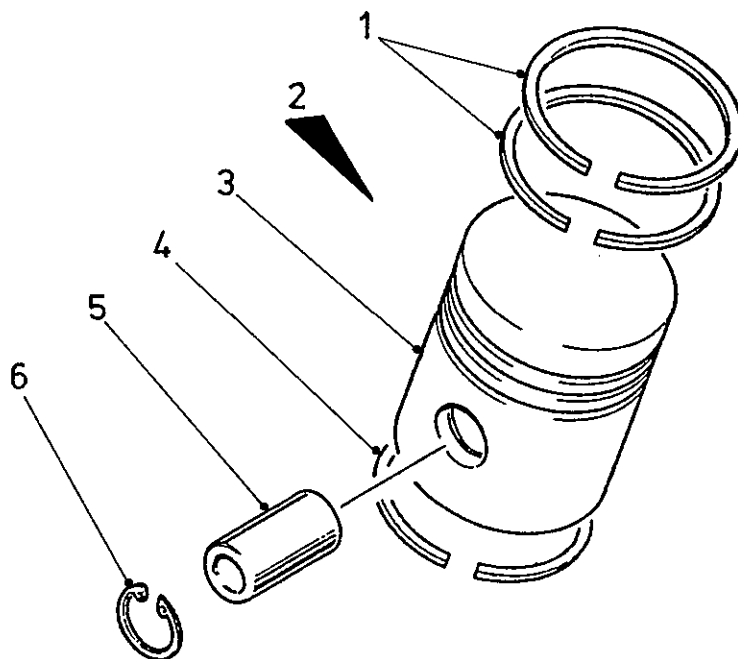
## CRANKCASE & CYLINDERS



Ref. No.	Part No.	Qty	Description
21	C11400/157	1	Plug
22	C11400/158	1	Dipstick
23	C11400/165	1	Cylinder - 1st Stage
24	C11400/153	1	Joint
25	A10347/18	1	'O' Ring
26	C11400/168	1	Cylinder - Head - 1st Stage
27	C11400/52	8	Studs
28	C11400/51	8	Nuts
29	C11400/232	1	Pipe
30	C11400/97	1	Breather (Ref. Nos. 29, 31, 32, 33)
31	C11359/233	1	Housing, Breather
32	C3938/3	1	Plate, Filter
33	A1413/441	1	Valve, Non-Return
<b>Non-Illustrated Parts</b>			
	C11400/179	As Req'd	Shim
	A1433/2	2	Washer
	A1442/8	1	Washer

# A6

## RUNNING GEAR



Ref. No.	Part No.	Qty	Description
1	—	2	Ring, Compression
2	C11400/56A	1	Piston - 2nd Stage (Ref. Nos. 1, 3, 4, 5 & 6)
3	—	1	Piston
4	—	1	Ring
5	C11400/38	2	Pin, Gudgeon
6	C11400/67	2	Circlip

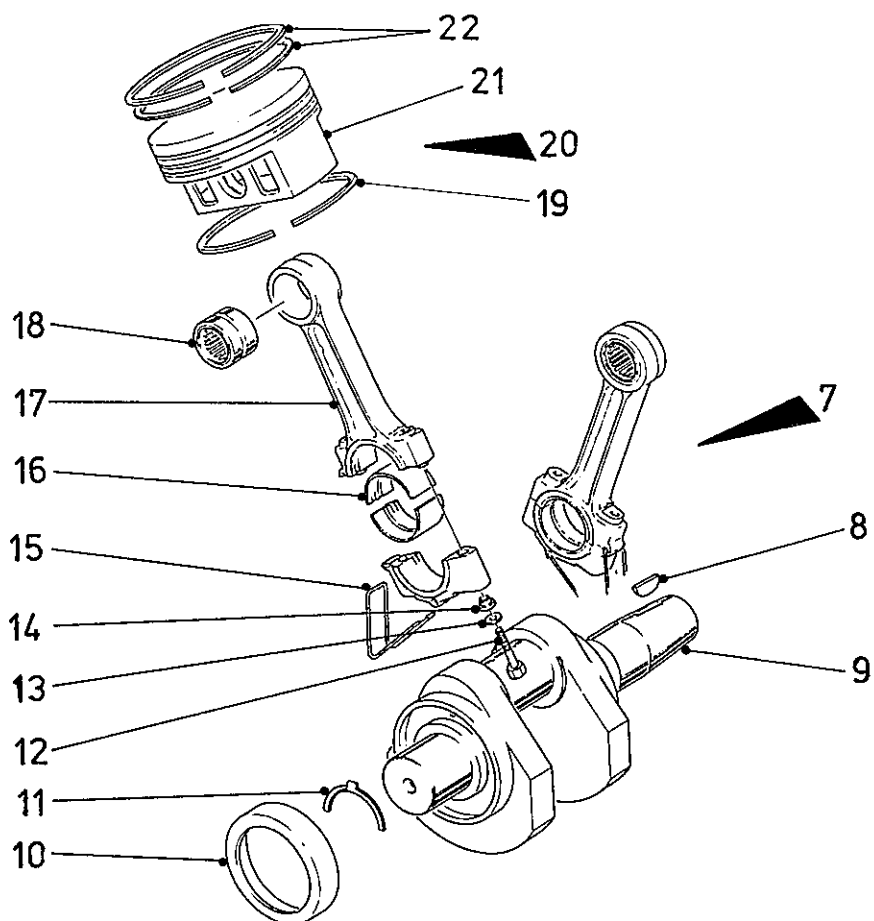
**Notes:**

Ref. Nos. 1 & 4 comprise Set of 2nd Stage Piston Rings, Part No. C11158/5577  
Ref. No. 3 not available separately.



# A7

## RUNNING GEAR

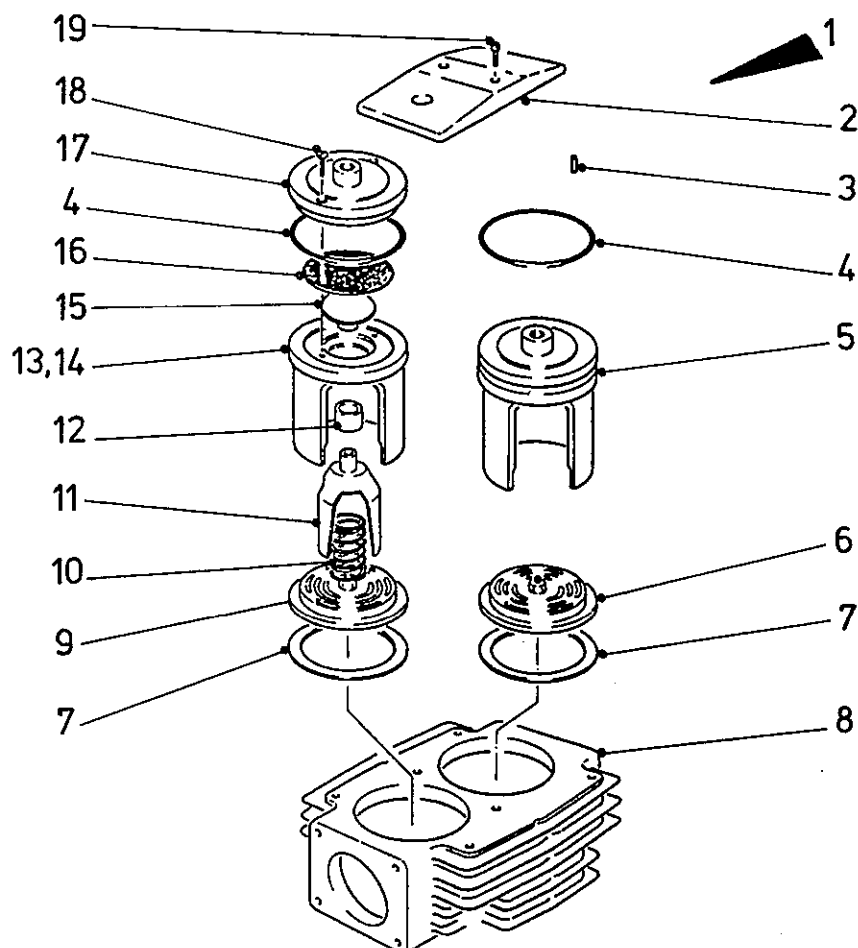


Ref. No.	Part No.	Qty	Description
7	C11400/150	2	Rod, Connecting (Inc. Ref. Nos. 12-18)
8	A3770/20	1	Key
9	C11400/169	1	Crankshaft (Inc. Ref. No. 10)
10	C11400/100	2	Cup, Oil
11	C11400/24	4	Washer, Thrust (Halves)
12	95006/175	4	Bolt
13	A6738/54	4	Washer
14	C11400/156	4	Bush
15	C11400/20	2	Dipper, Oil
16	C11400/197	4	Bearing, (Halves)
17	C11400/11	2	Rod, Connecting
18	A6419/75	2	Bearing
19	—	1	Ring
20	C11400/55A	1	Piston - 1st Stage (Ref. Nos. 5, 6, 19, 21 & 22)
21	—	1	Piston
22	—	2	Ring, Compression
	C11400/155		Bush, Dowel

### Notes:

Ref. Nos. 19 & 22 comprise Set of 1st Stage Piston Rings, Part No. C11158/5578  
 Ref. No. 21 not available separately.

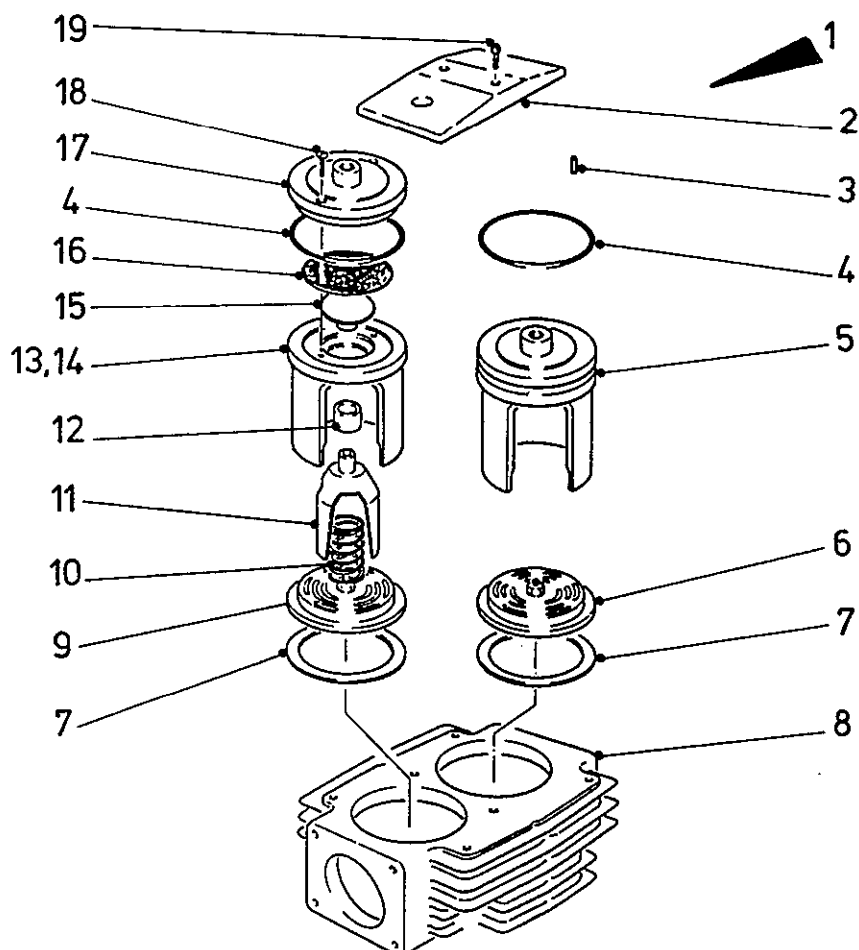
## CYLINDER HEAD - 1st STAGE



Ref. No.	Part No.	Qty	Description
1	C11400/168	1	Cylinder - Head
2	C11400/118	1	Plate, Retaining
3	A1475/100	1	Pin
4	A10347/11	2	'O' Ring
5	C11400/202	1	Lantern, Delivery Valve
6	C11552/8	1	Valve, Delivery
7	C11400/98	2	Joint
8	C11400/163	1	Cylinder - Head
9	C11552/7	1	Valve, Suction
10	C11360/94	1	Spring
11	C11400/86	1	Fork, Unloader
12	A10218/1	1	Bush
13	C11400/91	1	Lantern, Suction Valve (Ref. Nos. 4, 12, 14-18)
14	C11400/201	1	Lantern
15	C11359/84	1	Follower
16	C11359/310	1	Diaphragm
17	C11360/54	1	Cover, Lantern
18	C11400/81	1	Screw
19	95018/272	2	Screw

# A9

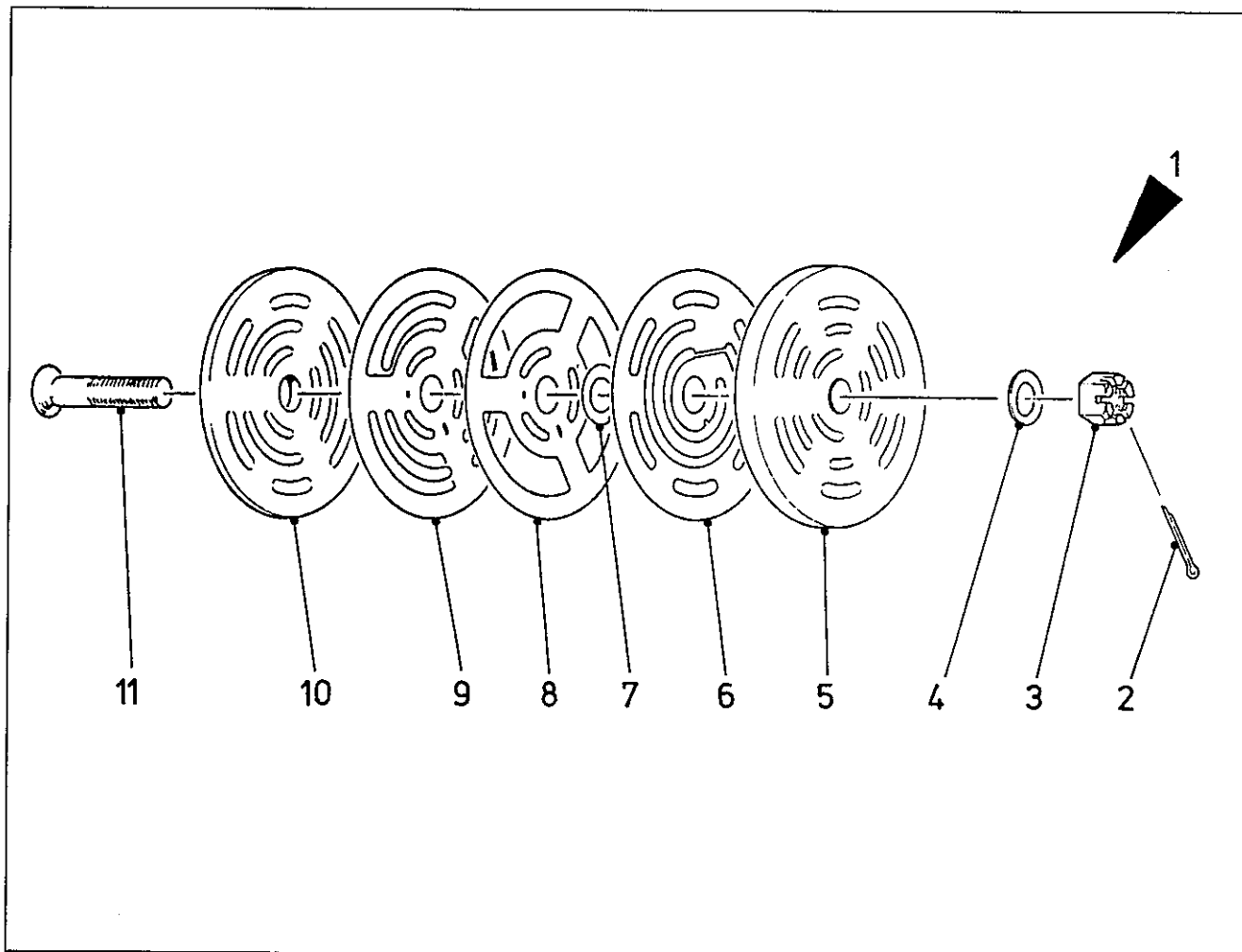
## CYLINDER HEAD - 2nd STAGE



Ref. No.	Part No.	Qty	Description
1	C11400/94A	1	Cylinder - Head
2	C11400/117	1	Plate, Retaining
8	C11400/30	1	Cylinder - Head
9	C11552/3	1	Valve, Suction
10	C11360/94	1	Spring
11	C11400/80	1	Fork, Unloader
12	A10218/1	1	Bush
13	C11360/60	1	Lantern, Suction Valve (Ref. Nos. 4, 12, 14-18)
14	C11400/203	1	Lantern
15	C11359/84	1	Follower
16	C11359/310	1	Diaphragm
17	C11360/54	1	Cover, Lantern
18	A6780/14	1	Screw
19	95018/272	2	Screw

# A10

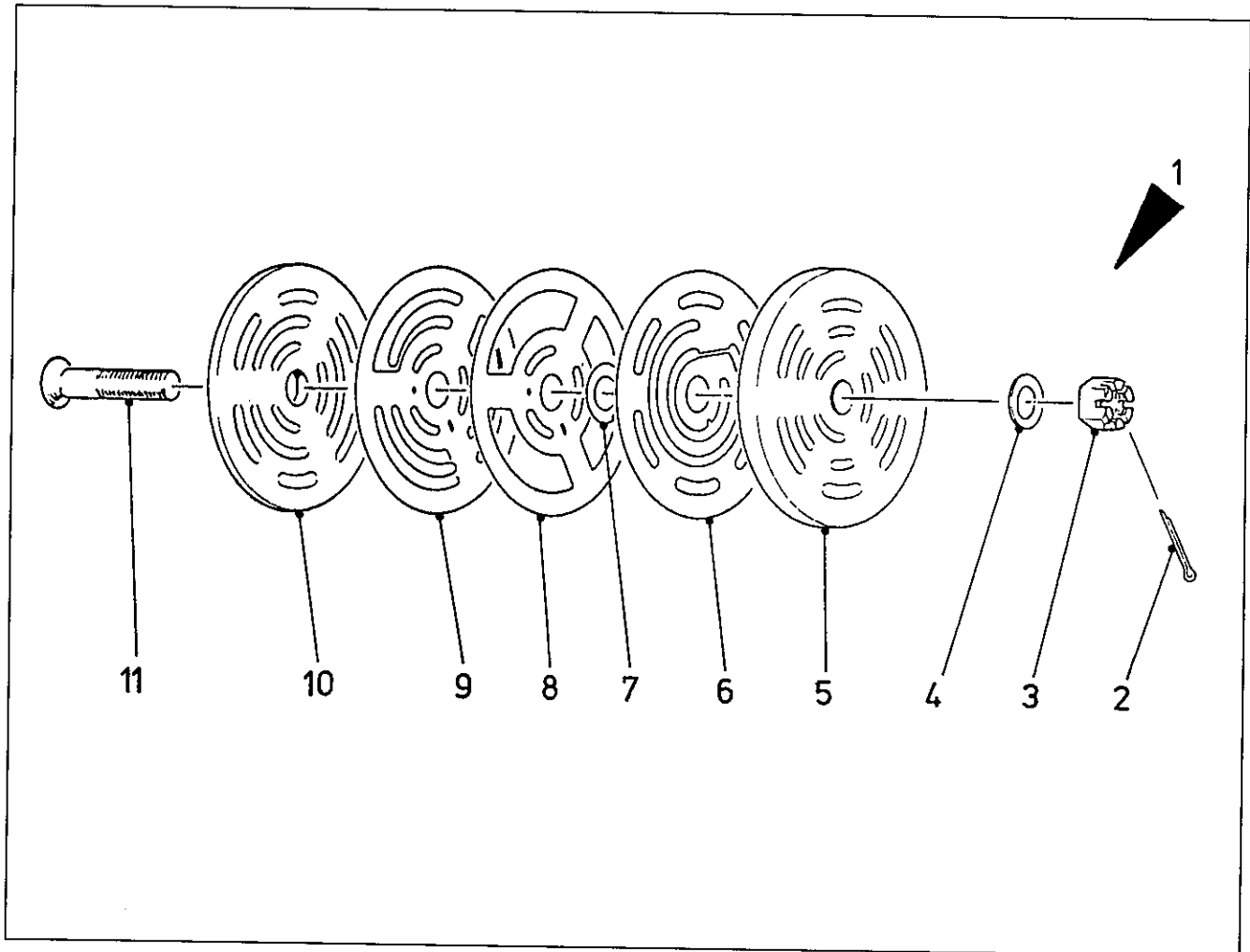
## SUCTION VALVE - 1st STAGE



Ref. No.	Part No.	Qty	Description
1	C11552/7	1	Valve
2	A3762/44	1	Pin, Split
3	95123/5	1	Nut
4	95149/16	1	Washer
5	C11552/142	1	Seat
—	C11552/149	1	Pin
—	C11552/125	1	Pin
6	C11552/144	1	Plate, Valve
7	C11552/150	2	Washer, Lift
8	C11552/145	1	Plate, Cushion
9	C11552/146	2	Plate, Spring
10	C11552/147	1	Guard, Valve
11	C11552/137	1	Bolt

# A11

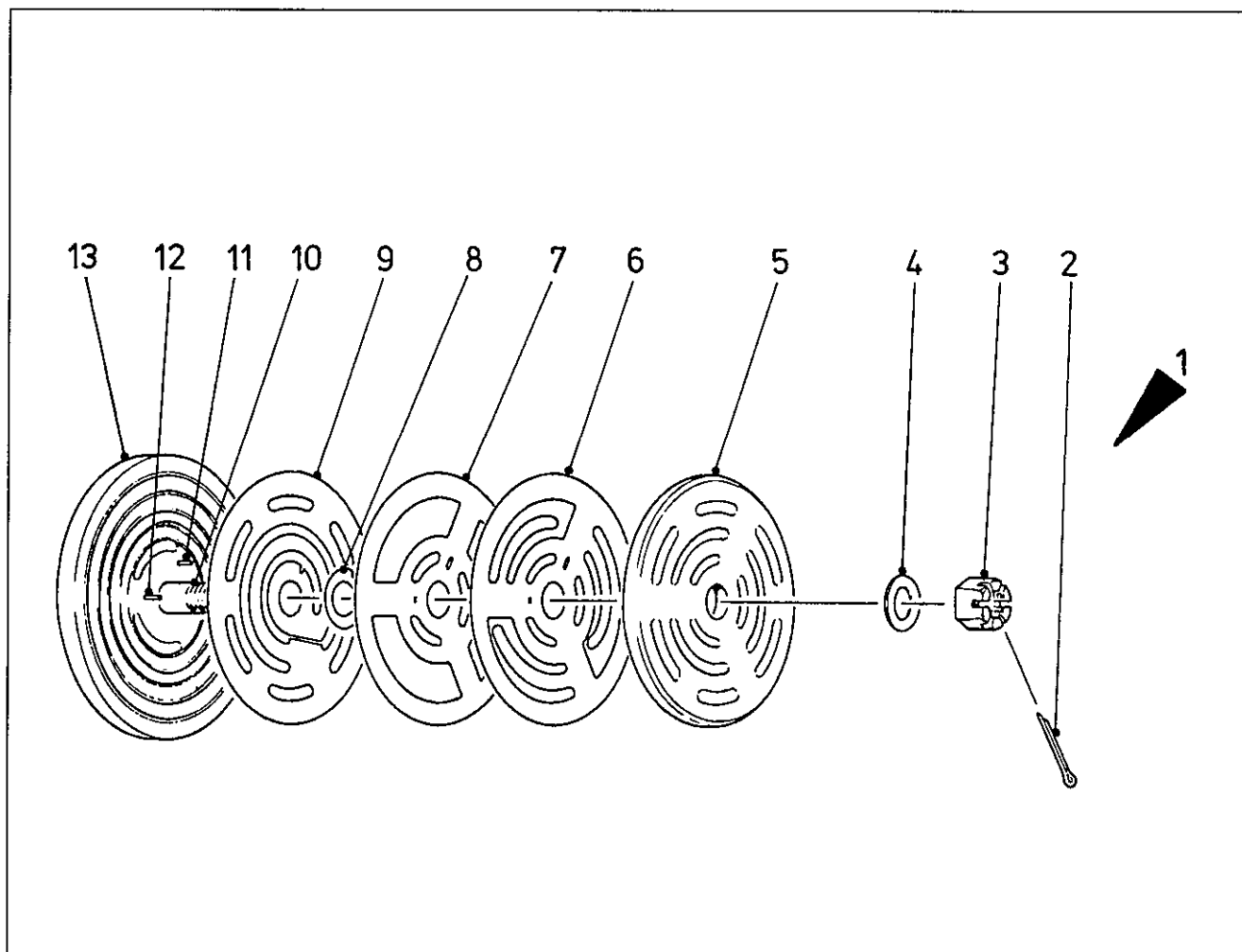
## SUCTION VALVE - 2nd STAGE



Ref. No.	Part No.	Qty	Description
1	C11552/3	1	Valve
2	A3762/44	1	Pin, Split
3	95123/4	1	Nut
4	95149/15	1	Washer
5	C111552/134	1	Seat
—	C11552/124	1	Pin
—	C11552/125	1	Pin
6	C11552/157	1	Plate, Valve
7	C11552/153	1	Washer, Lift
8	C11552/115	1	Plate, Cushion
9	C11552/117	3	Plate, Spring
10	C11552/107	1	Guard, Valve
11	C11552/110	1	Bolt

# A12

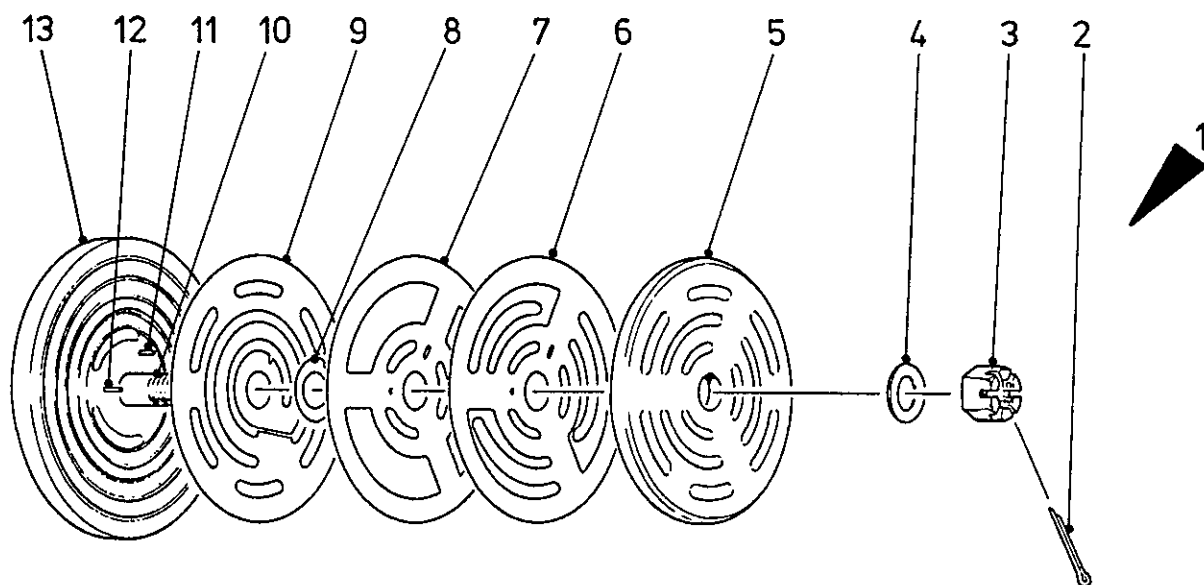
## DELIVERY VALVE - 1st STAGE



Ref. No.	Part No.	Qty	Description
1	C11552/8	1	Valve
—	C11552/151	1	Peg
2	A3762/44	1	Pin, Split
3	95123/5	1	Nut
4	95149/16	1	Washer
5	C11552/148	1	Guard, Valve
6	C11552/154	2	Plate, Spring
7	C11552/145	1	Plate, Cushion
8	C11552/150	2	Washer, Lift
9	C11552/144	1	Plate, Valve
10	C11552/162	1	Bolt, Centre
11	C11552/125	1	Pin
12	C11552/149	1	Pin
13	C11552/143	1	Seat

# A13

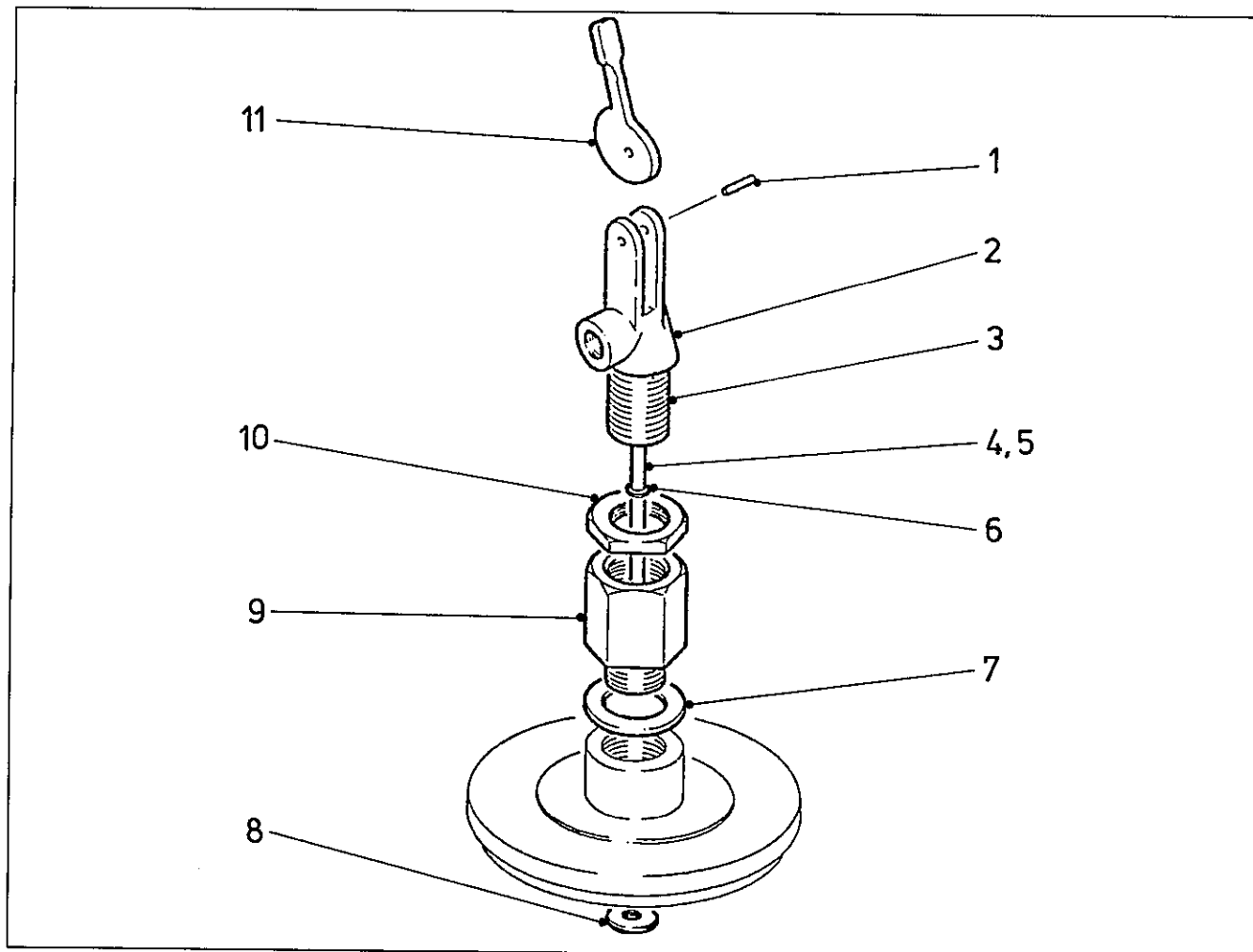
## DELIVERY VALVE - 2nd STAGE



Ref. No.	Part No.	Qty	Description
1	C11552/4	1	Valve
—	C11552/132	1	Peg
2	A3762/44	1	Pin, Split
3	95123/4	1	Nut
4	95149/115	1	Washer
5	C11552/105	1	Guard, Valve
6	C11552/118	3	Plate, Spring
7	C11552/115	1	Plate, Cushion
8	C11552/153	1	Washer, Lift
9	C11552/157	1	Plate, Valve
10	C11552/161	1	Bolt, Centre
11	C11552/125	1	Pin
12	C11552/124	1	Pin
13	C11552/133	1	Seat

# A14

## UNLOADER

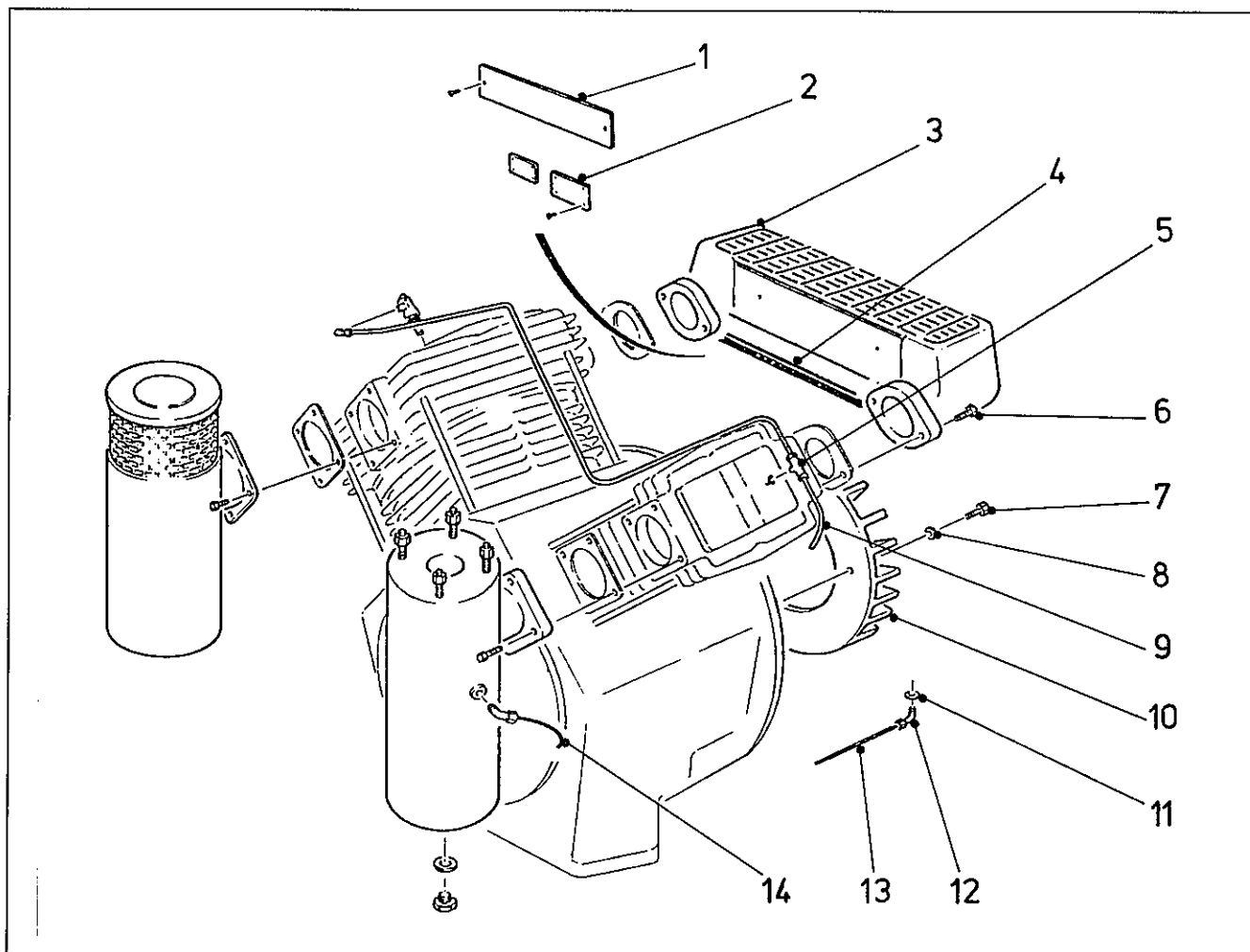


Ref. No.	Part No.	Qty	Description
1	C10737/21	1	Pin
2	C10728/29	1	Unloader, Hand
3	C10578/70	1	Body
4	C11359/341	1	Stem, Unloader (Inc. Ref. Nos 5 & 8)
5	C11359/339	1	Spindle
6	A10347/6	1	'O' Ring
7	A1442/3	1	Washer, Fibre
8	C11359/340	1	Unloader, Head
9	C11359/207	1	Adaptor
10	A3768/3	1	Nut
11	C3615/23	1	Cam



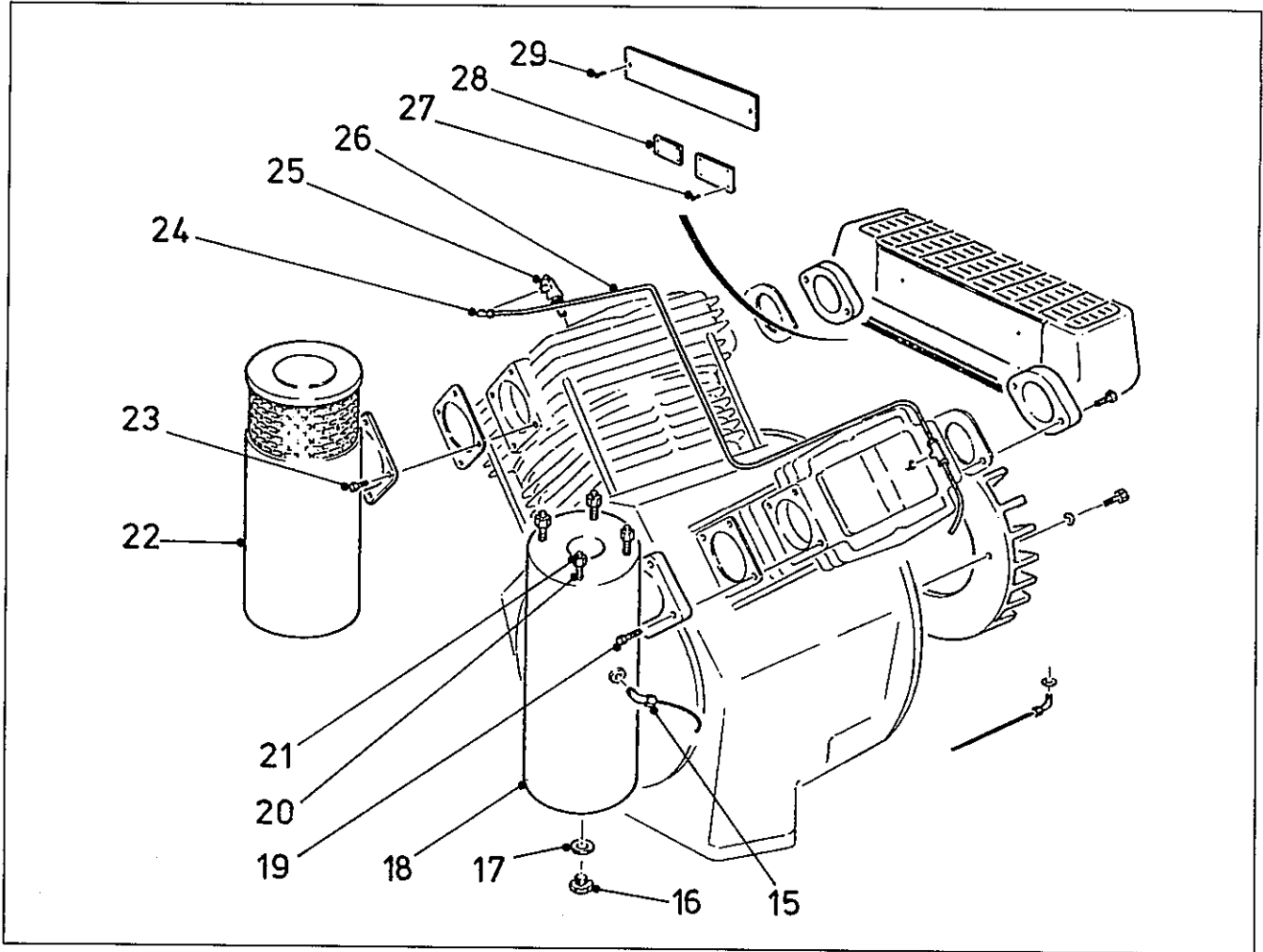
# B1

## EXTERNAL COMPONENTS



Ref. No.	Part No.	Qty	Description
1	C4074/29	1	Nameplate
2	C4074/27	1	Plate, Specification
3	C11159/73	1	Intercooler
4	C11400/76	1 m	Strip, Seal
5	A10356/578	1	Tee
6	95000/286	4	Screw
7	95000/229	4	Screw
8	A6738/52	4	Washer
9	C11353/219	1	Pipe
10	C11400/17	1	Fan
11	A1442/1	1	Washer
12	C11400/200	1	Coupling
13	C11353/262	1	Pipe
14	C11353/261	1	Pipe (Free Standing Unit)
14	C11343/267	1	Pipe (Receiver Mounted Unit)

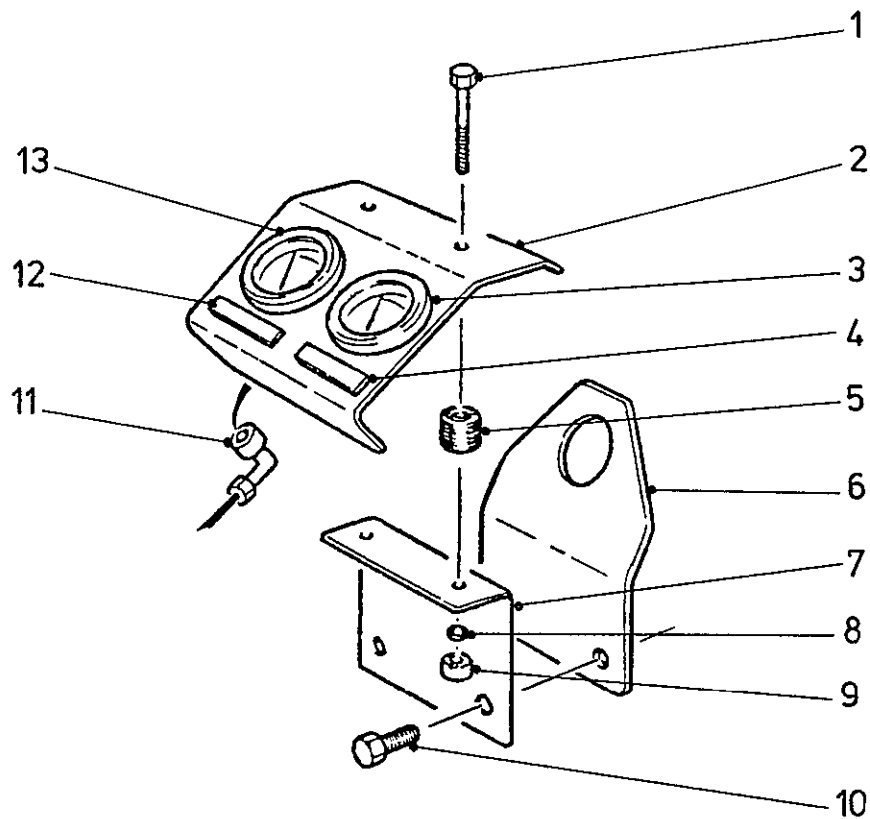
## EXTERNAL COMPONENTS



Ref. No.	Part No.	Qty	Description
15	C11400/199	1	Coupling
16	C10589/1	1	Plug
17	A1442/11	1	Washer
18	C11400/69	1	Vessel, Pulsation
19	95000/284	4	Screw
20	A4331/9	4	Stud
21	A4322/8	4	Nut
22	C11400/183	1	Filter/Silencer
23	95000/282	4	Screw
24	A10356/31	1	Coupling
25	C11359/217	1	Unloader
26	C11353/218	1	Pipe
27	A1441/7	8	Screw, Drive
28	A1401/20	1	Nameplate
29	A6455/86	2	Rivet
—	A10300/361	1	Element, Filter

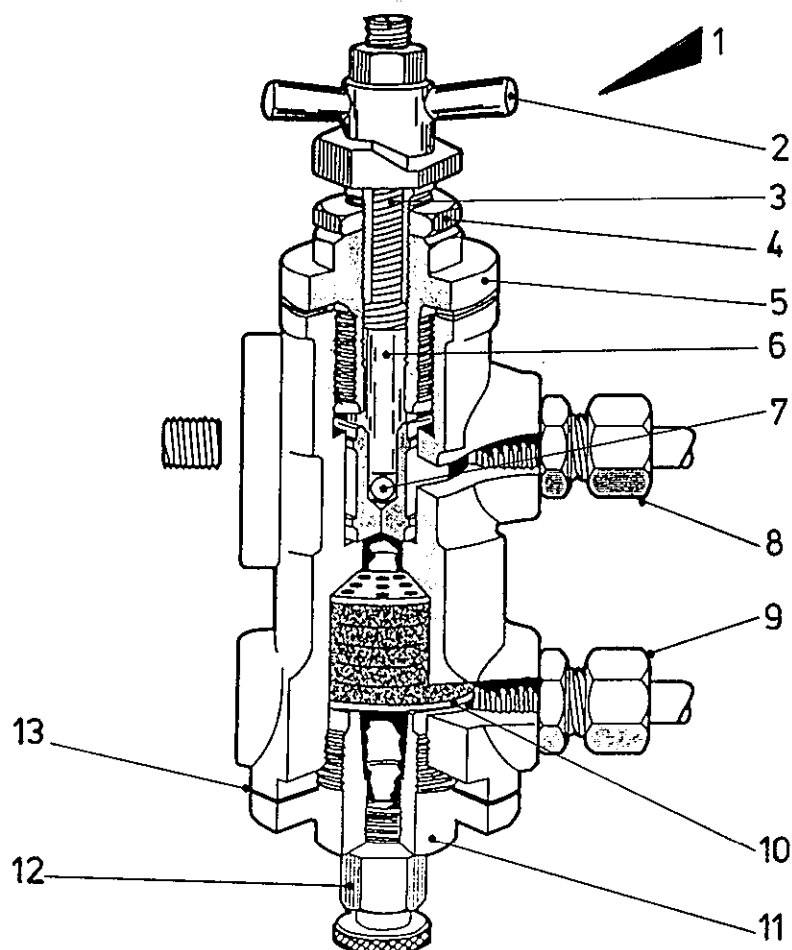
# B3

## INSTRUMENT PANEL



Ref. No.	Part No.	Qty	Description
1	95006/126	2	Bolt, Head
2	C11400/71	1	Panel, Instrument
3	A3777/54	1	Gauge, Air Pressure (0-13 bar)
4	C4029/370	1	Label - 2nd Stage
5	A1413/280	2	Rubber, Bush
6	C11400/151	1	Plate, Lifting
7	C11400/72	1	Bracket
8	A6738/52	2	Washer, Shakeproof
9	95111/4	2	Nut
10	95000/283	2	Screw
11	A10356/377	1	Elbow
12	C4029/369	1	Label - 1st Stage
13	A3777/53		Gauge, Oil Pressure

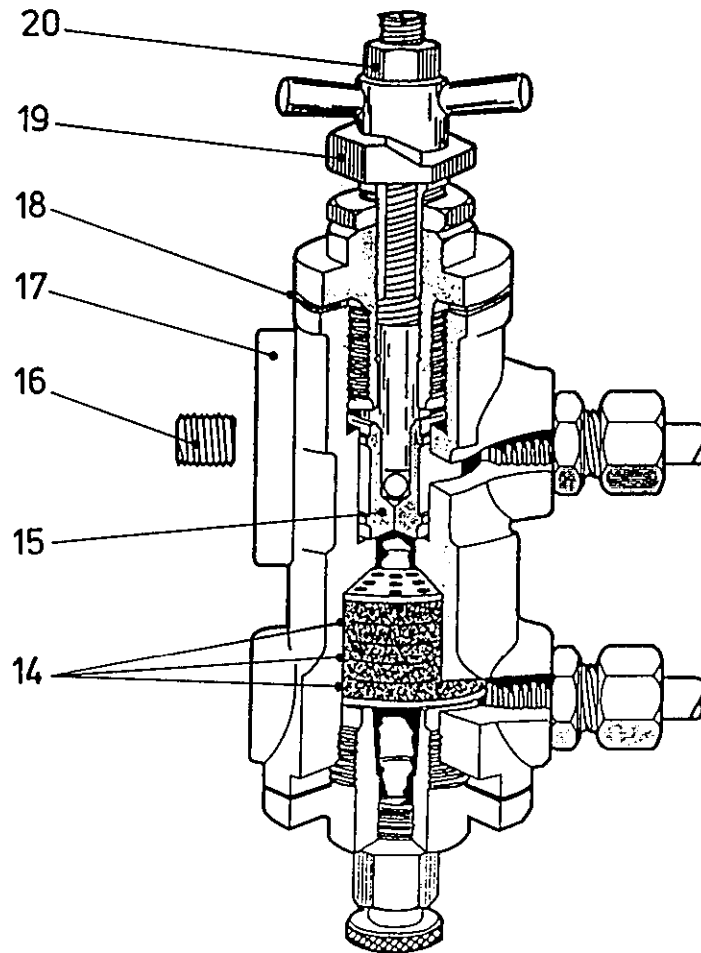
## GOVERNOR



Ref. No.	Part No.	Qty	Description
1	C3938B/SU1	1	Governor (1-2 bar)
1	C3938B/SU2	1	Governor (2-3 bar)
1	C3938B/SU3	1	Governor (3-7 bar)
1	C3938B/SU4	1	Governor (7-10 bar)
2	C3467/8	1	Wingnut Spring Rod
3	C2324/5	1	Spring (1-2 bar)
3	C3467/29	1	Spring (2-3 bar)
3	C3467/2	1	Spring (3-7 bar)
3	C3467/24	1	Spring (7-10 bar)
4	C3467/7	1	Nut
5	C3467/18	1	Seat
6	C3467/30	1	Rod
7	A3767/9	1	Ball
8	A10327/35	1	Connection
9	A10327/43	1	Connection
10	C3938/3	2	Plate
11	C3938/2	1	Cap
12	CB7622	1	Cock, Drain
13	C3938/5	1	Washer

# B5

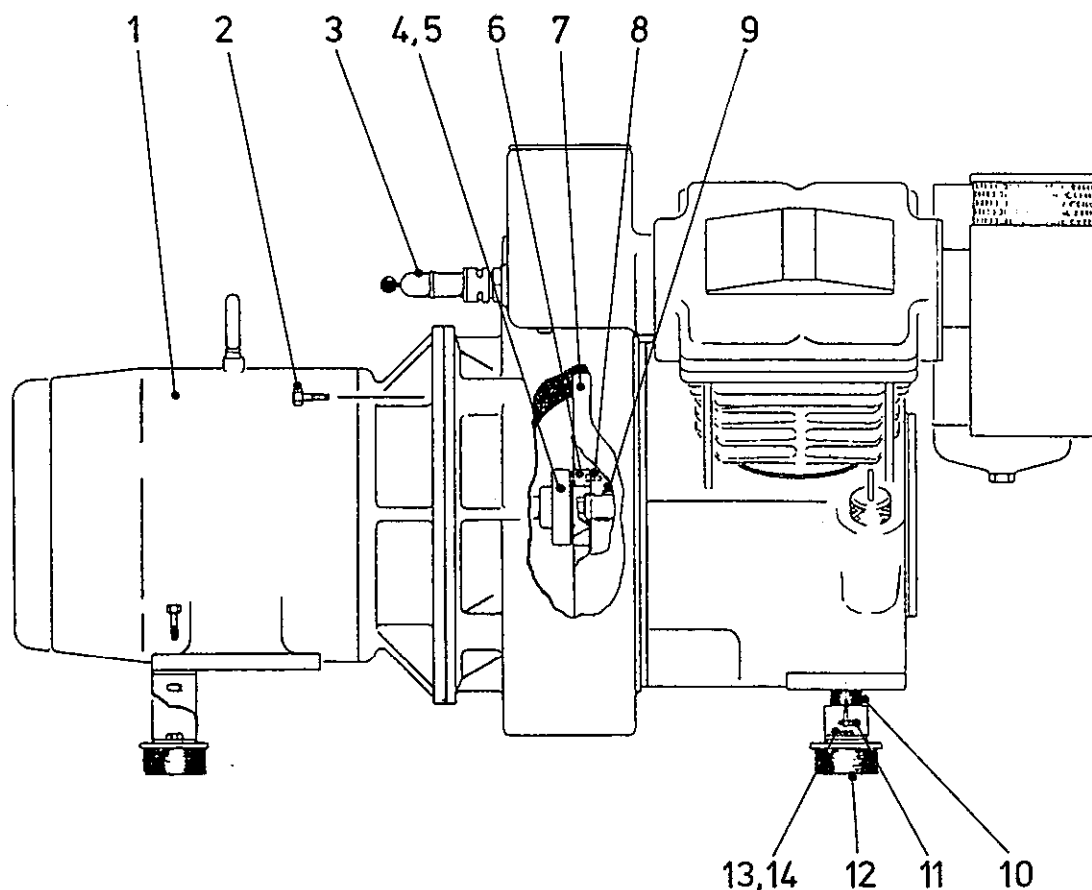
## GOVERNOR



Ref. No.	Part No.	Qty	Description
14	C3938/4	5	Pad
15	C3467/19A	1	Valve
16	A645/7	1	Screw
17	C3938/1	1	Body, Governor
18	C3467/9A	As Req'd	Shim (0.8 mm)
18	C3467/9B	As Req'd	Shim (0.4 mm)
18	C3467/9C	As Req'd	Shim (0.26 mm)
18	C3467/9D	As Req'd	Shim (0.08 mm)
18	C3467/9E	As Req'd	Shim (0.13 mm)
18	C3467/9F	As Req'd	Shim (0.10 mm)
18	C3467/9G	As Req'd	Shim (0.16 mm)
19	C3467/5	1	Screw
20	A4324/2	1	Nut

# B6

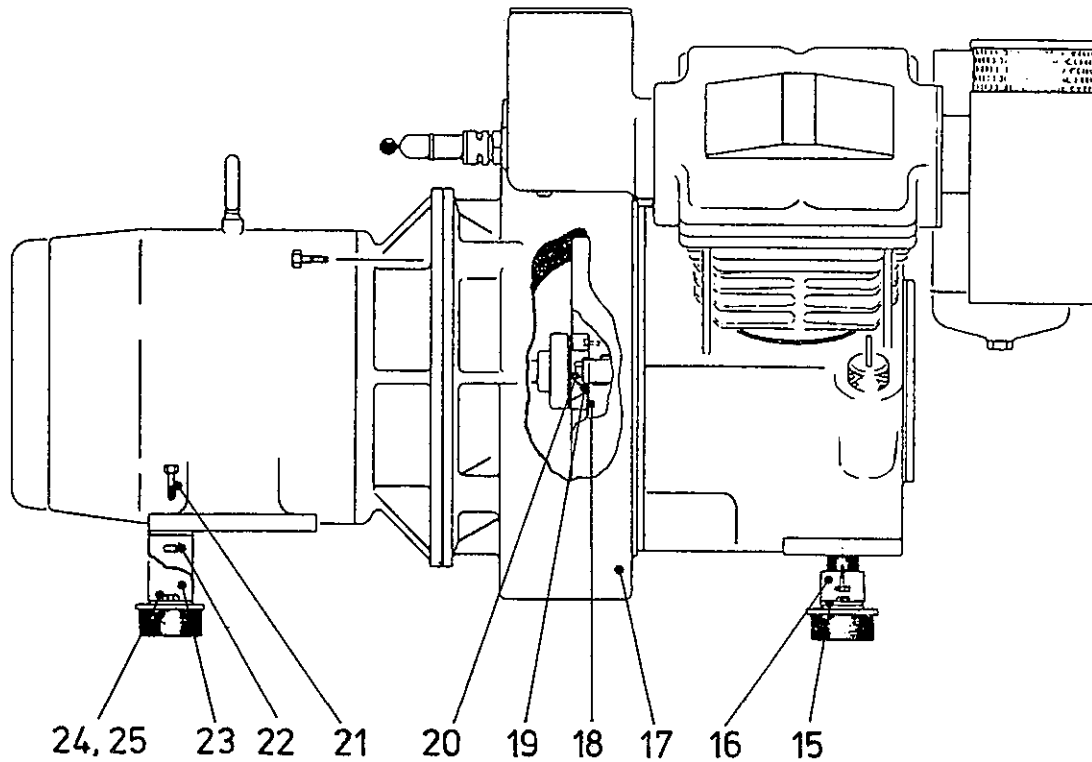
## FLANGE MOUNTED UNIT



Ref. No.	Part No.	Qty	Description
1	C20043/301	1	Motor and Key - 15HP 415V
1	C20043/321	1	Motor and Key - 20HP 415V
1	C20043/303	1	Motor and Key - 15HP 380V
1	C20043/323	1	Motor and Key - 2HP 380V
1	C20043/318	1	Motor and Key - 12 kW 415V
1	C20043/319	1	Motor and Key - 12 kW 380V
2	95000/345	4	Screw
3	A1461/34	1	Valve, Relief (3 bar)
4	C11359/176	1	Coupling (Inc. Ref. No. 5)
5	C1158/5342	6	Inserts, Rubber
6	C11359/128	1	Ring, Coupling
7	C11400/90	1	Flywheel
8	95023/230	6	Screw
9	A3770/20	1	Key
10	C11400/32	1	Spacer
11	95000/314	2	Screw
12	A10300/41	3	Mounting, Flexible
13	95000/284	2	Screw
14	95111/6	2	Nut

# B7

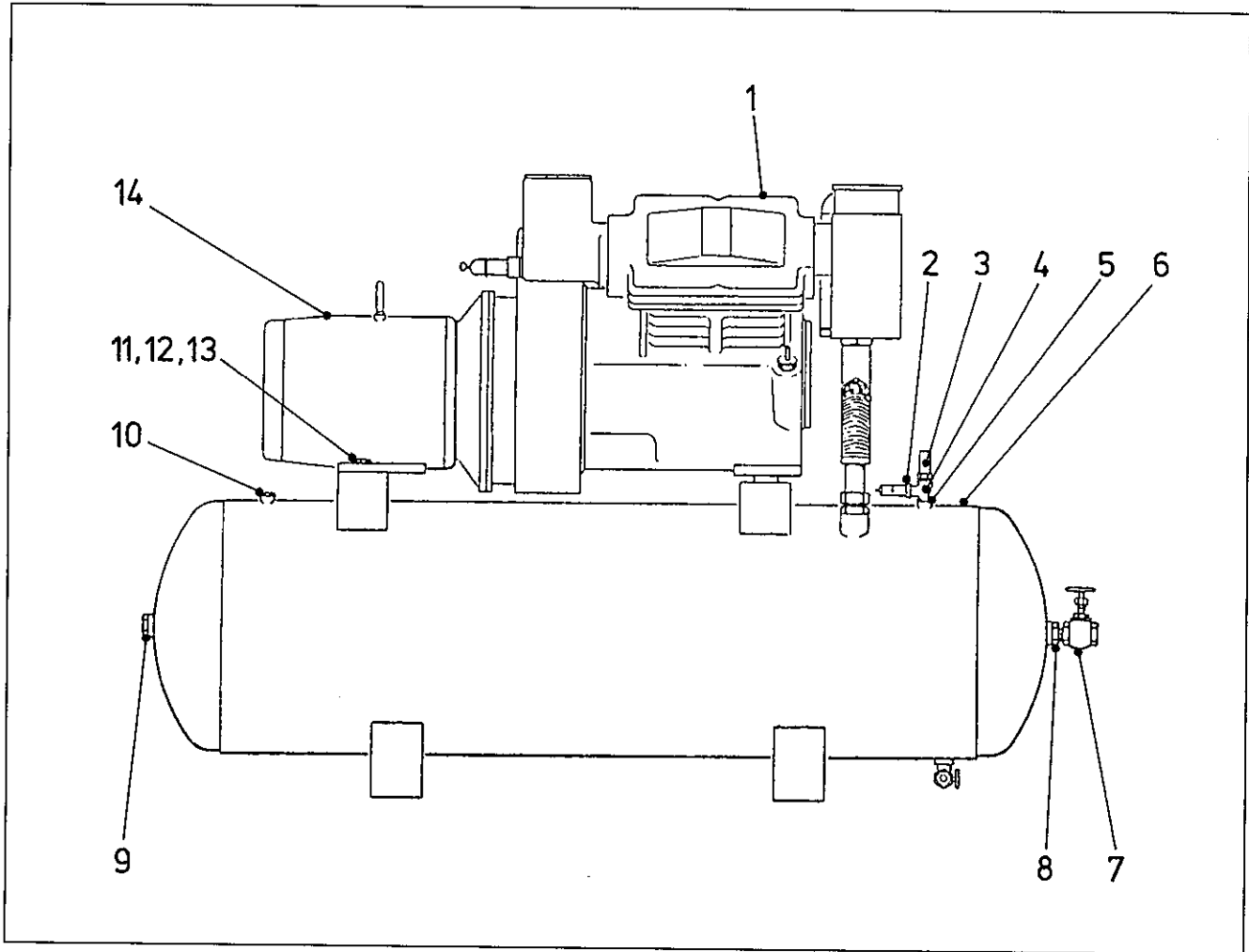
## FLANGE MOUNTED UNIT



Ref. No.	Part No.	Qty	Description
15	C11400/31	1	Bracket, Mounting
16	C11400/13	1	Bracket, Support
17	C11400/16	1	Housing, Flywheel
18	C11400/61	1	Plate, Keep
19	C11400/62	1	Washer, Tab
20	95000/315	1	Screw
21	95006/198	2	Bolt, Head
22	95111/7	2	Nut
23	A1461/35	1	Bracket
24	95000/283	1	Screw
25	95111/6	1	Nut
<b>Non-Illustrated Parts</b>			
	C4074/27	1	Plate, Specification
	A1401/20	1	Nameplate
	A1441/8	8	Screw
	95000/315	4	Screw (Ref. No. 17)
	95405/861	1	Bush

# B8

## RECEIVER MOUNTED UNIT

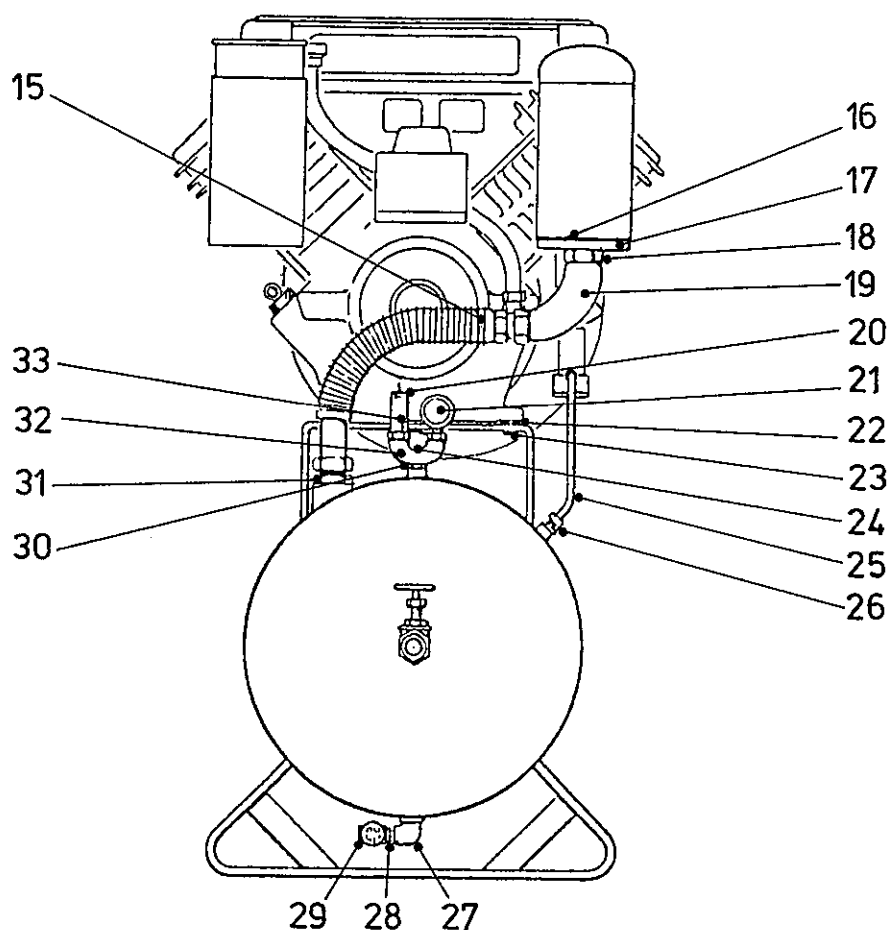


Ref. No.	Part No.	Qty	Description
1	C11400B	1	Compressor
2	A1461/53/155	1	Valve, Relief
3	CB1632/3	1	Gauge, Air Pressure
4	95405/350	1	Tee
5	95405/816	1	Nipple
6	C20090/2	1	Receiver
7	A10245/10	1	Valve
8	95405/802	1	Nipple
9	95405/948	1	Plug
10	A1451/3	1	Plug, Fusible
11	95148/16	4	Washer
12	95111/7	4	Nut
13	95006/199	4	Bolt
14	C20043/301	1	Motor and Key - 15HP 415V
14	C20043/321	1	Motor and Key - 20HP 415V
14	C20043/303	1	Motor and Key - 15 HP380V
14	C20043/323	1	Motor and Key - 20 HP380V
14	C20043/318	1	Motor and Key - 12 kW 415V
14	C20043/319	1	Motor and Key - 12 kW 380V



# B9

## RECEIVER MOUNTED UNIT



Ref. No.	Part No.	Qty	Description
15	C20090/4	1	Pipe
16	C3641/12	1	Joint
17	A3801/48	1	Flange, Delivery
18	95405/875	1	Bush
19	C11405/4	1	Elbow
20	A1461/6/155	1	Valve, Relief (10·8 bar)
20	A1461/6/105	1	Valve, Relief (7·3 bar)
21	CB1632/5	1	Gauge, Air Pressure (7bar)
22	C11400/32	2	Spacer
23	95006/198	2	Bolt
24	95405/945	1	Plug
25	C11353/177	1	Pipe
26	A10327/36	1	Coupling
27	95405/53	1	Elbow
28	95405/798	1	Nipple
29	A10245/3	1	Valve
30	95405/8	1	Nipple
31	C11405/3	1	Coupling
32	CB1516/50	1	Fitting, Branch
33	95405/854	1	Bush - Branch Port